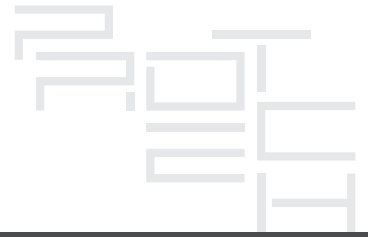




Company Profile

Laboratory Furniture & Fume Extraction Systems
Cleanroom Furniture
Medical Casework & Healthcare Solutions
Lockers & Benches
Toilet Partitions & Vanity Tops
Technical Furniture & Phenolic HPL Solutions



ABOUT US

Protech Company is a family owned and managed business that was established in 1993 with the aim of fulfilling the growing needs of laboratory furniture in the region. Today, as a major player in manufacturing technical and specialized furniture solutions, we strive to meet our customers' needs and exceed them by providing the highest quality standards, unmatched support and commitment for continuous development.

VISION

Become the leading manufacturer of sustainable specialized furniture while being the most valued business partner for our clients.

MISSION

Develop, design, manufacture and install specialized technical furniture solutions that fulfill each client's unique needs and enable them to focus on what they do best.

CAPABILITIES

| | | |
|--|--|--|
| | | |
| | | |

CERTIFICATES, MEMBERSHIPS & AWARDS



ISO 9001



EN standards



ASHRAE standards



Scientific Equipment & Furniture Association (SEFA) - USA

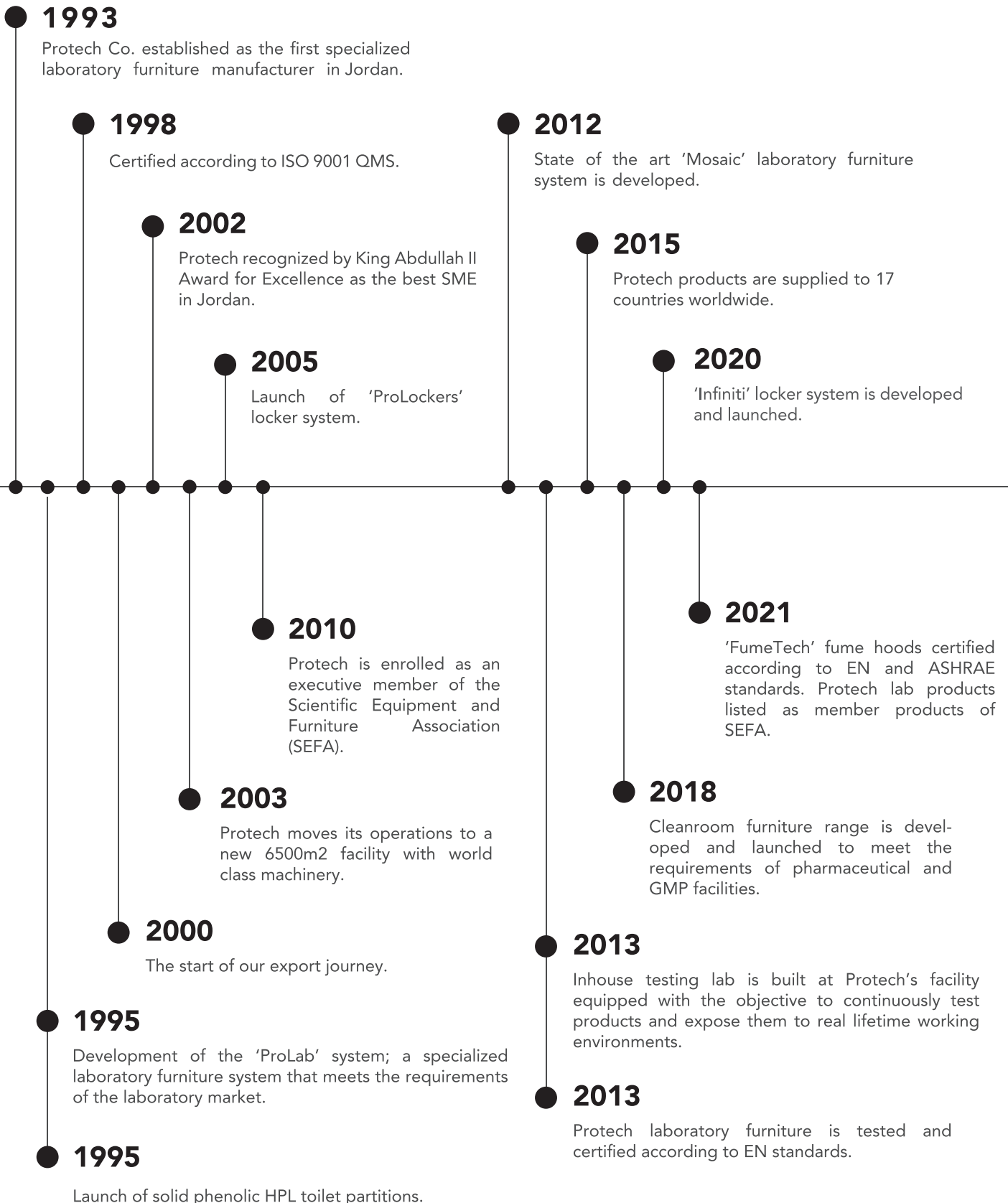
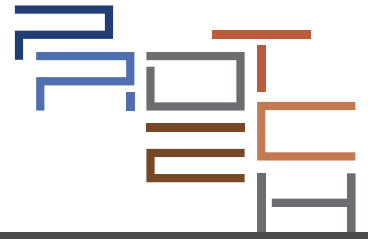


Furniture Industry Research Association (FIRA) – UK



King Abdullah II Award for Excellence

MILESTONES



LABORATORY FURNITURE & FUME EXTRACTION SYSTEMS



At the core of Protech's operation is the design, manufacture and installation of world class laboratory furniture and fume hoods. Protech lab furniture is tested and certified according to EN standards and has been supplied to the most demanding labs in the region throughout the past three decades. To complete our laboratory furniture solutions, Protech manufactures certified fume hood devices according to EN and ASHRAE standards aimed to meet the requirements of modern labs while emphasizing efficiency and safety.

PRODUCTS

- Benches & Tables
- Laboratory Casework & Workstations
- Weighing Tables & Enclosures
- Service Systems
- Safety Storage Cabinets
- Fume Hoods
- Canopy Hoods & Local Extractors
- Laboratory Seating
- Worktops, Service Fixtures & Accessories



FEATURES

- Safety
- Certified products
- Flexibility
- Lab grade materials



CLEANROOM FURNITURE

Our experience as a strategic partner of the pharmaceutical industry has enabled us to develop a holistic solution for cleanrooms with full compliance. Constructed using solid phenolic HPL panels and stainless steel hardware and fittings, we are able to design cleanroom furniture and storage solutions for every requirement while optimizing space and workflow in classified areas.

PRODUCTS

- Wardrobes & Lockers
- Shoe Lockers & Racks
- Interlock Cabinets
- Garment & Supplies Cabinets
- Stepmover Benches
- Garment Dispensers & Hampers
- SOP Stands
- Locking Systems & Master Access
- Customized Storage Units



FEATURES

- Antibacterial & easy to clean
- Improved workflow & productivity
- GMP compliant
- Designed to meet specific requirements



MEDICAL CASEWORK & HEALTHCARE SOLUTIONS



To meet the demanding requirements of the healthcare sector, Protech offers functional and durable healthcare solutions with the safety and comfort of both the patient and medical professionals in mind. Using easy to clean, antibacterial materials suitable for different departments in healthcare facilities and clinics.

PRODUCTS

- Modular Medical & Dental Casework
- Exam Rooms Casework
- Trolleys & Carts
- Patient Bedside Cabinets
- Pharmacy Furniture
- Nurse Stations



FEATURES

- Durability
- Hygienic materials
- Modular & flexible
- Designed for modern healthcare facilities



LOCKERS & BENCHES

Protech's lockers and benches made of solid phenolic HPL are highly durable and resistant, supplied in different models, configurations and options. Our lockers are designed and fabricated to stand the test of time in the most demanding areas. Offered in a wide range of colors and a comprehensive choice of secure locks, it is the ideal solution for any locker room.

PRODUCTS

- Changing Room Lockers
- Student Lockers
- Staff Lockers
- Sports Team Lockers
- Changing Room Benches
- Guest Lockers for Classified Facilities
- Electronics Charging Lockers
- Public Places Lockers
- Cubbies
- Locking Systems & Master Access



- ### FEATURES
- User & Management convenience
 - Durability
 - Water, scratch & impact resistance
 - Wide range of colors



TOILET PARTITIONS & VANITY TOPS

Protech's toilet, shower and changing room partition systems are the optimal solution for demanding public facilities. Using the best solid phenolic HPL panels and stainless steel fittings we have built a solid system that has been tried and perfected. Our partitions system is complimented with vanity tops that offer a unified design and maintain the best performance.

PRODUCTS

- Toilet, Shower & Changing Room Partitions
- Kids & Preschool Partitions
- Urinal Privacy Screens
- Vanity Tops
- Integrated Changing Benches
- Baby Changing Stations
- Integrated Access Panels & Service Cabinets



FEATURES

- Engineered for heavy use
- Easy to clean materials
- Space utilization
- Wide range of colors



TECHNICAL FURNITURE & PHENOLIC HPL SOLUTIONS



As a pioneer in the fabrication of solid phenolic HPL material, Protech has developed into one of the world innovators in its diverse applications. Our expertise combined with the flexibility of our material, allows us to develop solutions to meet the requirements of most demanding environments and specialized applications. With Protech's solid phenolic HPL technical furniture and solutions, endless possibilities are available to move your business forward.

PRODUCTS

- Command & Control Rooms Furniture
- Industrial & ESD Workstations
- Food Court & Public Areas Furniture
- Special Storage Solutions
- Charging Stations
- Waste Receptacles & Recycling Stations
- OEM Furniture

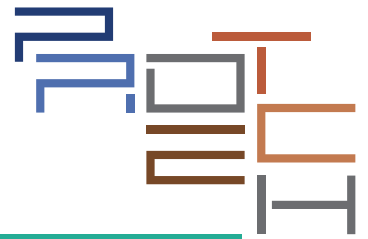


FEATURES

- Custom solutions
- Engineered solutions
- Efficiency
- Maintenance free



30 years **experience.**
 More than 1000 projects
successfully executed in 17 countries.

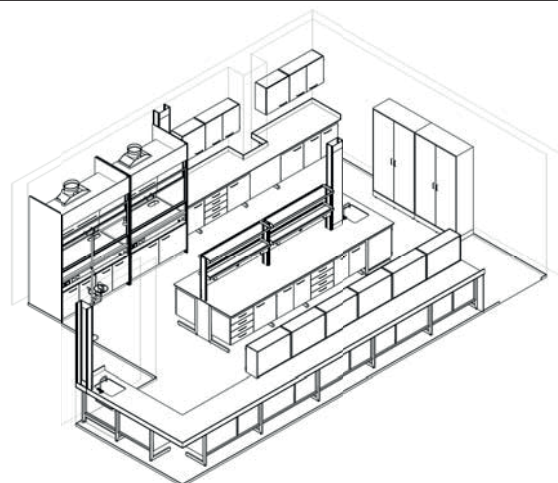
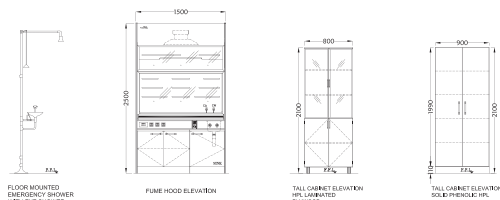
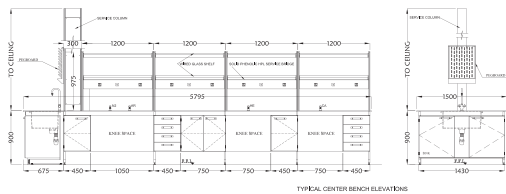
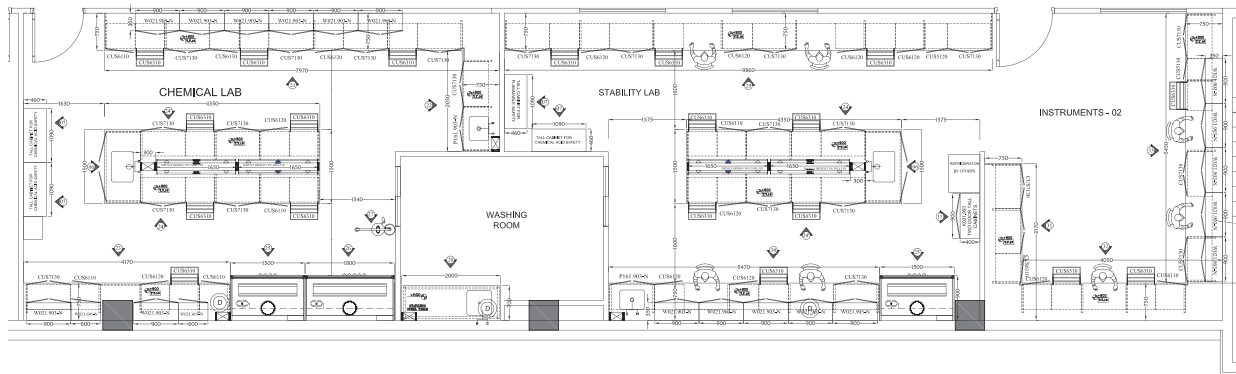
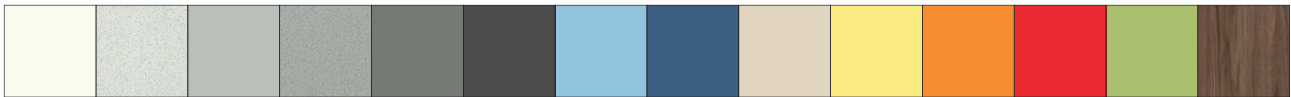


INDUSTRY PARTNERS

- Architects, Designers & Consultants
- Food, Pharmaceutical & Chemical Industries
- Healthcare
- Education
- Retail, Commercial & Public Facilities
- Public Administration & Security
- Hotels & Tourism Sector
- Sports & Recreation

COUNTRIES

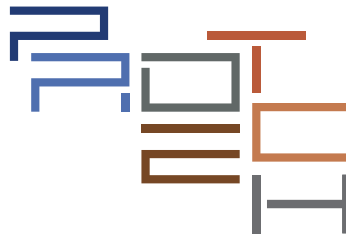
- Jordan
- Palestine
- Syria
- Lebanon
- Iraq
- Yemen
- Saudi Arabia
- United Arab Emirates
- Qatar
- Oman
- Kuwait
- Bahrain
- Egypt
- Sudan
- Algeria
- Libya
- Malta





Solutions that move
your business forward.





Protech Company شركة التقنية المتقدمة (بروتك)

No. 302, King Abdullah II Industrial Estate, Sahab
Amman, Jordan

+962 6 402 5470

info@protech.jo

www.protech.jo

linkedin.com/company/protechco/

