



www.zemleypharma.com
www.nbzhengli.com



info@zemleypharma.com



Global Leader in **Pharmaceutical Packaging** and Drug Delivery Solutions

Ningbo Zhengli Pharmaceutical Packaging Co., Ltd



Zhengli Headquarter & facility A

No. 38 Hongsheng Road, Jiangbei Hongtang Industrial A,
Ningbo, China 315033
Tel: +86-574-8309 6607



Zhengli facility B

No. 1200, Longci Road, Jiangbei High-Tech Industrial
Park, Ningbo, China



Zhengli India

Marol Naka Andheri East. Mumbai, India



Zhengli Thailand

8/111 Nawamin 85, Yaek 2-5, Nawamin Buengkum,
Bangkok 10240, Thailand



Zhengli Malaysia

3 Jalan Nirwana 35 68000 Ampang Selangor, Malaysia
Tel: +60 3-9282 9527



Zhengli Russia

433405, Россия, Ульяновская область, Чердаклинский
район, Портовая особая экономическая зона, проезд
Индустриальный, д. 12, стр. 1, этаж 1, помещ. 132



Zhengli Turkey

Büyükdere Cad. No:26 K:4 D:8
34394 Fulya - Sisli, 34394 istanbul, Turkey



Zhengli Morocco

Hay Souaret, Ibn Tachfin, Ain Borja, Casablanca, Morocco
Tel:+212 622 413891



Zhengli Europe

Via Don Luigi Guanella, 1E 40141 Bologna-Italy
Tel: +39 051 4086204

www.zemleypharma.com

ZHENGLI GROUP

Empowering Health,
Enriching Lives

*"Make sure the packaging remains
the ultimate safeguard for the
medication."*

— CEO Ye Huan

PRODUCT SECTION

05
VIALS

09
PREFILLABLE SYRINGES

13
POLYMER PRODUCTS

15
CARTRIDGES

17
AMPOULES

19
READY TO USE

21
AUTO INJECTION PENS

23
OVERVIEW

25
LABORATORY

ABOUT US

Global Leader in
Pharmaceutical Packaging and Drug Delivery Solutions

Ningbo Zhengli Pharmaceutical Packaging Co., Ltd.

Located in Ningbo, Zhengli Pharmaceutical Packaging was founded in 1991, our core focus is to provide pharmaceutical packaging and drug delivery system solutions for pharmaceutical companies.

We maintain top-notch quality standards through strict adherence to **GMP** standards. Our advanced facilities span over **120,000 m²**, featuring state-of-the-art production units, with **D, C, A level clean rooms** and a leading domestic lab center.

This dedication fuels an annual production capacity exceeding **2.5 billion**.

As a leader in pharmaceutical packaging, Zhengli pioneers research in innovative materials and precision drug delivery systems. We provide top-quality pharmaceutical solutions such as **Vials, Cartridges, Prefillable syringes, Ampoules, and Injection pens**, and also products like **Polymer based (COP/COC) items**. These cater to various sectors including **vaccines, biological drugs, cells and gene therapy, medical and aesthetic injections**, etc.

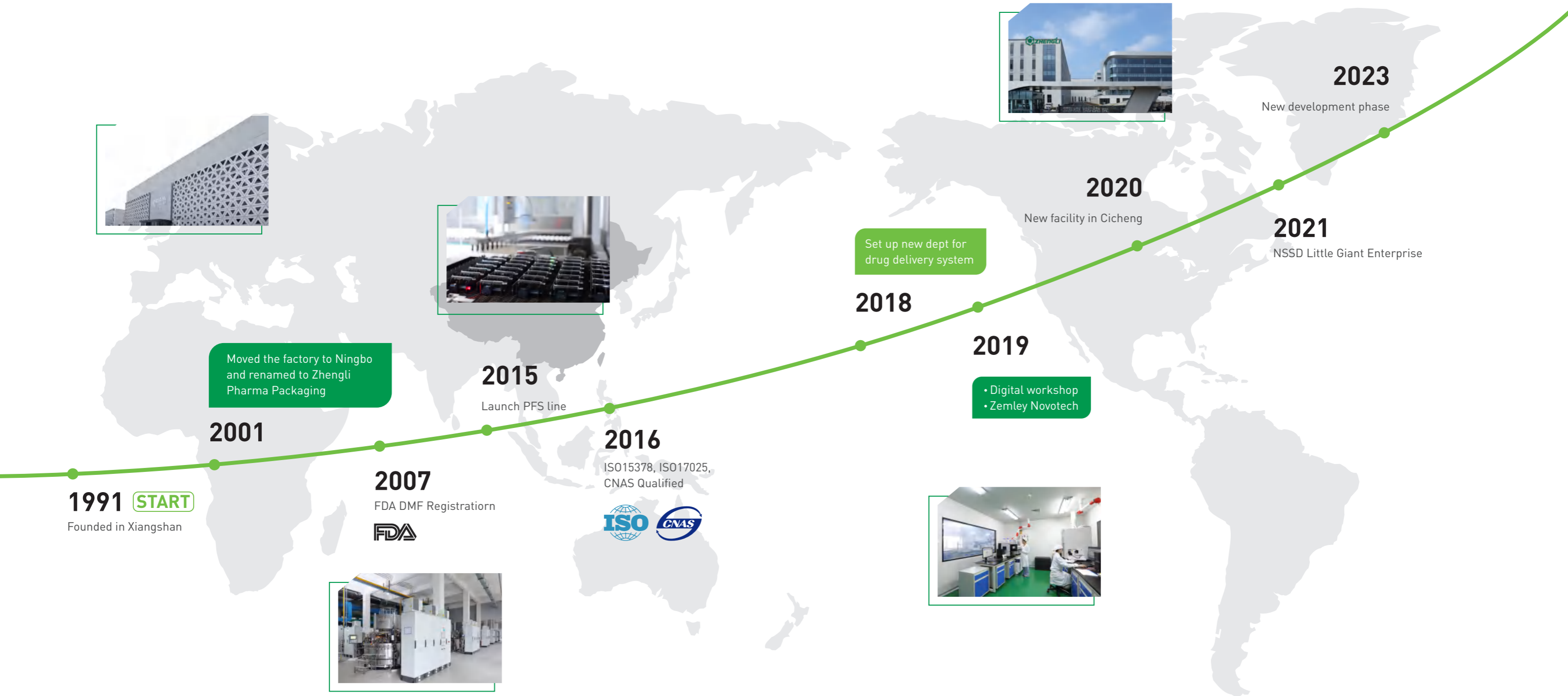
120,000 m² **2.5 billion**
GMP standard plant Annual production capacity

30+ Years
Glass experience



MILESTONE

ZHENGLI GROUP



Global Leader in **Pharmaceutical Packaging**
and Drug Delivery Solutions

VIALS

Vials are the main product of Zhengli.

Compliant with **ISO standards** and **YBB**, these vials exhibit excellent physical and chemical properties, making them the top choice for packaging pharmaceuticals.

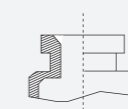
We also accept customized sizes.

Information

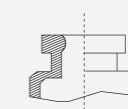
- ✔ Range between 2R - 50R
- ✔ Available in clear and amber using glass types I
- ✔ Vials with different Blowback EBB, ABB or NBB
- ✔ Enhanced quality in the labeling process for optimal results
- ✔ Exceptional resistance to high thermal shocks
- ✔ DMF document available upon request

Applications

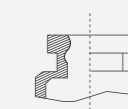
- ✔ Vaccines
- ✔ Biologics
- ✔ Antibiotics
- ✔ Antitumors
- ✔ Genetics
- ✔ Medical aesthetics, etc.



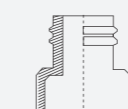
No Blowback



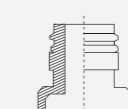
European Blowback



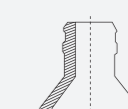
American Blowback



Screw Neck



Pilfer Proof



Snap-On

Characteristics



Granule water resistance



Internal stress $\leq 40\text{nm/mm}$



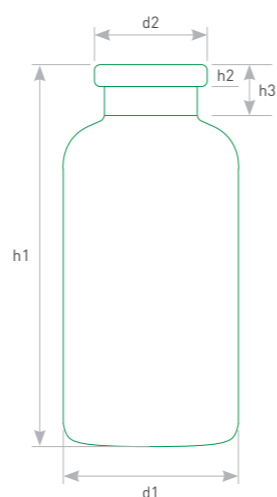
Water resistance of inner surface



Various specifications are available and can be customized

Parameters

Size \ Spec	Brimful Capacity ml	d1	d2 +0.2-0.3	d4 ±0.2	h1	s1
2R	4±0.5	16±0.15	13	7	35±0.5	1±0.04
4R	6±0.5	16±0.15	13	7	45±0.5	1±0.04
6R	10±0.5	22±0.2	20	12.6	40±0.5	1±0.04
8R	11.5±0.5	22±0.2	20	12.6	45±0.5	1±0.04
10R	13.5±1	24±0.2	20	12.6	45±0.5	1±0.04
15R	19±1	24±0.2	20	12.6	60±0.5	1±0.04
20R	26±1.5	30±0.25	20	12.6	55±0.7	1.2±0.05
25R	32.5±1.5	30±0.25	20	12.6	65±0.7	1.2±0.05
30R	37.5±1.5	30±0.25	20	12.6	75±0.7	1.2±0.05
50R	62±4	40±0.4	20	12.6	7±0.75	1.5±0.07



Stoppers

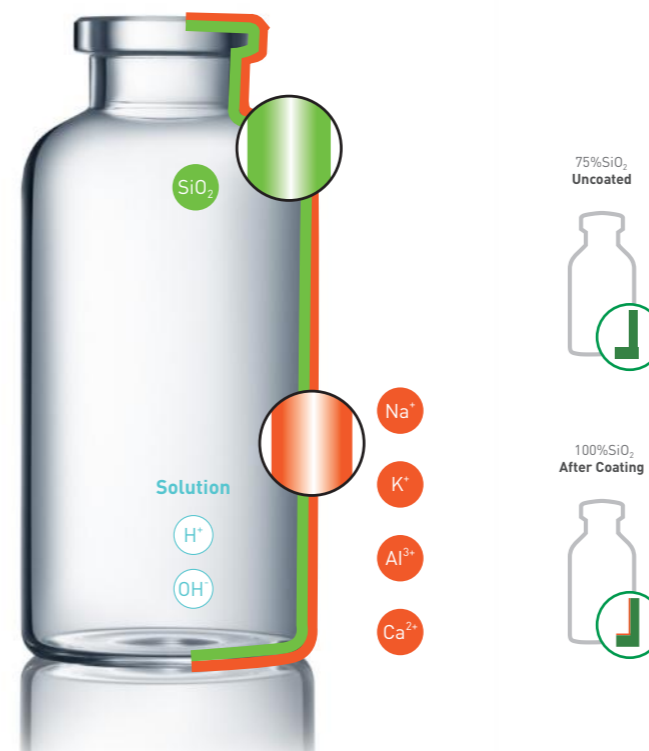
Supplier	Formulation	Material	Size
Datwyler	FM257	BIIR	13/20mm
	FM457	BIIR	
	FM460	BIIR	
	FM140	CIIR	
	FM701	CIIR	
West	2116		
	4432	BIIR	
	4023		
Local	TBC*	CIIR/BIIR	



CUSTOMIZATIONS

Inorganic Siliconized

✓ Zhengli implements cutting-edge machinery to achieve precise silicon dosage and uniform distribution of silicon oil, ensuring optimal drug-container compatibility.



Siliconization

✓ Zhengli offers premium siliconized packaging, enhancing glass durability and maximizing product value or delicate pharmaceutical needs.

Frosted Glass

✓ The surface of containers can be frosted and colored at the same time according to customers requirements, to make it suitable for holding cosmetic and special drug.



Silkscreen & Laser Print

✓ High quality laser marking machines to implement graduation.

PREFILLABLE SYRINGES

These pre-fillable syringes **enhance convenience, accuracy, and reduce the risk of dosage errors, and reduce waste.**

We also accept customized sizes.



Information

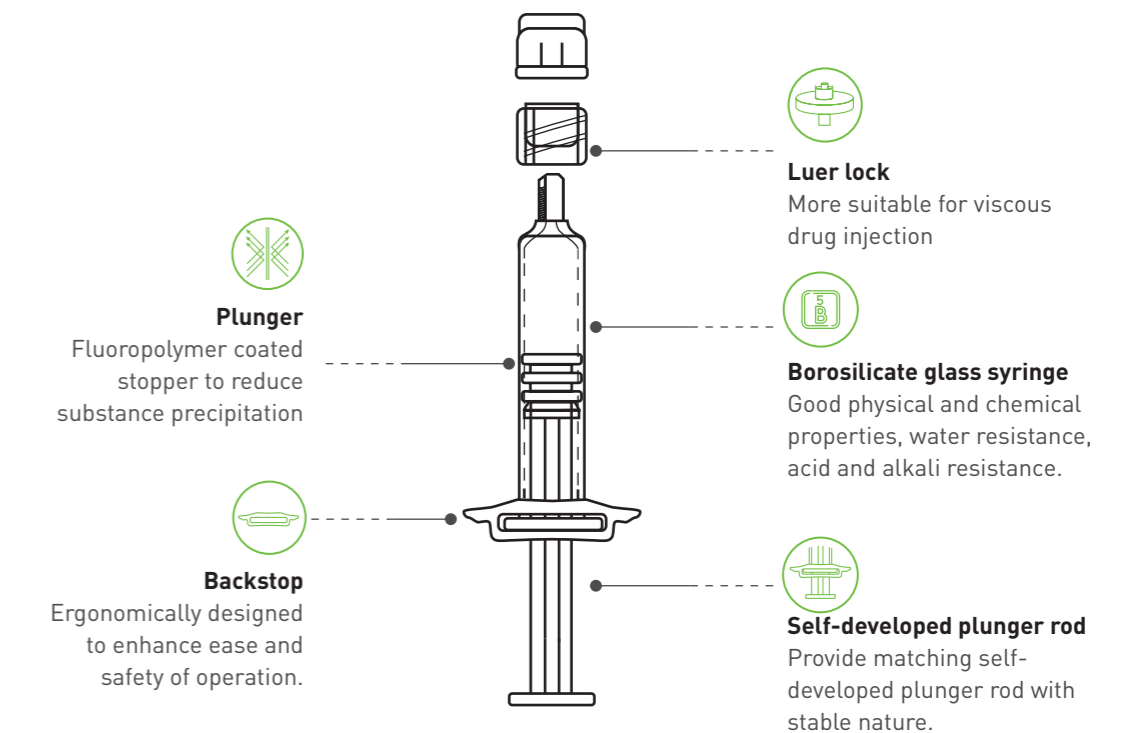
- ✔ Range from 0.5ml - 3ml
- ✔ Ready to use format
- ✔ Glass Type I
- ✔ Syringes can be provided as a complete system with plunger stopper, plunger rod, and backstop
- ✔ Syringe type: With Needle, With Luer lock, With Luer cone
- ✔ Needle Dia: 25G, 27G, 29G
- ✔ Bevel: 3 Bevel, 5 Bevel
- ✔ Sterilized: ETO sterilization
- ✔ DMF document available upon request

Applications

- ✔ Vaccines
- ✔ Biologics
- ✔ Oncology
- ✔ Anticoagulation
- ✔ Emergency drugs
- ✔ Medical aesthetics, etc.



Characteristics

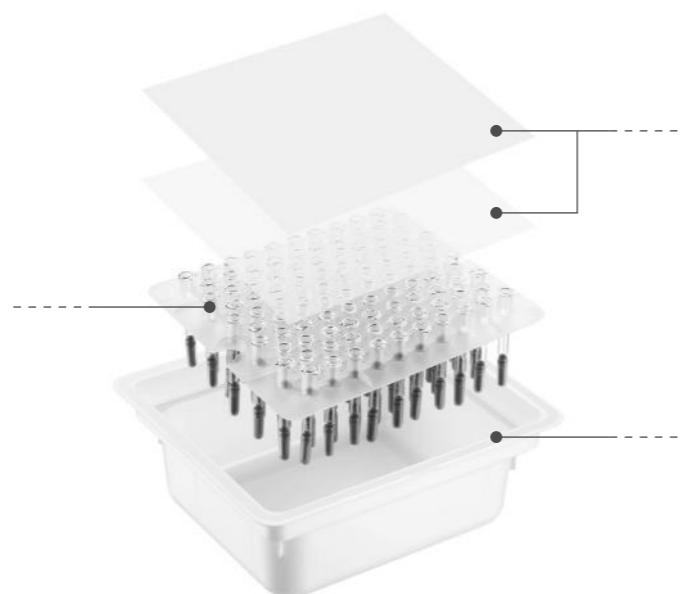


Specification	Diameter	Stacked Needle	Luer Cone	Luer Lock
		Rigid Needle Shield	Tip Cap	Plastic Rigid Tip Cap
0.5ml	6.85mm	✓	✓	✓
1ml Long	8.15mm	✓	✓	✓
1ml	10.85mm	✓	✓	✓
1.5ml	10.85mm	✓	✓	✓
2.25ml	10.85mm	✓	✓	✓
3ml	10.85mm	✓	✓	✓

Packaging

Easy Filling Antimicrobial Ventilation Aseptic Delivery Direct Filling Reduced Costs Versatile and Flexible

Ready-to-use components that meet regulatory standards for a comprehensive container solution, eliminating additional processing steps.



Ethylene Oxide (ETO) sterilized, double-layered Tyvek™ for dust containment and sealing, with a breathable bag for bacteria control and breathability.

Vials, Cartridges and Pre-fillable syringes are available in nested and tray packages.



Suitable for direct use in pharmaceutical companies and research institutions.

Formulations

✓ With/Without Needle/ Luer Lock

Supplier	Formulation	Material
Datwyler	FM257	BIIR
	FM457	BIIR
	FM460	BIIR
	FM140	CIIR
	FM701	CIIR
West	2116	BIIR
	4432	
	4023	
	7028	
Local	TBC*	CIIR/BIIR

TBC: To Be Confirmed

Plungers

Supplier	Formulation	Material
Datwyler	FM257	BIIR
	FM457	BIIR
	FM460	BIIR
	FM140	CIIR
	FM701	CIIR
West	2116	BIIR
	4432	
	4023	
Local	TBC*	CIIR/BIIR

TBC: To Be Confirmed

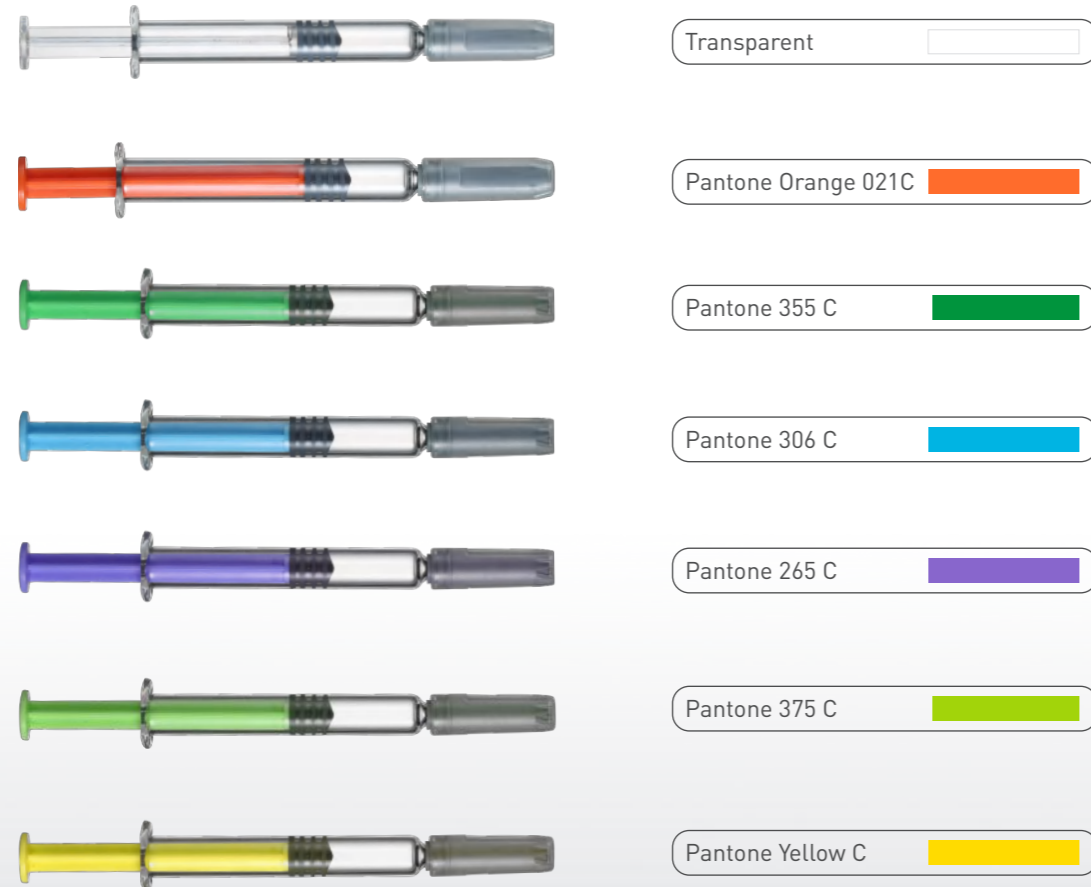
Backstops

✓ Backstop ensures reliability, building client confidence by guaranteeing service even in unexpected situations. It's a fail-safe for commitments, demonstrating dedication to client needs.



AVAILABLE PLUNGER ROD COLOURS

✔ Our product range includes an extensive variety of plunger sourced from top-tier providers such as Datwyler, and West, also from Chinese local producer. We provide diverse options in terms of size, material, and quality, available either as 'ready-to-use'. Tailored to meet specific customer needs.



POLYMER PRODUCTS

Our recent addition to our existing product line offers customers the widest selection of Pre-Fillable Syringes (PFS), and Vials, as it is offered in **COP** (Cyclic Olefin Polymer) and **COC** (Cyclic Olefin Copolymer) materials.

COP

✔ Made from high-performance Cyclic Olefin Polymer, COP PFS, vials ensures the integrity and safety of sensitive drug formulations with excellent chemical resistance and minimal extractables.

COC

✔ COC PFS blend COP advantages with polyolefins, offering superior strength and clarity for various pharmaceutical uses.

Applications

Polymer Syringe

- ✔ Medical and healthcare
- ✔ Laboratory and research
- ✔ Cosmetics and beauty
- ✔ Veterinary medicine

Polymer Vial

- ✔ Pharmaceuticals
- ✔ Biotechnology and life sciences
- ✔ Chemicals and reagents
- ✔ Food and beverages



CARTRIDGES

Precision in medication delivery. These specialized containers, **made of neutral borosilicate glass**, are designed to **accurately** and **safely deliver** a specific dosage of medication.

We also accept customized sizes.

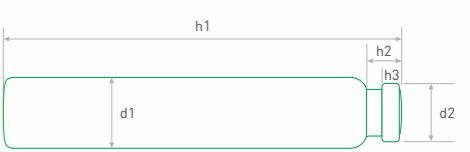
Information

- ✓ Range between 1.5ml, 1.8ml, and 3ml.
- ✓ Glass Type I
- ✓ State-of-the-art production technologies
- ✓ 100% in-line camera monitoring
- ✓ DMF document available upon request

Applications

- ✓ Insulin
- ✓ Growth hormone
- ✓ GLP-1
- ✓ Anesthesia, etc.

Format.	h1	h2	h3	d1	d2
1.5ml	57.0±0.2	5.0±0.2	2.9±0.1	8.65±0.1	7.15±0.2
1.8ml	62.0±0.4	5.0±0.2	2.9±0.1	8.65±0.1	7.15±0.2
3ml	62.3±0.4	5.0±0.2	2.9±0.1	11.6±0.15	7.15±0.2







CombiSeals

Supplier	Formulation	Material
Datwyler	FM257 + H1-7-207	BIIR
	FM457 + H1-7-207	BIIR
	FM460	BIIR
	FM140	CIIR
	FM701	CIIR
West	2116	
	PH701	BIIR
	4432	
	4023	
Local	TBC*	CIIR/BIIR



Characteristics



-  100% in-line camera inspection
-  Stable forming process with minimal product geometric tolerance
-  Strict temperature control technology enhances mechanical strength and ensures safe and convenient use
-  Compatible with a variety of injection equipment, matching the flexible application needs of pharmaceutical companies



AMPOULES

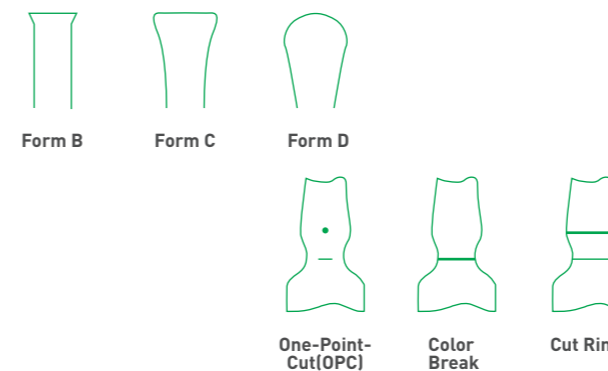
Zhengli introduces foreign high-end equipment to ensure the smooth breaking surface of the ampoule to a greater extent, making it simple and safe to open the ampoule, and bringing better product experience to users while reducing pollution.

Information

- ✓ ISO Form B, C and D, or as customer request
- ✓ Range from 1ml - 30ml
- ✓ Glass Type I
- ✓ Design: OPC (One Point Cut), CBR (Color Break Ring) and SCR (Score Ring) forces
- ✓ Color Ring: Up to three colored coded identification rings or customized ceramic Printing

Applications

- ✓ Pharmaceutical
- ✓ Personal care and cosmetics
- ✓ Drugs



Characteristics



100% in-line camera inspection



Excellent surface durability for long-lasting protection of pharmaceuticals



Introducing foreign high-end equipment to ensure smooth cross-section and make the bottle opening operation simple and safe



Reduce pollution while providing users with a better product experience

READY TO USE

We operate a **washing** and **drying** assembly line under pharmaceutical-grade clean conditions. This makes it apt for direct filling and utilization in pharmaceutical companies, research institutions, and labs.



Advantages

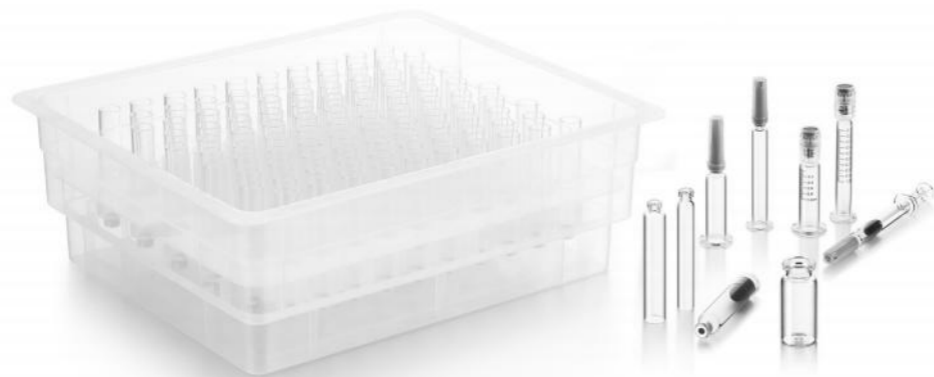
- ✔ Time saving and efficiency
- ✔ Minimal waste and environmental impact
- ✔ Ease of storage and inventory management
- ✔ Reduced risk of contamination

Available

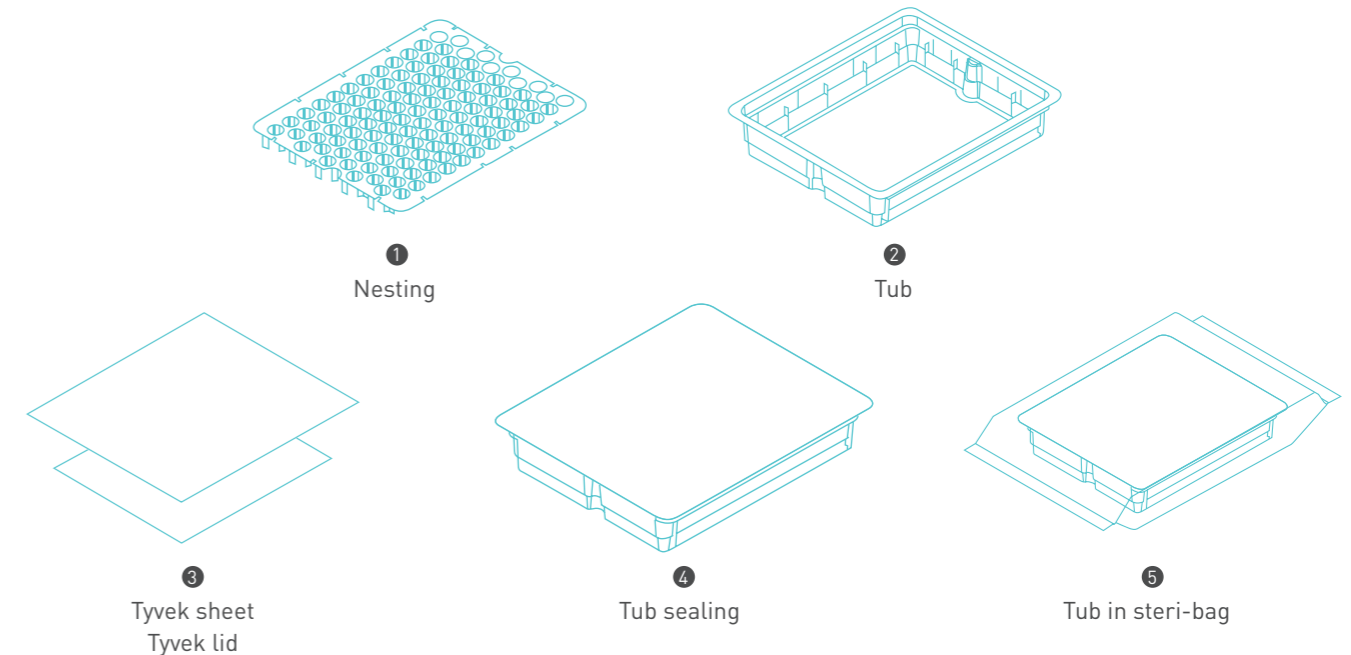
- ✔ Prefillable Syringes
- ✔ Vials
- ✔ Cartridges
- ✔ COP Syringes
- ✔ COP Vials

Applications

- ✔ Pharmaceutical
- ✔ Personal care and cosmetics
- ✔ Drugs



Packing



AUTO INJECTION PENS

Cartridge Injectors

An injector with cartridge ensures precise and controlled drug delivery using advanced mechanisms and high-quality materials.



PFS Injectors

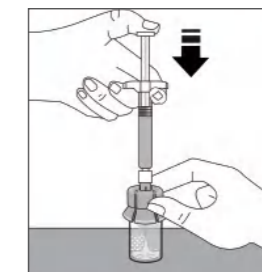
Combining an injector with prefillable, high-quality syringes ensures precise dosing, enhancing both patient experience and healthcare professional efficiency.



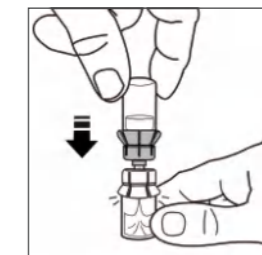
Adaptation container	1ml long, 2.25ml
Liquid filling quantity	0.2-2.25ml
pipe diameter	6.85ml
Liquid viscosity	≤ 25cP
Needle diameter	≥ 27G
Injection time	< 15s
Needle insertion and retraction	Automatic
Needle depth	6-8mm
End of injection feedback	hearing or vision

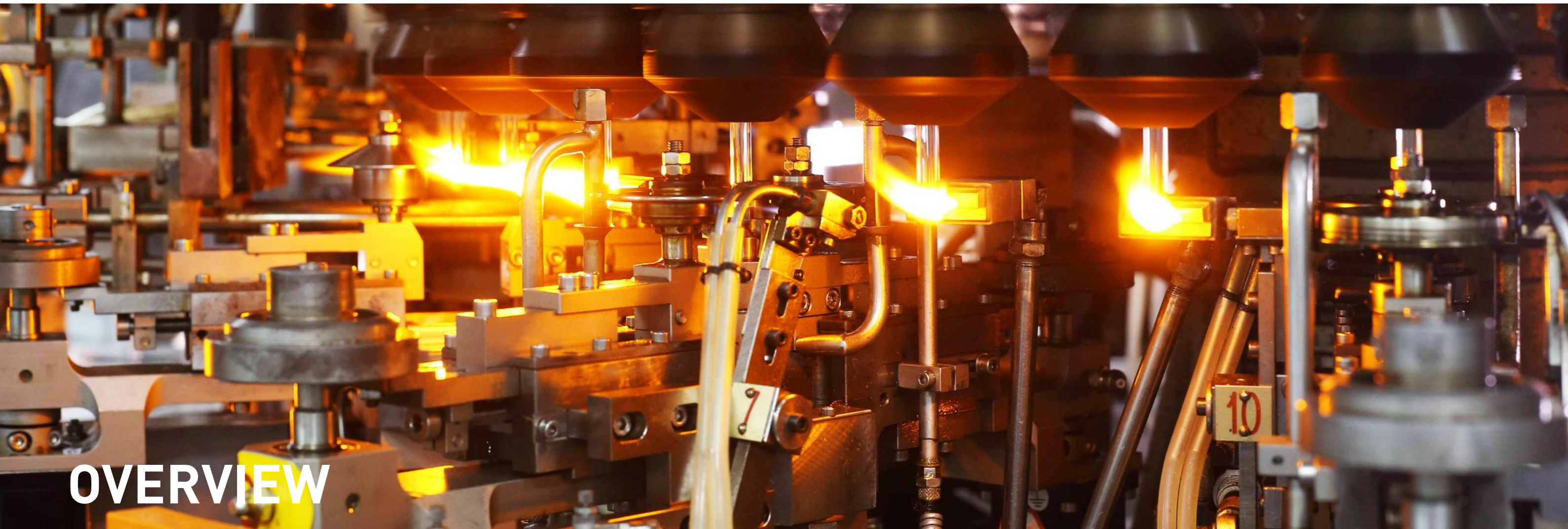
Vial Adapters

✓ **Vial Adapter** is a sterile, single-use medical device designed for non-invasive drug transfer and mixing from vials. It features an integral plastic spike at its center to puncture vial closures. Its packaging and cover ensure sterility and facilitate easy attachment to drug vials.



✓ **Transfer Device** is a one-time-use, sterile tool comprising two vial adapters joined via Luer ports following reconstitution, the drug can be prepared for administration by detaching the diluent vial and attaching a syringe to the female Luer port.





OVERVIEW

Features

- ✔ Controlled forming temperature for precision.
- ✔ High-res cameras ensure quality checks.
- ✔ Automatic adjustments during glass forming.
- ✔ Certified clean rooms in production.
- ✔ Advanced prewashing and strengthening.
- ✔ Detailed data recording for quality analysis.

Forming at Zhengli embodies precision through controlled and efficient processes.

Annealing ensures glass strength and resilience through carefully controlled heating and cooling processes.

All packaging process is done automatically in clean room.



LABORATORY

Our inhouse lab covers 300m², fully equipped with all the advanced machines to carry out qualified testing for products.

Features

- ✓ We construct testing rooms to ensure all **raw materials, in-process products, finished goods**, and the production environment meet rigorous **quality standards**. We conduct **regular, randomized** tests on **every batch** to uphold **quality assurance**.
- ✓ Reflective/transmissive B&D field metallurgical microscope



CERTIFICATES



ISO14001



ISO13485



ISO15378



ISO45001



CNAS

Our retention room is designed for secure storage of products over **five years**, emphasizing quality maintenance and efficient organization. It's a vital component of our long-term inventory strategy, ensuring safe and accessible product preservation.

