



# Laboratory automation made easy with the Z-Lab

Z-Lab is a series of bench-top semi-automatic modules, specifically engineered for lab/pilot scale production of syringes, cartridges, and vials. When used inside a cleanroom or Isolator, this compact technology allows for aseptic fill-finish of injectable parenteral preparations.

# Z-LAB

- ✓ 5 - 10 container/min
- ✓ Two button safe operation
- ✓ Siemens PLC control
- ✓ Filling range: 0.2-150ml
- ✓ All common filling technologies
- ✓ Vacuum filling/stopper setting
- ✓ Lab/pilot scale production
- ✓ Load cell option (100% IPC)
- ✓ Designed for isolators, o/cRABS

The Z-Lab is available in the three versions:

Z-Lab Fill – filling using rotary piston, peristaltic or viscotec pump technology

Z-Lab Close – vacuum stopper setting for syringes and cartridges

Z-Lab Crimp – crimping of vials

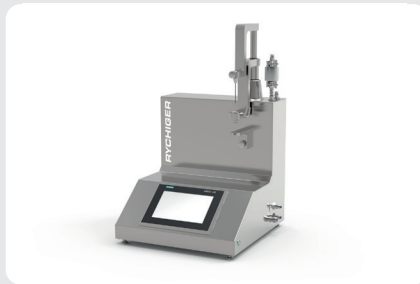
The units are available in versions designed to be integrated into a range of containment systems and include suitability for use with a VHP cycle. Batch report and audit trail are standard features, and the series is accompanied by a comprehensive set of (cGMP) documentation. Equipped with the same technology and components as the fully automatic Rychiger machines, repeatable and reliable process quality of the end product is guaranteed while scale up to larger production volumes is simple.



## Details



Z-Lab Fill, filling of syringes, cartridges and vials

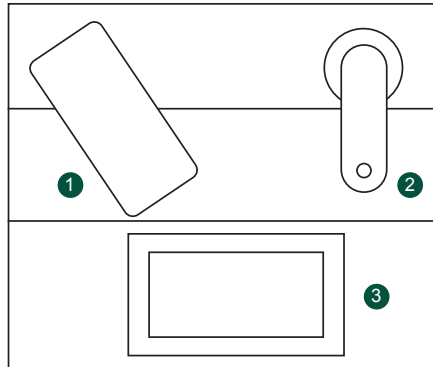


Z-Lab Close, vacuum stopper setting for syringes and cartridges



Z-Lab Crimp, secure crimping of vials

# Process illustration



- ① Piston Pump
- ② Filling
- ③ Touch Panel

## Technical data Z-LAB

The technical data might vary, depending on the container dimensions and shapes, the product to be filled, the machine configuration and material specifications.

Activation	Containers	Output/min
1 cycle per operation	all common RTU formats	5 - 10

Size (LxWxH)	Weight
0,48 x 0,46 x 0,75m	74 kg