



**GRACURE
PHARMACEUTICALS
LIMITED**

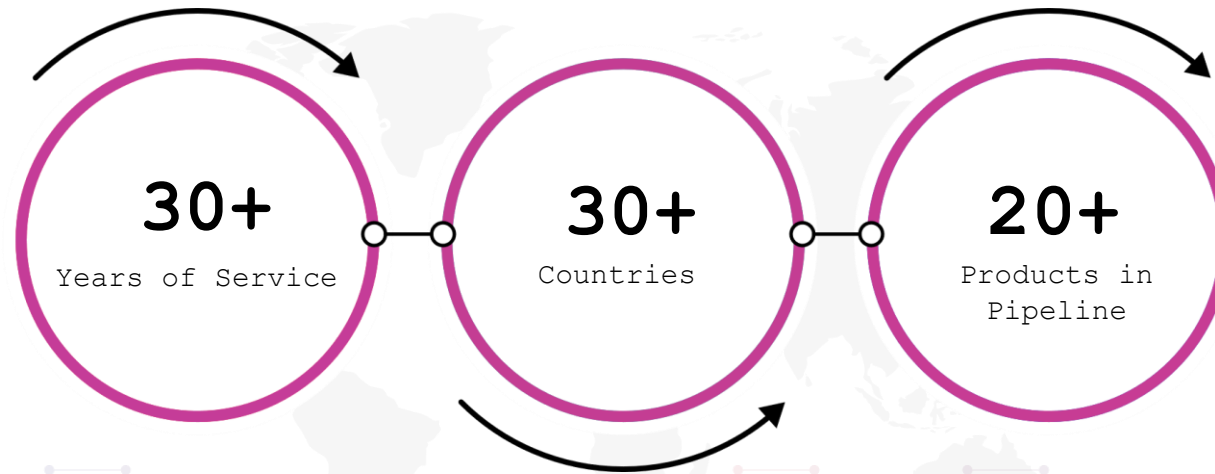


In Gracure, They Trust

Since 1992



With the growing health concerns in the past few decades, it has become crucial to cater to the ever growing need of quality generics. In 1992, Mr. A S Bhargava, with the idea of making healthcare accessible and safe, laid the founding stone of Gracure Pharmaceuticals Ltd. with a vision to significantly contribute in serving mankind.



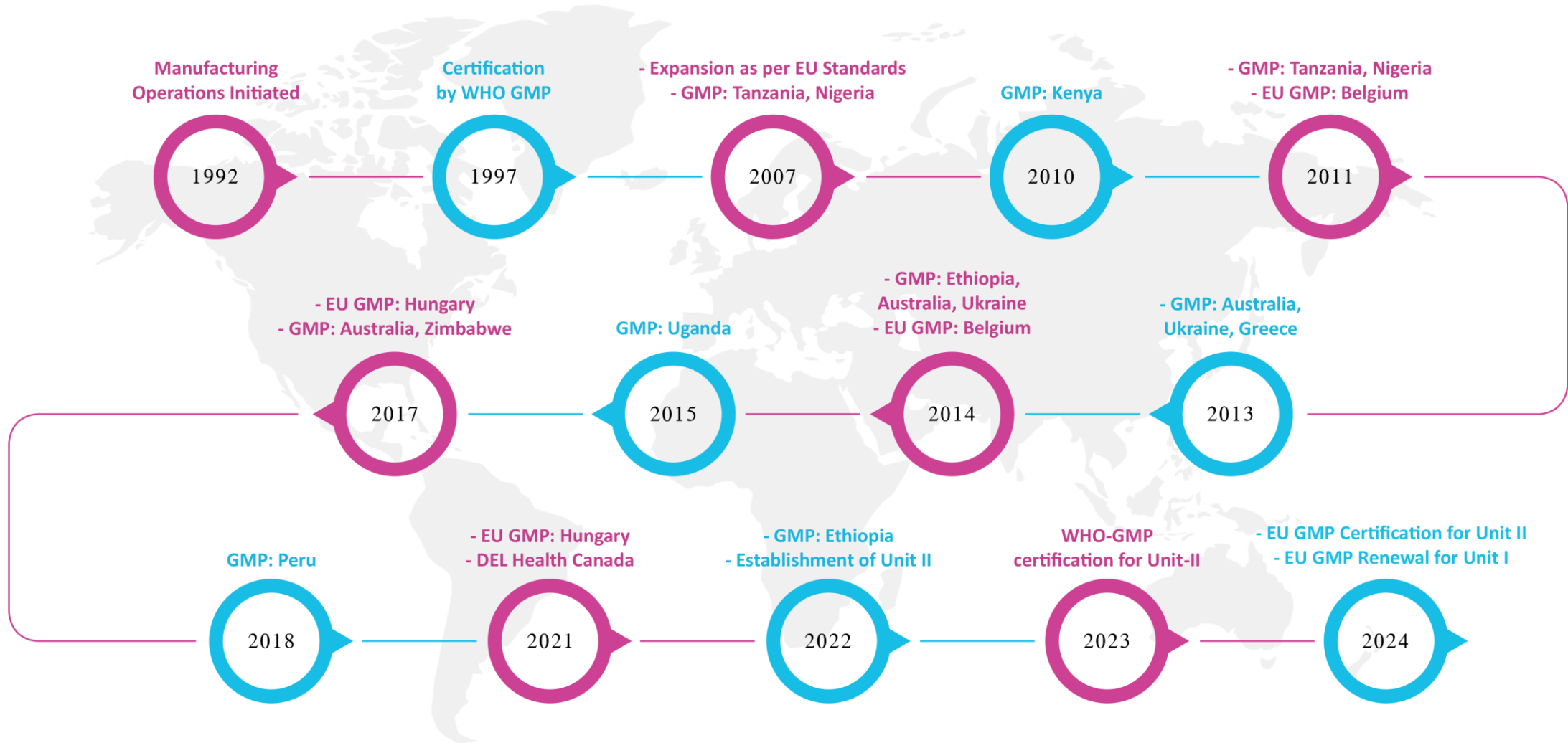
Vision

To increase our top line by 25% year over year by active participation of our creative people and customer support.



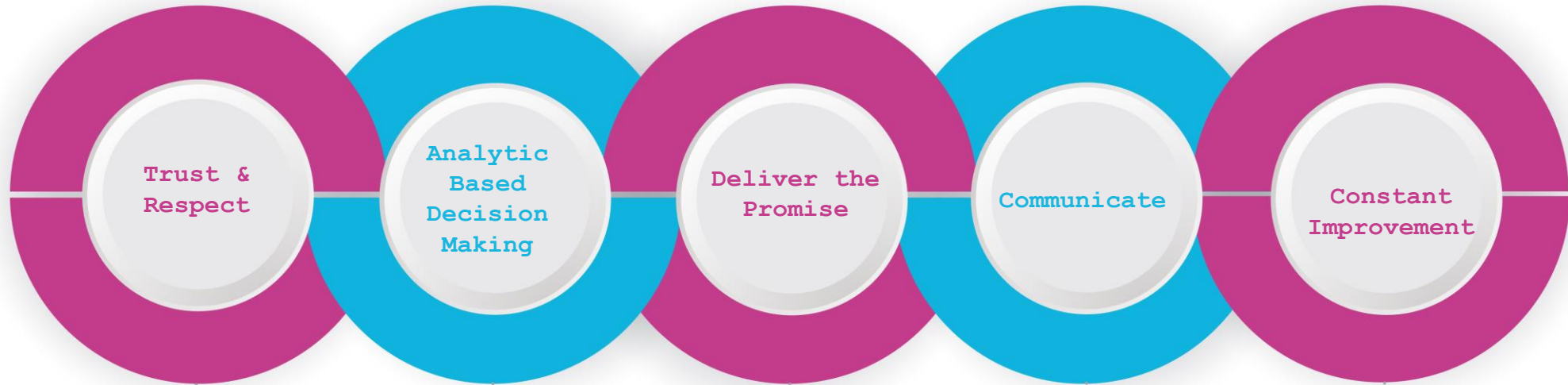
Serving the Industry

30+ Years of Trust & Experience





Fostering Values



We strive for the greatest standards in quality, compliance, safety, and performance with unwavering integrity at the heart of everything we do

At Gracure, data analysis is a key value, and all of our decisions are based on skillful and extensive analysis

We believe in understanding our customers and listening to their needs and ensuring to deliver customer focused products & services

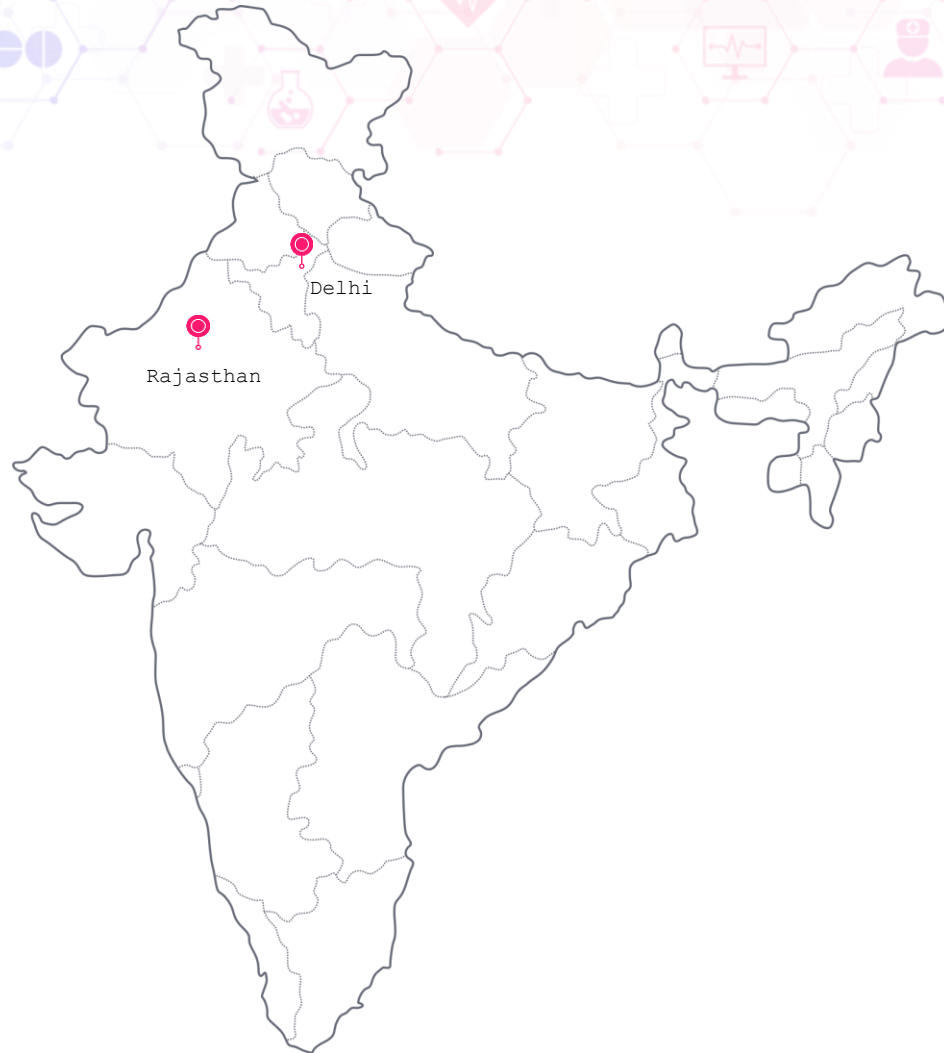
We believe that challenges should be communicated clearly. The sooner we communicate a problem, the easier it is to organize our company's resources to resolve it

Change energizes us, and we're always thinking ahead and finding new ways to serve our customers in a better way



Production Across India

Location of Plant, R&D and Head Office



Head Office, Delhi

Address:

251-254, 2nd Floor, DLF Tower, Block - IV,
15 Shivaji Marg, New Delhi- 110 015. India



Research & Development Centre, Rajasthan

Address:

E-1105, RIICO Indl. Area, Phase-III,
Bhiwadi (Rajasthan). India



Manufacturing Plants, Rajasthan

Unit-I Address:

E-1105, RIICO Indl. Area, Phase-III,
Bhiwadi (Rajasthan). India

Unit-II Address:

A-1118(F), RIICO Indl. Area, Phase-III,
Bhiwadi (Rajasthan). India



Thriving for a Greater Cause



Quality Policy

We regularly follow updated national and international standards to maintain safety, efficacy, identity, strength and purity of our products. We are committed to add value for our customers with continual improvements and innovations.

EHS Policy

Gracure Pharmaceutical Ltd. is committed towards Environment, Health and Safety for a better environment and safe work culture. We pledge to conduct business with respect and care for people, managing health and wellness for employees and society.

We endeavour for zero loss and no waste attitude with the responsible utilization of natural resources treating risk management controls.

Gracure Pharmaceutical strives to meet statutory and regulatory compliance in adherence with updated standards.



Global Accreditations

Success Around the Globe



HUNGARY



AUSTRALIA



CANADA



WHO GMP



UKRAINE



UGANDA



ETHIOPIA



PERU



YEMEN



PHILIPPINES



CONGO



IVORY COAST



Ensuring Trust & Safety

At Every Stage | Business Model



Contract Development

Our CDMO model offers quality generics developed against internationally accepted RLDs to our partners.



Contract Manufacturing

Our CMO model is focused on entering into long term supply agreements through technology transfers.



Out Licensing

With Gracure's in-house R&D capabilities, we strive to build a strong pipeline & portfolio of products for out licensing of dossiers.



State of the art Manufacturing

Production capabilities



Oral Solids

Tablets (uncoated & coated)
Capsule (Hard Gelatin)



Liquid Orals

Syrup
Suspension
Oral Drop Solution



Dry Syrups

Dry Powder for syrups
Suspension with stick pack &
Bottle



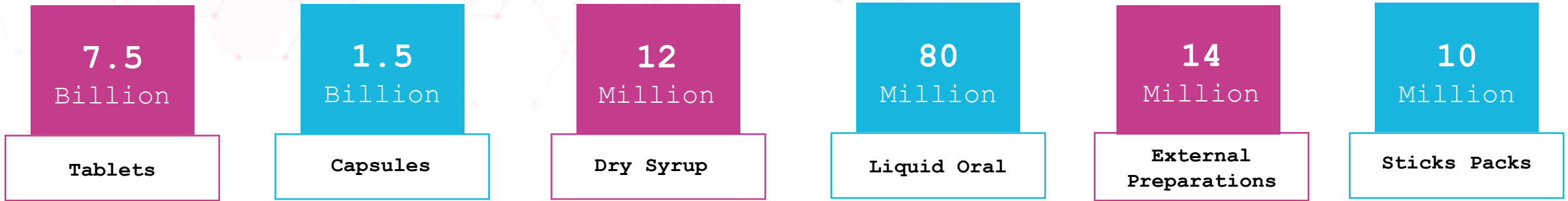
External Preparations

Gels
Ointments
Creams



Serving Industry

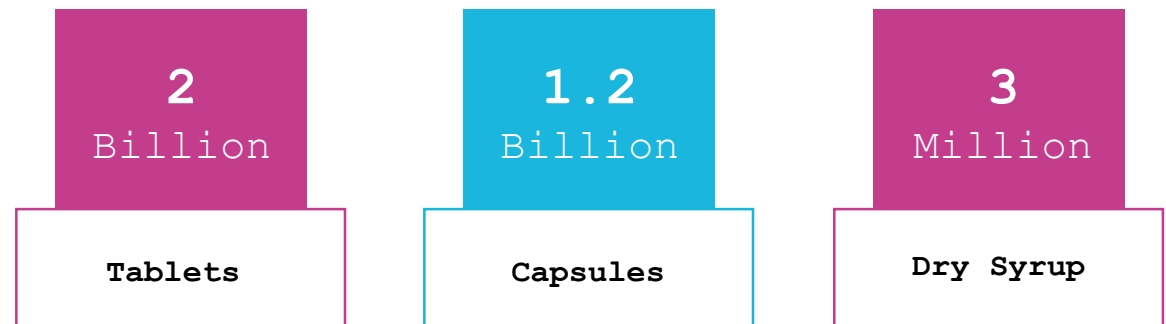
Annual capacities per single shift basis



CEPHALOSPORINS

(ONLY WHO GMP APPROVED)

Cephalosporin plant is approved by WHO GMP only.





Future-Ready Facility

Salient Features of the Facility



Unit 1

Unit 1 facility overview image with infographic overlay. The infographic consists of five diamond-shaped callouts with icons and text:

- Total area is 8,000 sq.mt.** (Icon: Area measurement)
- Unidirectional flow of men & material.** (Icon: Flow diagram)
- Operation wise hygiene zones.** (Icon: Hygiene shield)
- Qualified, trained & dedicated workforce.** (Icon: Workforce group)
- Separate air handling units for different processing areas.** (Icon: Air lock)

Unit 2

Unit 2 facility overview image with infographic overlay. The infographic consists of five diamond-shaped callouts with icons and text:

- Total area is 3,300 sq.mt.** (Icon: Area measurement)
- Unidirectional flow of men & material.** (Icon: Flow diagram)
- Operation wise hygiene zones.** (Icon: Hygiene shield)
- Qualified, trained & dedicated workforce.** (Icon: Workforce group)
- Separate air locks for entry of personnel & material into operational areas.** (Icon: Air lock)



Regulatory Affairs



World class Regulatory Affairs team with a great deal of experience in global regulatory management.

Our team is responsible for registering the company's products filed with various regulatory bodies globally.

The Regulatory Team develops and implements registration strategies to ensure that the Company's products are in compliance with International regulations and to produce high quality ethical products.



Pursuit for Innovation & Excellence

Research & Development



Total build up area over **4,000 sq.ft**



Regulatory and Project support to file dossiers for various territories.



Certified and approved **Research & Development Center by DSIR,** Government of India.



Capability to develop 20+ products per year.



Highly Qualified team of 35+ scientists in Product development & Analytical development.



Equipped with state of the art instruments

R&D Centre of Excellence



R&D Department is well equipped with state-of-the-art analytical instruments such as HPLC, UV-visible Spectrophotometer, Flame Photometer, LAF, Dissolution Apparatus and pH Meter, etc.

Focus on continuous innovation to produce novel formulations is an integral part of Gracure's R&D Centre.

The R&D is involved in developing generic pharmaceuticals encompassing all complex oral solid and liquid dosage form including tablets, capsules, syrups & external preparations including ointments & gels



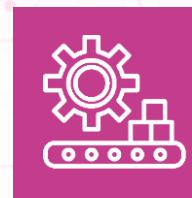
Product & Analytical Development



Project & Regulatory Support



Stability Studies As per ICH Guidelines



Pilot Plant / Scale-Up Production



Executive Leadership

Guiding Gracure Ahead



Mr. A.S. BHARGAVA

Chairman & Managing Director

Mr. A.S. Bhargava, the founder of Gracure Pharmaceuticals Ltd, is one of the most reputed business leaders in the pharmaceutical industry. Mr. Bhargava started Gracure in 1992 and has over 50+ years of experience in the Industry. Under his leadership and vision, Gracure today is recognized as a prominent player in contract manufacturing of pharma products.

Mr. PARAG BHARGAVA

Director

Mr. Parag Bhargava, is a highly ambitious business entrepreneur. Excellent at planning and analyzing operational work, he spearheads the business operation in Gracure. He is the driving force behind the accomplishments of the organization. His insight into every aspect of marketing and quality gives Gracure a competitive edge.

Mrs. SHEERE BHARGAVA

Associate Director

Mrs. Sheere Bhargava is a dynamic and experienced professional. She is highly focused and strongly determined. She holds a strong ideology of 'Aiming high with feet firmly on the ground', She has given a huge impetus to Gracure's presence in the pharmaceutical industry by reaching out to the most remote parts by maintaining strong regulatory acumen.



Global Reach





GRACURE PHARMACEUTICALS LIMITED

Address: 251-254, 2nd Floor, DLF Tower, Block– IV,

15 Shivaji Marg, Delhi- 110 015

Email: info@gracure.com

Tel : + 91 – 11 – 47770900