

algen'
NATURA



my
**healthy
boutique**

GENERAL CATALOGUE

Product Index

| | | | | | |
|----|-------------------------|----|-----------------------------------|-----|---|
| 2 | Nature First | 42 | Slim Detox Pancia Piatta | 98 | Nausea Control |
| 4 | Dol Care | 49 | XL Bruciagrassi | 99 | Nucleo Enzyvit |
| 5 | Dol Care compresse | 56 | Manuka honey | 92 | Nucleo Immuno |
| 7 | Allergies | 73 | Activ Em | 91 | Nucleo Plus |
| 8 | Lifert | 72 | Coli Act | 99 | Muscles, Bones and Joint Health. |
| 10 | Superbotanicals | 67 | Flu Relief | 106 | Benessere Ossa |
| 19 | Turmeric | 66 | Flu Relief Urto | 102 | Dol Gem |
| 14 | Echinacea & Astaxantina | 71 | Gastro HP | 104 | Eidos Mobility |
| 16 | Spirulina | 63 | Gola Sed | 101 | Lenimag Crema |
| 17 | Saffron | 64 | Immuno Plus | 105 | Nevralgem |
| 18 | Ginger | 69 | Manuka honey | 107 | Algem Lady |
| 20 | Supreme Nature | 70 | Oral Complex Gel | 111 | Benessere Vie Urinarie |
| 22 | Hepur | 65 | Ricostituente Forte | 110 | Ciclo Mestruale |
| 23 | Lipos | 58 | Sed Tosse | 109 | Lightlegs |
| 24 | Gummies | 59 | Sed Tosse Junior | 112 | Menopausa |
| 28 | Easy Shape | 60 | Spray Gola | 113 | Algem Total |
| 29 | Lacto Defence | 61 | Spray Gola Junior | 122 | Algem Cholesterol |
| 30 | Look at me | 74 | Uri Len | 126 | Ansyogem |
| 31 | Solar Touch | 76 | Vitamins and Minerals | 121 | Cholesterol Plus |
| 33 | Fruit Vitamin | 88 | Energy Tonic | 124 | Glycem Control |
| 34 | Relax Ashwagandha | 86 | Ferro & Acido Folico | 119 | Glutatione |
| 35 | Gola Manuka | 85 | Magnesio + Vit.B6 | 118 | Glucomannano FORTE |
| 36 | Popito | 84 | Mineral Energy | 129 | Hairloss |
| 38 | Popito stick | 82 | Multivitamin Multimineral | 115 | Immuno Algem |
| 39 | Popito gummies | 87 | Spirulina 600 | 116 | Immuno Algem Junior |
| 40 | Weight loss | 80 | Vitamina C Protetta + Retard | 130 | Mela Annurca |
| 45 | Drain Gem XL | 81 | Vitamina C Powder | 128 | Memory |
| 47 | Drain Gem XL Tabs | 78 | Vitamina D3 Capsule | 125 | Moringa Oleifera |
| 51 | Eidos Slim Shape | 79 | Vitamine D3 Gocce | 117 | Nac |
| 55 | Garcinia Cambogia | 89 | Gastrointestinal wellbeing | 123 | Omega 3 |
| 50 | Lino-Carnitine Diet | 96 | Anti Reflux | 132 | Prostalgem |
| 54 | Piperina & Curcuma | 93 | Eidos Fibre | 127 | Relax Night |
| 43 | Slim Detox | 95 | Laxy Gem | 131 | Skin & Sun |
| | | 94 | Laxy Gem Forte | | |

Nature first

Try NATURE first!

Our new Prima Natura supplements contain botanicals with a very high concentration of active ingredients mainly obtained by vertical farming.

This new technology allows us to obtain customized and residue free products, based on our needs.

NATURE FIRST

i

ONLY SELECTED SPECIFIC INGREDIENTS

Our technology allows us to obtain botanicals with a specific concentration of active ingredients that are free from residue, sustainable and completely traceable step by step.



Dol Care

Dol Care is a food supplement containing PEA, parthenium and phycocyanin. Particularly suitable against localized tensions (e.g. head and cervical pain).

cod: 0119

15 sticks of 1,5 mg each

SUPPLEMENT FACTS PER MAX. DAILY DOSAGE (3 STICKS)

| | QTY. | NRV* |
|---|--------|------|
| Palmitoylethanolamide (PEA) | 432 mg | - |
| Tanacetum parthenium (L.) tit. 0,3% parthenolides | 300 mg | - |
| Arthrospira platensis tit. 40% | 360 mg | - |
| of which phycocyanin | 144 mg | - |



vegan

sugar free

gluten free

lactose free

without artificial dyes

residue free

RECOMMENDED USE

Mild symptoms: 1 stick daily, dissolved in one glass of water.

Acute symptoms: up to 2-3 sticks daily, dissolved in one glass of water.

SUITABLE FOR

Those who regularly or occasionally suffer from tense headaches or pain caused by inflammatory states and are looking for a natural solution.

INGREDIENTS

Bulking agent: maltodextrin; Palmitoylethanolamide (Palmitoylethanolamide (PEA) supported by: medium chain triglycerides, polyethylene glycol, mono- and diglycerides of the fatty acids, sunflower lecithin, tocopherol, silicon dioxide), Spirulina (Arthrospira platensis Gomont) thallus D.E. tit. 40% in phycocyanin, Parthenium (Tanacetum parthenium (L.) Sch. Bip.) aerial parts with flowers powder tit. 0.3 % in parthenolides; Mint flavour; Anti-caking agent: Silicon Dioxide; Sweeteners: Stevia.

*NRV: Nutrient reference values.



Dol Care

OROSDISPERSIBLE TABLETS

Dol Care is a food supplement containing PEA, parthenium and phycocyanin. Particularly suitable against localized tensions (e.g. head and cervical pain).

cod: 0129

20 tablets of 1 g each



SUPPLEMENT FACTS PER

MAX. DAILY DOSAGE (3 TABLETS) QTY. NRV*

| | | |
|---|--------|---|
| Palmitoylethanolamide (PEA) | 432 mg | - |
| Tanacetum parthenium (L.) tit. 0,3% parthenolides | 300 mg | - |
| Arthrospira platensis tit. 40% | 360 mg | - |
| of which phycocyanin | 144 mg | - |

vegan

sugar free

gluten free

lactose free

without artificial dyes

residue free

RECOMMENDED USE

For mild tensions take one tablet daily, leave it in your mouth until it is dissolved.

For acute or moderate tensions take up to 3 tablets daily, taken at the same time if necessary.

SUITABLE FOR

Those who regularly or occasionally suffer from tense headaches or pain caused by inflammatory states and are looking for a natural solution.

INGREDIENTS

Sweeteners: sorbitol, sucralose; bulking agents: mannitol, corn starch; hydrodispersible palmitoylethanolamide, spirulina (Spirulina platensis (Gomont) Geitler tallo) d.e. tit. 40% in phycocyanin, Parthenium (Tanacetum parthenium (L.) Sch. Bip.) aerial parts with flowers powder 0,3 % parthenolides,; anty caking agents: sodium croscarmellose, magnesium salts of fatty acids, silica dioxide.

*NRV: Nutrient reference values.



A natural solution.

Dol Care is a natural food supplement containing PEA, Phycocyanin and Parthenium from vertical farming. Its very high concentration and quality of active ingredients has given proof of efficacy on localized tensions (e.g. head and cervical pain).

Useful in case of drug intolerance or sensitivity.

Dol Care is also suitable for those who can't take drugs or are allergic or intolerant to certain type of chemicals.



Effective to relieve:

Head tensions

Neck pain

Joint pain

Based on PEA

PEA (Palmitoylethanolamide) is a molecule naturally produced by our body in case of **pain** and **inflammation**. However, in case of chronic conditions or because of old age, its natural production may be limited.

Dol Care contains an hydrodispersible type of PEA, easily absorbed by the body.



Allergies

Algem Allergies is a supplement that can help reduce allergies affecting the upper respiratory system. It contains a mixture of selected plant extracts and is characterized by the presence of Black Currant and Ginger from vertical farming, able to support the well-being of the nose and throat and Adhatoda which promotes the fluidity of bronchial secretions.

cod: 1000

40 capsules - 400 mg each



vegan

gluten free

lactose free

SUPPLEMENT FACTS PER SERVING (2 CPS)

| | QTY. | NRV* |
|---------------------------|--------|------|
| Black currant D.E. tit 1% | 200 mg | - |
| Adhatoda D.E. tit 0,5% | 200 mg | - |
| Perilla E.S. D/E 4:1 | 100 mg | - |
| Zingerplus D.E. tit 5% | 100 mg | - |
| Boswellia D.E. tit 65% | 100 mg | - |
| Long pepper D.E. tit 90% | 20 mg | - |
| Zinc | 10 mg | 100% |

RECOMMENDED USE

Take 1 to 3 capsules a day, preferably with meals.

INGREDIENTS

Black currant (*Ribes nigrum* L.) leaves dry extract, Adhatoda vasica (*Adhatoda vasica* N.) leaves dry extract, Perilla (*Perilla frutescens* B.) seed dry extract, Boswellia (*Boswellia serrata* R.) resin dry extract, Zingerplus Cultipharm (Ginger mix (*Zingiber officinalis* Rosc.) rhizome powder and Ginger (*Zingiber officinalis* Rosc.) rhizome d.e.) tit 5% gingerols; Zinc gluconate, Long Pepper (*Piper longum* L.) fruit dry extract, Anti-caking agents: vegetable magnesium stearate, Micronized Silica. Capsules of plant origin (hypromellose).

*NRV: Nutrient reference values.



Lifert

Lifert is a supplement containing Maca, NAC and Arthrofertili Culti-pharm which promotes a normal spermatogenesis and the maintenance of normal testosterone levels.

COD: 1001

40 tablets of 1 g each



vegan

residue free

gluten free

lactose free

SUPPLEMENT FACTS PER MAX. DAILY DOSAGE (2 TABLETS) QTA. VNR*

| | | |
|----------------------|---------|-------|
| Arthrofertili | 500 mg | - |
| of which Phycocianin | 85 mg | - |
| of which Arginine | 54,5 mg | - |
| of which Methionine | 10 mg | - |
| of which Selenium | 20 µg | 36,4% |
| of which Zinc | 1,5 mg | 15% |
| Maca E.S. tit. 1% | 350 mg | - |
| N-acetylcysteine | 200 mg | - |
| Vitamin E | 60 mg | 500% |

RECOMMENDED USE

Take 2 tablets daily, one before each meal.

INGREDIENTS

Arthrofertili: Spirulina (Arthrospira platensis Gomont) tallus powder ad extract; Bulking agent: cellulose; Maca (Lepidium meyenii Walp) root D.E. tit. 1% in glucosinolates, Vitamin E (D-alfa tocopheryl acetate tit.50%), N-Acetylcysteine; Anti-caking agents: mono and diglycerides of fatty acids, magnesium salts of fatty acids, micronized silica.

*NRV: Nutrient reference values.



A988660078

Men's natural support.

Men's natural support.

Lifert is a zero-residue supplement, developed to improve men's fertility and libido. Its active ingredients work on spermatogenesis, on sperm motility and help maintain normal testosterone levels and low rates of oxidative stress. The product is therefore recommended to support men's sexual and reproductive health.

Top quality.

The presence of zero residue botanicals is particularly important as a guarantee of the total absence of pollutants which are often the main cause of oxidative stress, decrease in fertility and low sperm vitality.

With Arthrofertil.

Arthrofertil is an *Arthrospira platensis* extract, grown by proprietary Cultipharm technology. Active ingredients obtained are Zinc, Arginine, Methionine, Selenium and Phycocyanin that work on:

- infertility prevention caused by oxidative stress;
- promotion of normal spermatogenesis;
- improvement of sperm motility.



N-acetylcysteine, Maca and Vitamin E against oxidative stress.

N-acetylcysteine (NAC) is a powerful antioxidant ingredient and a glutathione precursor, which is a very important molecule that helps protecting cells from oxidative stress.

Scientific studies suggest that NAC and Vitamin E can have a positive effect on men's fertility by improving the quality of sperm. NAC is able to eliminate free radicals and to reduce oxidative stress that could damage sperm and reduce its motility and vitality.

Moreover, by increasing glutathione levels, it can further work on decreasing oxidative stress.

The association of those antioxidant molecules with our specific Maca extract is able to improve its tonic functions and to obtain a positive effect on libido.

Superbotanicals[®]

by supreme nature

Never seen before quality!

Our Superbotanicals have arrived! We know everything about them, they are grown in italian vertical farms and are residue-free certified.

i

VERY HIGH BIOAVAILABILITY

Thanks to our technology the obtained botanicals have a very high concentration of active ingredients. The high quality of our botanicals allows us to use more parts of the plant (phytocomplex), therefore we obtain a better quality/quantity and improved nutrients absorption.



Superbotanicals®

by supreme nature

Botanicals

The first italian vertical farm in phytotherapy.

Our greenhouse (called "phytotron") is 100% powered **by photovoltaic energy** and the ideal climatic conditions are reproduced to allow the plant to grow far from contaminations and adverse atmospheric agents. We harvest our botanicals during their balsamic time, in order to obtain a specific and high percentage of active ingredients **adapted to our needs.**

Vertical Farm Benefits

The perfect climate of the phytotron allows our plants to grow faster and better. We can repeat multiple cycles during the year to obtain the best quality and **concentration of active ingredients.**

Our crops produce a much higher yield, 5 times superior than the traditional one, not only for the presence of an ideal climate but also for the absence of variables related to **cultivation soil** and **atmospheric agents.**

Genetic beauty

Our botanicals have genetic characteristics constantly monitored from seeds/bulb DNA (through molecular biology techniques) throughout plant harvest. This ensures that all the specific genetic traits of the botanical are maintained during its growth. Thanks to our protocols, they **grow far from external contaminations**, avoiding hybridization phenomena most frequent in open field cultivations.

Residue free

The staff has access to the Vertical Farm through an anti-chamber in which the technicians wear sterilized clothing. This protocol guarantees the total sterility of the environment which is **completely isolated** from the outside and, therefore, from possible contaminations that could impair their quality. This allows us to grow our botanicals without using phytosanitary products like pesticides, fungicides, herbicides, ect..



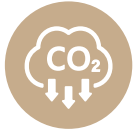
Unique

Thanks to our approach and to our innovative protocols we are the **only industrial entity** in nutritional supplements certified residue and heavy metal free (lead, arsenic, cadmium, nickel, etc..).

Controlled supply chain

During a cultivation process, from sowing to harvest, many steps take place that can deteriorate the quality and the quantity of active ingredients obtained. For example, between the harvest phase and the extraction of active ingredients a considerable amount of time elapses and the phytocomplex integrity is compromised. Similar problems can occur when raw materials undergo long journeys before arriving to destination (because of shipment conditions too). Thanks to the local management of storage and extraction, combined with our working processes, the "plant stress" has been reduced at minimum.

I'm green, I'm sustainable, I'm powerful



LOW EMISSIONS

Locally grown, respectful of the environment.



RENEWABLE ENERGY

Fully powered by photovoltaic system.



SAVE WATER

95% less water than traditional cultivations.



SAVE SOIL

Developed in small areas with no soil as growing substrate.



ZERO POLLUTANTS

We don't use pesticides to preserve soil and aquifer integrity.



SAFE FOR HUMANS

Completely free of heavy metal residues (lead, nickel, etc...).



ECO PACKAGING

Pharmaceutical glass packaging, 100% recyclable.



GMO FREE

Genetic profile of the plant is continuously monitored.

Seaweeds

Our algae

In case of algae or microalgae the cultivation method makes the difference between a product with high quality or a potentially dangerous one. In particular Spirulina acts as a sort of "sponge" absorbing every substance contained in its growing environment. This characteristic makes it particularly **exposed to pollutants and heavy metal contaminations** (lead, cadmium, mercury, arsenic...)

An italian product

It is increasingly common to find low cost micro-algae in supplements, they are usually from countries where Spirulina is cultivated in open outdoor pools (in particular China and India). This method of cultivation is potentially dangerous for our health because seaweeds are "bio accumulators", making this supplement potentially dangerous for our health. In addition, long shipments and an incorrect storage can damage the raw materials destroying active ingredients, minerals, vitamins and aminoacids.



The cultivation, the storage and the processing of Spirulina take place all in the same manufacturing facility which is fully powered by renewable energy. Our protocols are optimized to avoid any type of contamination, we therefore obtain a very safe and highly effective product.

Echinacea & Astaxantina

Echinacea & Astaxantina is a supplement with a high concentration of active ingredients. The supplement helps promoting the body's natural defences and has strong antioxidant properties.

cod: 3009

40 capsules of 436 mg

SUPPLEMENT FACTS PER SERVING (2 CAPSULES)

| | QTA. | VNR* |
|----------------------|--------|------|
| Echinacea Plus Mix | 300 mg | - |
| Oxanthin Cultipharm® | 40 mg | - |
| Of which astaxanthin | 2 mg | - |



vegan

sugar free

gluten free

lactose free

RECOMMENDED USE

Take 1 or 2 capsules daily.

RECOMMENDED FOR

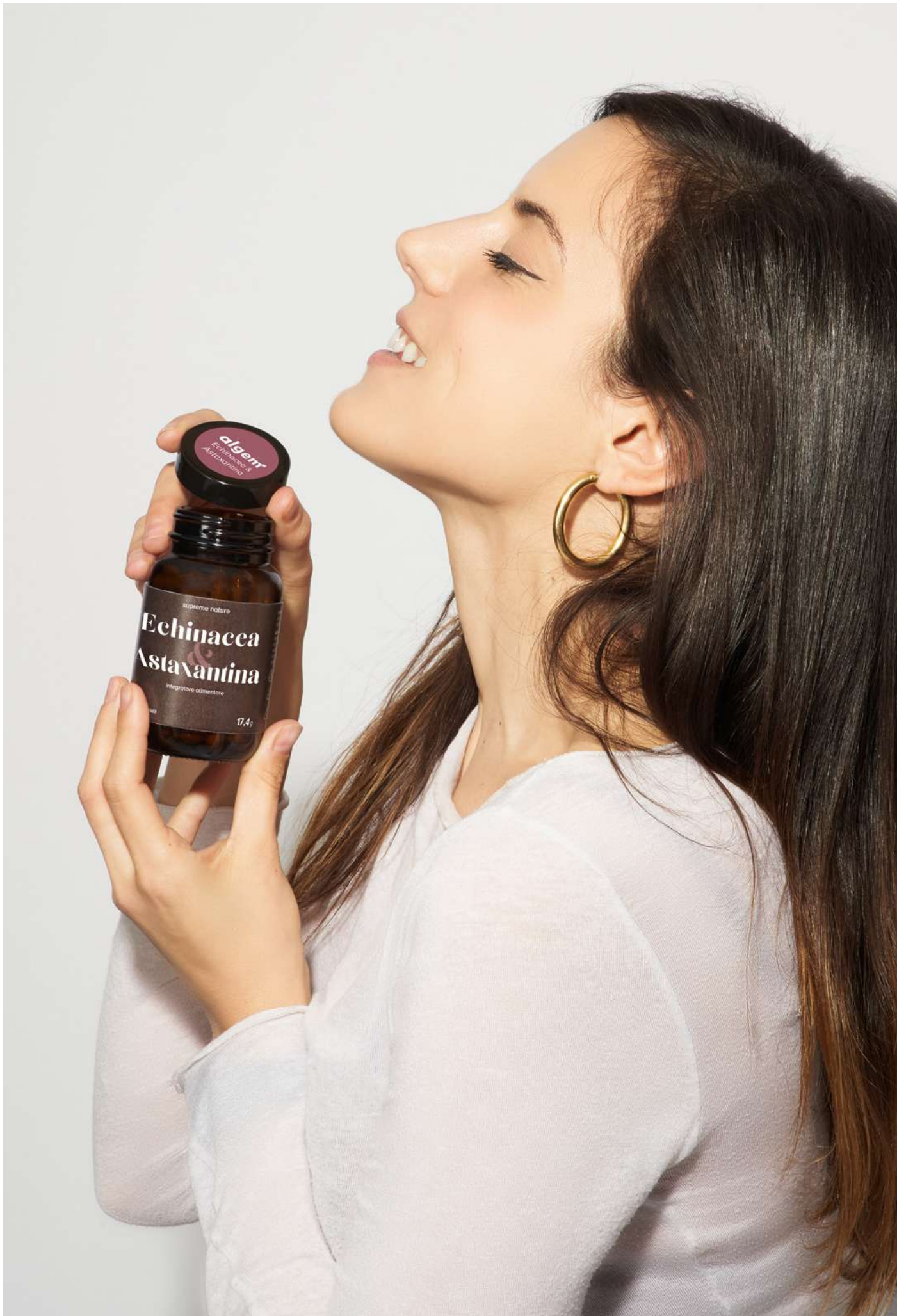
As prevention before winter season or during the change of seasons; during the acute stages of an infection or inflammation to help the body's natural defences.

INGREDIENTS

Starch; Bulking agent: calcium carbonate; anti-caking agents: magnesium salts of fatty acids, silicon dioxide; Echinacea Plus Mix (Echinacea purpurea (herba) microgreens-Echinacea Pallida (radix) extract in supercritical CO2) tit. 0.5% in echinacoside and 0.02% in alcamides; Coating agent: hydroxypropylmethylcellulose; Heamatococcus pluvialis powder D.E. tit. 0.5% in astaxanthin.

*NRV: Nutrient reference values.



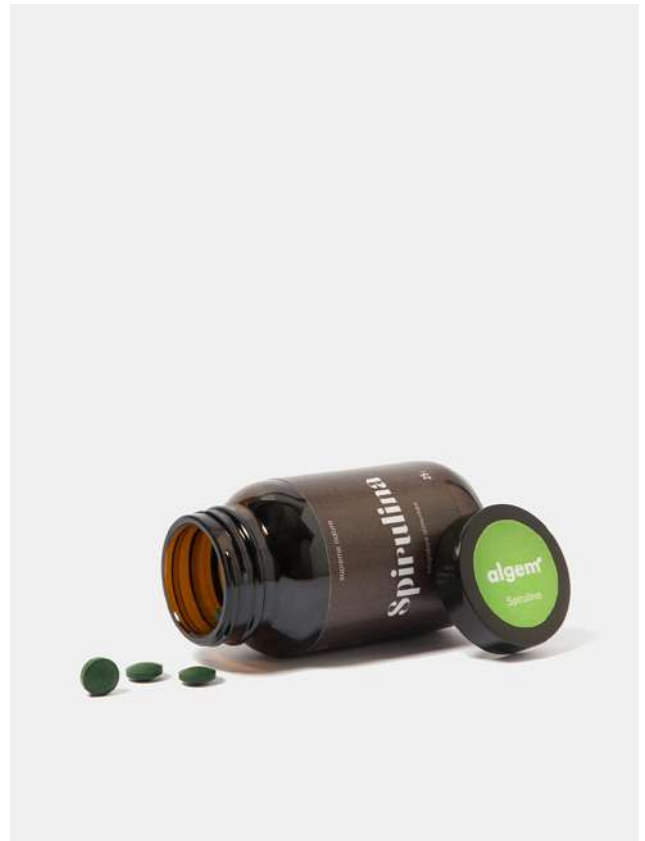


Supreme Spirulina

Organic spirulina, high in phycocyanin and zinc. Produced and cultivated in Italy in a controlled environment. No pollutants and heavy metal contaminations.

cod: 3003

50 tablets of 500 mg each



vegan

lactose free

gluten free

from organic agriculture

nickel free

SUPPLEMENT FACTS PER SERVING (2 TABLETS)

| | QTY. | NRV* |
|----------------------|---------|------|
| Organic Spirulina | 1000 mg | - |
| of which Phycocyanin | 140 mg | - |
| of which Zinc | 4 mg | 40% |

RECOMMENDED USE

2 tablets daily.

INGREDIENTS

Organic Spirulina powder (Organic Spirulina Platensis (Gomont) geitler-tallo) tit. 14% phycocyanin and 0.4% zinc.

*NRV: Nutrient reference values.



Supreme Saffron

Saffron with high content of active ingredients, cultivated in Italian Vertical Farm in a controlled environment without the use of herbicides, pesticides and 100% free of heavy metals. Particularly suitable to promote mental well-being.

cod: 3002

45 capsules of 370 mg each



vegan

lactose free

gluten free

residue free

nickel free

SUPPLEMENT FACTS PER SERVING (2 CPS)

| | QTY. | NRV* |
|-------------------|---------|------|
| Saffron powder | 40 mg | - |
| of which Safranal | 1,6 mg | - |
| of which Crocin | 0,68 mg | - |

RECOMMENDED USE

1 or 2 capsules daily.

INGREDIENTS

Tapioca starch, Saffron Powder (*Crocus sativus* L.) stigmas and flowers tit. 4% in safranal and 1,7% in crocin. Capsules of plant origin (Hydroxypropyl methylcellulose).

*NRV: Nutrient reference values.

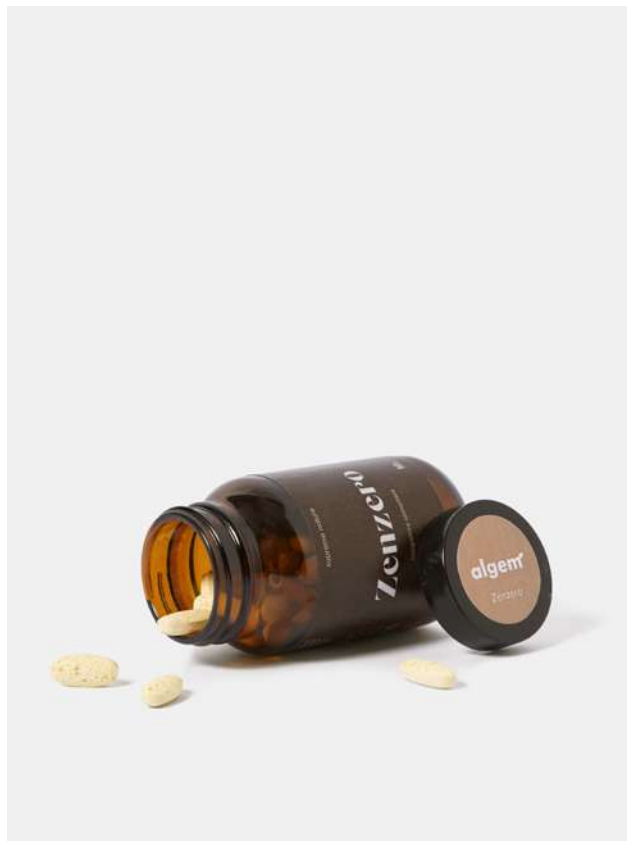


Supreme Ginger

Full spectrum highly bioavailable ginger cultivated in Italy under a controlled environment. Highly indicated as anti-nausea, to help digestive functions and the body gas elimination.

cod: 3005

50 tablets of 1000 mg each



vegan

lactose free

gluten free

residue free

nickel free

SUPPLEMENT FACTS PER SERVING (2 TABLETS)

| | QTY. | NRV* |
|----------------------|--------|------|
| Ginger full spectrum | 800 mg | - |
| of which gingerols | 32 mg | - |
| of which terpens | 0,16mg | - |

RECOMMENDED USE

2 tablets daily. In case of travel sickness, take 2 tablets half an hour before the departure

INGREDIENTS

Microcrystalline cellulose, Cultipharm Ginger (Zingiber officinal ginger) powder, Ginger (Officinal Zingiber - Rhizoma) dry extract, Calcium phosphate tribasic, silicon dioxide, magnesium salt of fatty acids.

*NRV: Nutrient reference values.

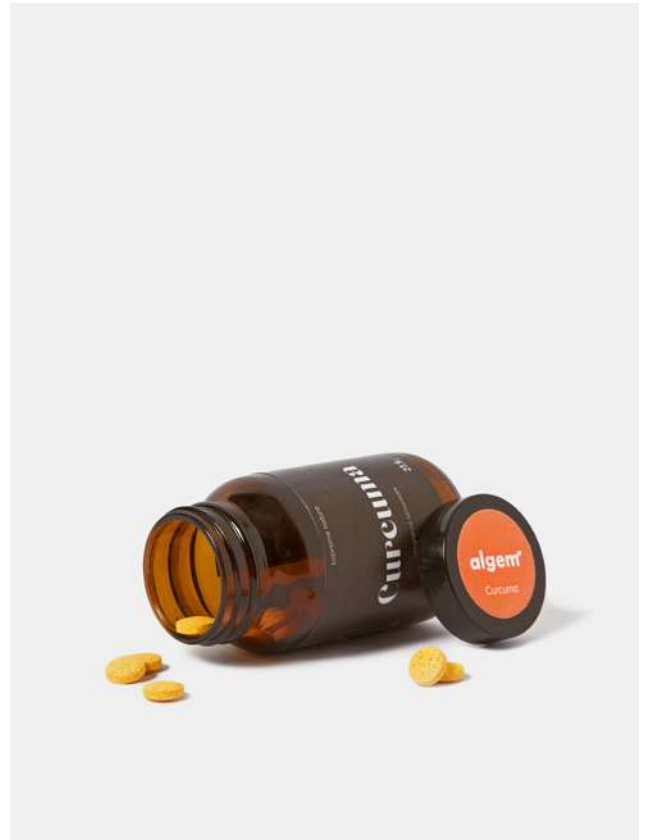


Supreme Turmeric

Full spectrum + lyposomial turmeric.
It helps reducing inflammation, menstrual pain
and to improve joint function.

COD: 3004

50 tablets of 550 mg each



vegan

lactose free

gluten free

residue free

nickel free

SUPPLEMENT FACTS PER SERVING (2 TABLETS)

QTY.

NRV*

| | | |
|--------------------------------|--------|---|
| Full spectrum turmeric rhizome | 400 mg | - |
| Phytosoma curcumin | 200 mg | - |
| Total curcuminoids | 52 mg | - |
| Total flavonoids | 2,4 mg | - |

RECOMMENDED USE

2 tablets daily.

INGREDIENTS

Microcrystalline cellulose, Lyposomial turmeric (Curcuma Longa L. - Rhizoma), Turmeric (Curcuminoids from Curcuma longa L's rhizomes; SOY phospholipids), silicon dioxide, magnesium salt of fatty acids.

*NRV: Nutrient reference values.



Supreme nature

Not only “Superbotanicals”, but flavors and scents that bring us on an around-the-world trip; exclusive supplements based on a thorough nature-based research becoming pure wellness.

SUPREME
NATURE



**A FOCUS ON
ENVIRONMENTAL
SUSTAINABILITY.**

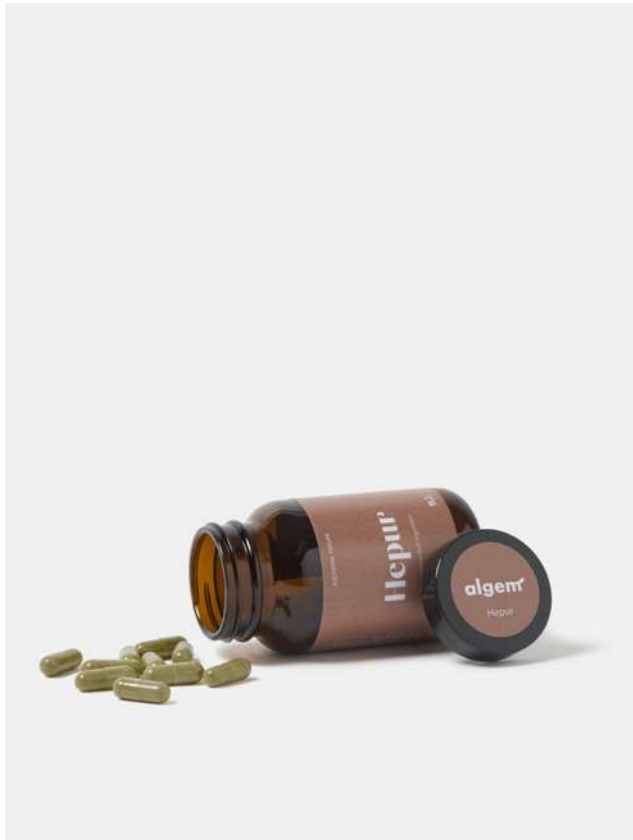
Scientific evidence continues to show that human activities have warmed Earth's surface and its ocean basins, which in turn have continued to impact Earth's climate. Those changes are increasingly responsible for the possibility of more droughts and increased intensity of storms and other catastrophic events. Algem is actively working to find low impact solutions on environment, both concerning the manufacturing process and the raw materials used in each supplement.



Supreme Hepur

Hepur is a supplement containing micro-algae and vegetable extracts able to prevent bloating and liver disorders due to fat, sugar and toxin's accumulation.

cod: 3006 40 capsules of 480 mg each



vegan gluten free lactose free
residue free nickel free

| SUPPLEMENT FACTS PER SERVING (2 CPS) | QTY. | NRV* |
|--------------------------------------|--------|------|
| Artichoke D.E. tit. 10% | 100 mg | - |
| Milk thistle D.E. tit 20% | 200 mg | - |
| Burdock D.E. tit. 4% | 100 mg | - |
| Dandelion D.E. tit. 2% | 100 mg | - |
| Cultipharm chelating mix | 100 mg | - |

RECOMMENDED USE

Take 2 capsules daily in the morning on an empty stomach. In case of swallowing problems open the capsule and dissolve the product in water.

INGREDIENTS

Milk Thistle microgreens (*Silybum marianum* L. Gaertn.) aerial parts 20% tit. in silymarin; Coating Agent: hydroxypropyl methylcellulose; Altilix (Artichoke (*Cynara carunculus* L.) leaves D.E. tit 10% chlorogenic acid); Burdock microgreens (*Arctium lappa* L.) aerial parts 4% inulin tit.; Dandelion (Official *Taraxacum* (L.) Weber ex F.H.Wigg.) root D.E. tit. 2% inulin; Cultipharm chelating mix (*Chlorella vulgaris* Beijerinck thallus, *Spirulina platensis* (Gomont) Geitler thallus); Citric acid; Flavors; Bulking agents: microcrystalline cellulose, corn starch; Magnesium salts of fatty acids; Sweetener: Stevia.

*NRV: Nutrient reference values.

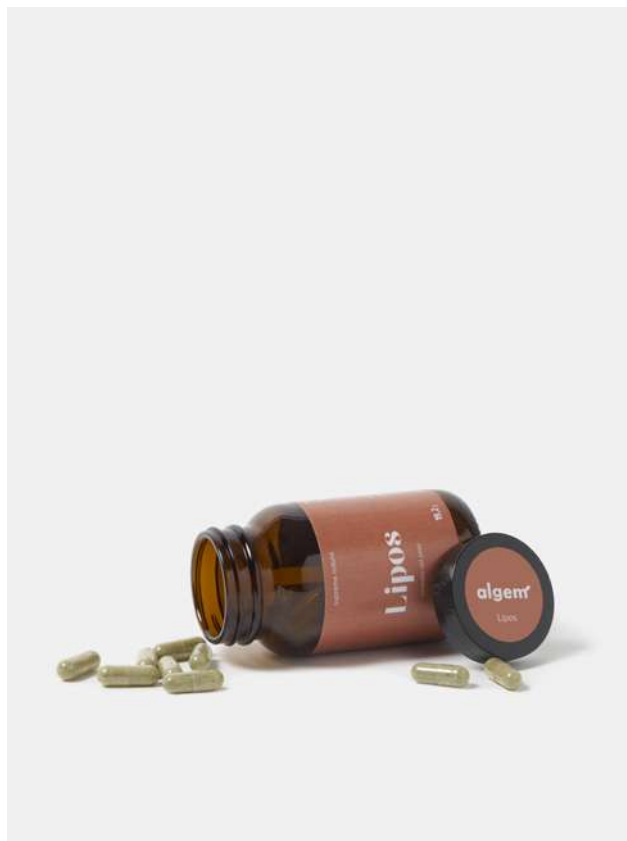
PRESERVATION: Store in a cool, dry place, away from heat sources | **PRODUCT SHELF LIFE:** 3 years from manufacturing date.
WARNINGS: Keep out of reach of children under 3 years. Do not exceed the recommended daily dose. Supplements should not be used as substitutes for a varied and balanced diet and a healthy lifestyle. If pregnant or breastfeeding ask advice to your doctor. Avoid in case of hypersensitivity to one or more ingredients. Store in a cool, dry place, away from heat sources.

Supreme Lipos

Lipos is a supplement containing probiotics, digestive enzymes and ingredients useful to promote weight control and boost metabolism.

cod: 3007

40 capsules of 480 mg each



SUPPLEMENT FACTS PER SERVING (2 CPS)

| | QTY. | NRV* |
|---|-------------------------------------|------|
| Complexzyme-5 Vegan | 100 mg | - |
| Spirulina | 200 mg | - |
| Inositol | 100 mg | - |
| Probiotic Mix | | |
| Bifidobacterium breve BR03 Lactobacillus gasseri LGS03 | Live Cells: not less than 2 billion | |

vegan

gluten free

lactose free

residue free

nickel free

RECOMMENDED USE

Take 1 capsule just before lunch and 1 capsule just before dinner.

INGREDIENTS

Inositol; Spirulina (Spirulina platensis Gomont Geitler, thallus); Complexzyme-5 Vegan (Maltodextrin, Alpha-amylase, Lactase, Protease, Cellulase, Lipase); Bifidobacterium breve BR03; Lactobacillus gasseri LGS03; Coating agent: Hydroxymethylpropyl cellulose; Anticaking agents: Magnesium salts of fatty acids, micronized silica.

*NRV: Nutrient reference values.

PRESERVATION: Store in a cool, dry place, away from heat sources | PRODUCT SHELF LIFE: 3 years from manufacturing date.

WARNINGS: Keep out of reach of children under 3 years. Do not exceed the recommended daily dose. Supplements should not be used as substitutes for a varied and balanced diet and a healthy lifestyle. If pregnant or breastfeeding ask advice to your doctor. Avoid in case of hypersensitivity to one or more ingredients. Store in a cool, dry place, away from heat sources.



Gummies

7 coloured and pop flavoured products.
Not only vitamins but specific formula to
meet different needs all year round.



GUMMIES



ARE GUMMY SUPPLEMENTS EFFECTIVE?

Thanks to the experience and the knowledge of our R & D team, we are able to guarantee that the efficacy of this pharmaceutical form is the same as the other "traditional" forms like capsules or tablets. Try it to believe it!



Gummy rainbow

Gummies

A combination of flavour and wellness!

Taking supplements daily is often perceived as a duty, “a bitter pill to swallow”. This can have a negative impact on the regular use of supplements.

Yummy and gelatin free.

They meet everyone’s needs, especially for those on a vegan diet or with food intolerance (i.e. gluten, lactose). For all these reasons Algem gummies are produced without animal gelatine.

Vegan texture.

Animal gelatin has been traditionally used to give gummies their typical texture. Thanks to corn starch and maltitol we were able to give to our gummies stability and consistency as well, reaching our goal: a very high quality product, 100% vegetable and so yummy!

Only natural dyes.

Beautiful and colorful thanks to 100% natural dyes such as curcumin (E100) and sweet potato.

Without added sugars.

Maltitol and Stevia Rebaudiana guarantee high sweetness with a very low daily caloric intake.



Our gummies.



Sugar Free



NO! Animal gelatin



Lactose free



Gluten free



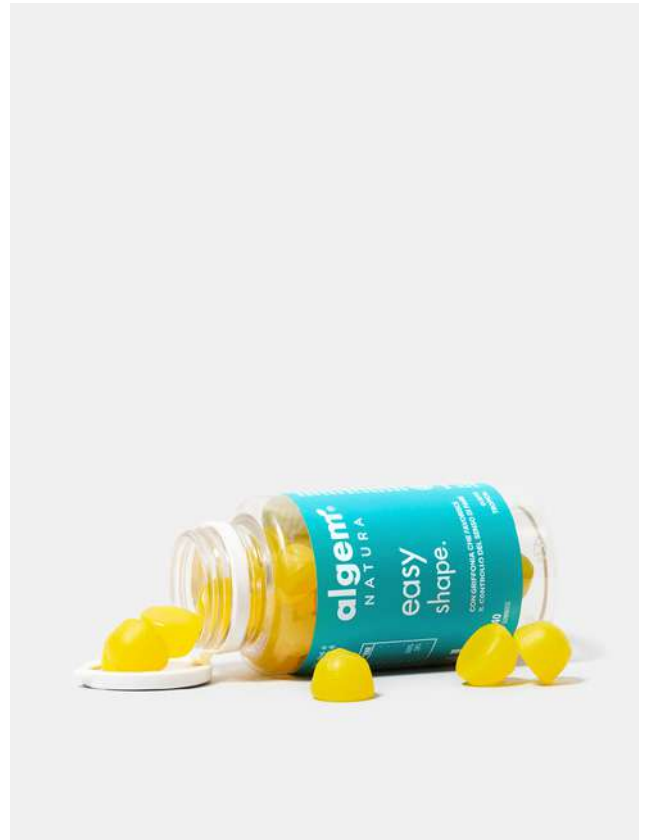
Easy Shape

Easy shape is a gummy supplement that promotes appetite control and weight loss. It contains Apple Cider Vinegar, 5-HTP (from Griffonia), Vitamin D, Chromium, Cloves and Mango.

cod: 0099

40 gummies of 4 gr each

Tropical Flavour



vegan

sugar free

gluten free

lactose free

no animal gelatin

SUPPLEMENT FACTS PER SERVING (1 GUMMY)

QTY.

NRV*

| | | |
|----------------------------------|---------------------|------|
| Apple Cider Vinegar | 500 mg | - |
| Cloves | 150 mg | - |
| Griffonia D.E. 25% tit. in 5-htp | 100 mg | - |
| Vitamin D | 0,025 mg 1000 UI | 500% |
| Chromium | 20 µg | 50% |
| Mango D.E. | 100 mg | - |

RECOMMENDED USE

Take 1 - 2 gummies daily.

INGREDIENTS

Apple Cider Vinegar powder, Cloves (*Syzygium aromaticum*) powder, Griffonia D.E. (*Griffonia simplicifolia*) 25% tit. in 5-HTP, Cholecalciferol (D3 Vit.), chromium polynicotinate, Mango D.E. (*Irvingia gabonensis*), Stevia rebaudiana, Maltitol Syrup, Amides, Water, Maltitol Powder, Dye: turmeric, Flavour: Tropical fruits.

*NRV: Nutrient reference values.



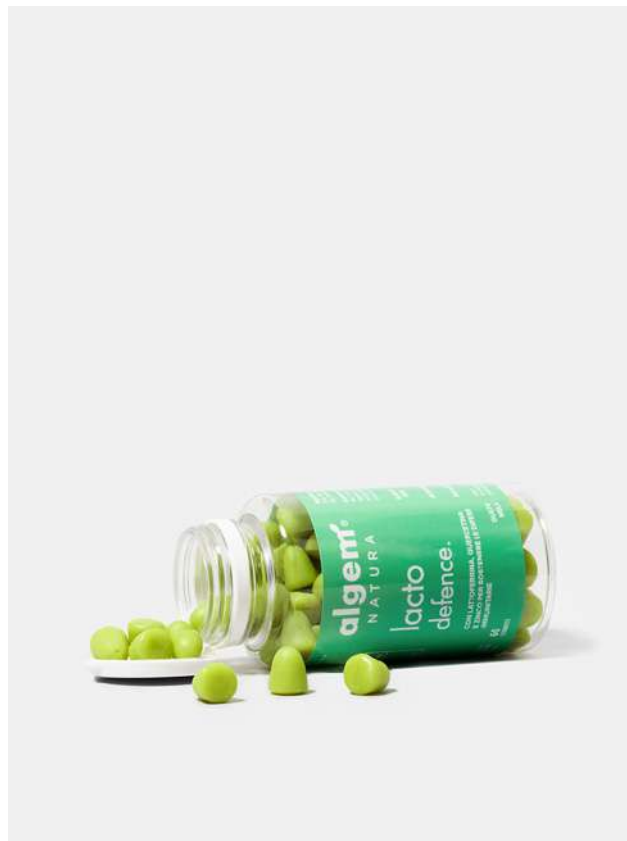
Lacto Defence

Lacto Defence is a food supplement containing lactoferrin, quercetin, FOS and zinc that help regulate the immune system function.

cod: 0098

60 gummies of 3 gr each

Apple Flavour



sugar free

lactose free

gluten free

with lactoferrin

SUPPLEMENT FACTS PER MAX DAILY DOSAGE (1 GUMMY)

| | QTY. | NRV* |
|-------------|--------|------|
| Lactoferrin | 100 mg | - |
| Quercetin | 100 mg | - |
| FOS | 50 mg | - |
| Zinc | 3 mg | 30% |

RECOMMENDED USE

Adults: take 2 gummies daily
Children (>10 years old): take 1 gummy daily.

INGREDIENTS

Lactoferrin, quercetin, fructooligosaccharides (FOS), zinc gluconate, corn starch, Maltitol powder spray dry, maltitol syrup, water, apple flavour, natural chlorophyll and curcumin dye.

*NRV: Nutrient reference values.



Look at me

Look at me is a food supplement containing zeaxanthin, Lutein, zinc, vitamins and plant extracts for healthy eyes.

cod: 0097

90 gummies of 2 gr each

Raspberry Flavour



vegan

sugar free

gluten free

lactose free

SUPPLEMENT FACTS PER SERVING (1 GUMMY)

QTY.

NRV*

| | | |
|----------------|--------|--------|
| Vitamin C | 160 mg | 200% |
| Blueberry E.S. | 150 mg | - |
| Vitamin E | 20 mg | 166,7% |
| Zeaxanthin | 5 mg | - |
| Lutein | 4 mg | - |
| Zinc | 3,5 mg | 35% |

RECOMMENDED USE

Adults: take 3 gummies daily
Children: take 1 - 2 gummies daily

INGREDIENTS

Vitamin C (Ascorbic Acid), Blueberry D.E. tit. 25%, Vitamin E (Tachopheryl acetate), zeaxanthin, Lutein, Zinc, Maltitol syrup, starch, water, Maltitol powder, natural red dye, Flavour raspberry.

*NRV: Nutrient reference values.



Solar Touch

Solar touch is a food supplement containing Hyaluronic Acid, Beta-Carotene and Vitamin C that contributes to the cells protection from oxidative stress.

cod: 0101

40 gummies of 4 gr each

Orange Flavour



vegan

sugar free

with hyaluronic acid

gluten free

lactose free

SUPPLEMENT FACTS PER SERVING (1 GUMMY)

| | QTY. | NRV* |
|-----------------|--------|------|
| Lycopene | 3 mg | - |
| Beta-carotene | 3 mg | - |
| Carrot D.E. | 100 mg | - |
| Vitamin C | 80 mg | 100% |
| Vitamin E | 12 mg | 100% |
| Hyaluronic Acid | 50 mg | - |
| Flax Seed Oil | 50 mg | - |

RECOMMENDED USE

Take 1 - 2 gummies daily. Start at least 30 days before sun exposure and continue during summer.

INGREDIENTS

Maltitol syrup, Corn Starch (Zea Mays L.), Water, Maltitol powder, Wild Carrot (Daucus carota L.) root D.E., Lycopene from tomato (Solanum Lycopersicum L.) powder (excipient: corn starch), L-Ascorbic Acid, Sodium Hyaluronate, Flax Seed Oil (Linum usitatissimum L.) powder, Dye: E100, Red strawberry; Vitamin E acetate, Orange Flavour, Beta-carotene powder, Sweetener: Stevia rebaudiana.

*NRV: Nutrient reference values.





Fruit Vitamin

Algem Fruit Vitamin is a supplement containing vitamins, minerals and natural extracts from fruits and vegetables. Rich in nutrients, it is useful to support a healthy growth of bones and muscles in children and adolescents.

cod: 0116

51 gummies of 3g each

Fruit flavour



vegan

sugar free

gluten free

lactose free

QUANTITY FOR 1 GUMMY

| | QTY. | NRV* |
|----------------------------|--------|------|
| Apple D.E. 50% polyphenols | 200 mg | - |
| Raspberry D.E. | 100 mg | - |
| Carrot D.E. | 100 mg | - |
| Acerola D.E. 50% | 160 mg | - |
| of which Vitamin C | 80 mg | 100% |
| Vitamin D | 5 mcg | 100% |
| Ficus fruit D.E. 10:1 | 100 mg | - |
| Zinc | 2,5 mg | 25% |
| Moringa seeds 1:10 | 100 mg | - |
| Calcium | 200 mg | 25% |

DAILY DOSAGE

3-6 years: 1 gummy

6-12 years: 2 gummies

>12 years: 3 gummies

RECOMMENDED FOR

A multivitamin and multinutrient supplementation for children and adolescents who don't eat enough vegetables and fruits. Suitable for adults too.

INGREDIENTS

Calcium carbonate; Maltitol syrup; Corn starch, Apple (*Malus domestica* L.) fruit d.e. tit. 50% polyphenols; Acerola (*Malpighia glabra* L.) fruit d.e. tit. 50% Vitamin C; Water, Maltitol powder, Raspberry (*Rubus idaeus* L.) d.e. powder; Carrot (*Daucus carota* L.) root d.e. powder; Ficus (*Ficus carica* L.) fruit d.e. 10:1; Moringa (*Moringa oleifera* Lam.) seeds d.e. 1:10; Zinc gluconate; Cholecalciferol (Vitamin D); Sweetener: stevia; Dyes: Strawberry Red, Lemon Yellow, Blue, Kiwi Green; Flavours: Strawberry, Lemon, Raspberry, Apple.

*NRV: Nutrient reference values.



Relax Ashwagandha

Anti-anxiety natural gummies containing Sensoril®, a multi-patented, standardized extract of Ashwagandha (*Withania somnifera*).

cod: 3010

40 gummies - 4g each

Lavender Flavour



vegan

sugar free

gluten free

lactose free

SUPPLEMENT FACTS PER SERVING (1 GUMMY)

| | QTY. | NRV* |
|------------------------------------|--------|------|
| Sensoril® (Withania D.E. tit. 10%) | 200 mg | - |
| of which withanolides | 20 mg | - |
| Hawthorn D.E. 3% vitexin | 100 mg | - |
| L-theanine | 50 mg | - |
| Magnesium | 225 mg | 60% |
| G.a.b.a. | 20 mg | - |
| Vitamin b6 | 1,4 mg | 100% |
| Lavender e.o. | 20 mg | - |

RECOMMENDED USE

Take 1 gummy daily, when needed.

INGREDIENTS

Maltitol syrup, Magnesium gluconate, Starch (Zea Mays L.), Sensoril® (Withania somnifera (L.) Dunal. root D.E. tit. 10% withanolides), Water, Maltitol Powder, Hawthorn (Crataegus laevigata (Poir.) DC.) flowers and seeds D.E. tit. 3% Vitexin, L-Theanine, Gamma-Aminobutyric acid (GABA), Lavender (Lavandula angustifolia Mill.) essential oil, Natural dyes: Shade Strawberry Red, Shade Blue, Lavender Flavor, Sweeteners: Stevia Rebaudiana, Vitamin b6 (pyridoxine hydrochloride).

*NRV: Nutrient reference values.



Gola Manuka

New Zealand Manuka Honey gummies with antibacterial and soothing properties on throat, containing Mauve and Hedge-mustard.

cod: 3011

40 gummies - 4g each

Balsamic Honey Flavour



sugar free

gluten free

lactose free

SUPPLEMENT FACTS PER SERVING (1 GUMMY)

| | QTY. | NRV* |
|--------------------|--------|------|
| Manuka Honey | 150 mg | - |
| Hedge-mustard D.E. | 80 mg | - |
| N-acetylcysteine | 150 mg | - |
| Mauve D.E. | 80 mg | - |
| Eucalyptol | 50 mg | - |

RECOMMENDED USE

Take 1 or 2 gummies daily whenever needed.

INGREDIENTS

Maltitol syrup, Starch (Zea Mays L.), Water, Manuka honey, N-acetylcysteine, Maltitol Powder, Hedge-mustard (Sisymbrium officinale Scop.) flower heads D.E. E/D 1:4 (Hedge-mustard, maltodextrin), Mauve (Malva Sylvestris L.) flowers and seeds D.E. E/D 1:4 (Mauve, maltodextrin), Eucalyptol, Dye: Turmeric, Honey Flavor.

*NRV: Nutrient reference values.





Popito

Funny and effective, Popito supplements will help you fight heavy legs and water retention!



POPITO

Popito

Get rid of water retention!

POPITO supplements will give you a moment of absolute pleasure!

You can freeze the liquid stick and eat it like a popsicle or you can just dilute the liquid in a fresh glass of water! If you prefer gummies, let it melt in your mouth for a few minutes and maximize the absorption of its ingredients.

Thanks to the presence of Cherry and Birch, Popito supplements will help you to get rid of water retention and heavy legs. Both products also contain magnesium and potassium for a perfect hydro saline balance.

Popito

Popito is a dietary supplement containing plant extracts that work on the elimination of excess fluids. It can be useful against water retention, cellulite, swollen and heavy legs.

SUPPLEMENT FACTS PER MAX DAILY DOSAGE (2 STICKS)

QTA.

| | |
|------------------|--------|
| Cherry Stem D.E. | 300 mg |
| Birch D.E. | 300 mg |
| Holy Basil | 150 mg |

RECOMMENDED USE

1 or 2 sticks daily. Freeze the stick and eat it as a popsicle or dilute the liquid in a full glass of water.

SUITABLE FOR

Those who struggle taking pills and for those wanting to feel better by eliminating water retention.

INGREDIENTS (2 STICKS)

Water, magnesium citrate, Birch (Betula Pendula Roth., Betula pub. Ehrh, leaves) D.E. 2.5% flavonoids expressed as hyperoside 300 mg, acidifier: citric acid; Cherry (Prunus cerasus L., stem) D.E. 300 mg, potassium citrate, sacred basil (Ocimum tenuiflorum L., grass) powder 150 mg, dye: concentrated red beet juice; aroma, preservative: potassium sorbate; antioxidant: ascorbic acid; thickener: xanthan gum; sweetener: sucralose.



flavour red fruits

vegan

sugar free

gluten free

lactose free

without artificial dyes

Available in:



Popito Mini Box

Box of 12 sticks

Box of 12 sticks to always carry with you.

cod: 0124

12 stick of 15 ml each

Flavour red fruits



A987853633



Popito Maxi Box

Box of 50 sticks saelable individually

Counter display containing 50 sticks that can be sold one by one.

cod: 0121

50 stick of 15 ml each

Flavour red fruits



A986991709

Popito gummies

Popito Gummies is a gummy supplement containing plant extracts that work on the elimination of excess fluids. It can be useful against water retention, cellulite, swollen and heavy legs.

cod: 0126

60 gommose da 3 g



vegan

sugar free

with edulcorants

gluten free

lactose free

SUPPLEMENT FACTS PER SERVING (1 GUMMY)

QTA.

VNR*

| | | |
|----------------------|--------|---|
| Cherry fruit D.E. | 150 mg | - |
| Birch D.E | 100 mg | - |
| Bromelain 2500 GDU/g | 50 mg | - |

GDU: Gelatin Digestin Units

RECOMMENDED USE

Take 1 or 2 gummies daily, preferably on an empty stomach.

INGREDIENTS

Maltitol syrup; Starch (Zea Mays L.); Cherry (Prunus avium L.) fruit d.e.; Water; Maltitol powder; Birch (Betula Pendula Roth., Betula pub. Ehrh, foglie) d.e. 2,5% flavonoids as hyperosides; magnesium citrate; potassium citrate; Bromelain (from pineapple stem – Ananas comosus L.); dye: carrot and blueberry concentrate; cherry flavour.

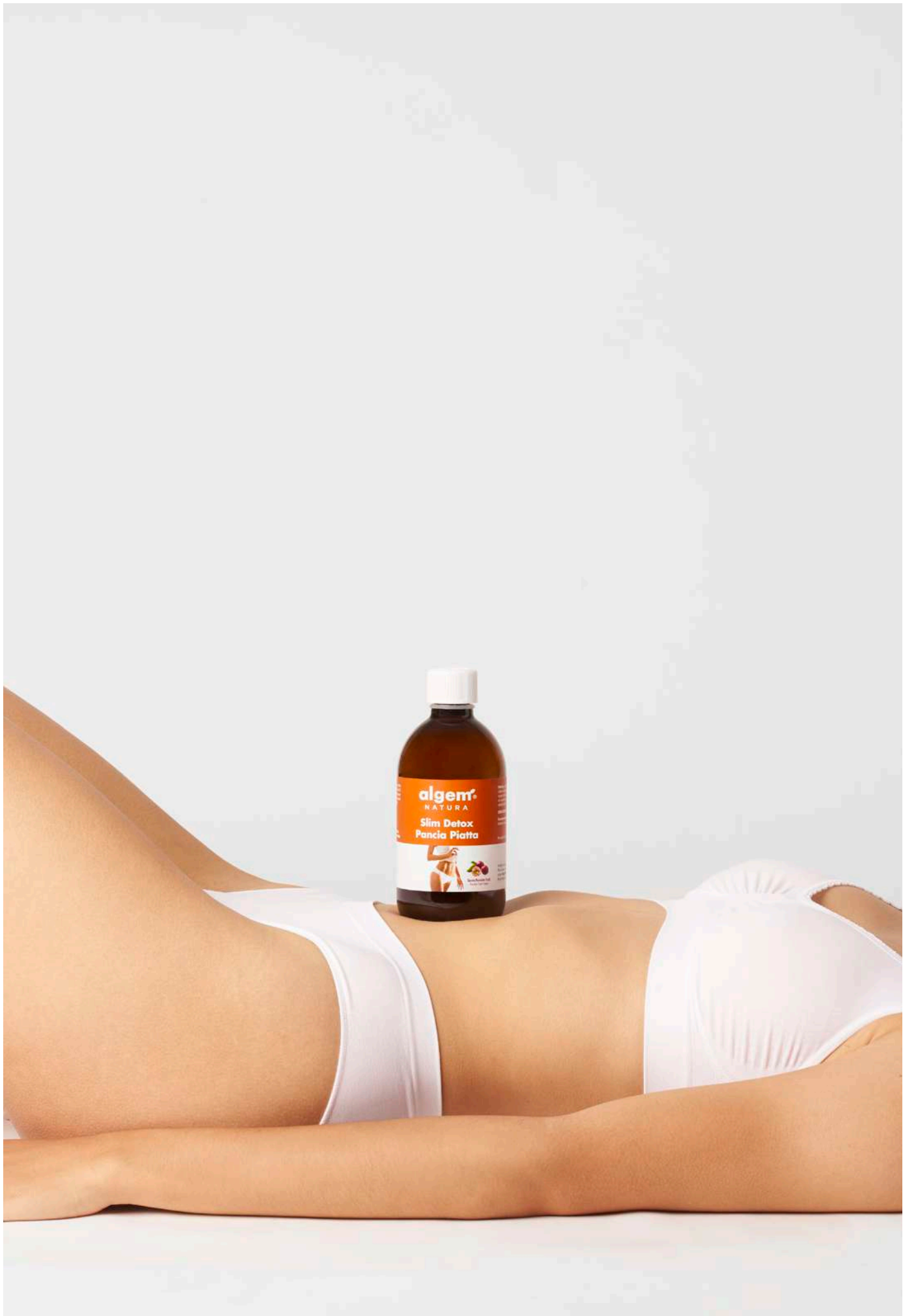
*NRV: Nutrient reference values.





Weight Loss

Losing weight without being on a diet? It is possible! However, it is probably necessary to change some habits and lifestyle, far from the “diet” concept that sometimes sounds like deprivation and demonization of food. Adopting new habits is not easy, that’s why some supplements can be the best choice to help in this mindset shift to a healthier lifestyle.



Slim Detox Pancia Piatta

Slim Detox Pancia Piatta is a supplement containing a mixture of selected plant extracts. It's characterized by the presence of Green Tea which favors the control of body weight and Aloe Vera that promotes digestive and detoxifying functions. Açai, Mangosteen and Noni plant extracts are known for their antioxidant properties against free radicals and therefore help the prevention of tissue aging. Slim Detox Pancia Piatta can facilitate the draining functions of the body and the microcirculation.

cod: 0056

Bottle of 500 ml

Passion Fruit Flavour



vegan

sugar free

gluten free

lactose free

SUPPLEMENT FACT PER SERVING (40 ML)

| | QTY. | NRV* |
|------------------------------|--------|------|
| Aloe Vera gel tit 10% | 10 g | - |
| Green Tea D.E. tit 95% | 120 mg | - |
| Açai D.E. D/E 4:1 | 120 mg | - |
| Mangosteen D.E. tit 10% | 120 mg | - |
| Noni lyophilized fruit juice | 120 mg | - |
| Bilberry D.E. tit 1% | 40 mg | - |

RECOMMENDED USE

Dilute 20 ml of the product in a full glass of water once or twice a day.

INGREDIENTS

Water, Aloe Vera extract (Aloe Barbadensis Mill.) Gel titrated 10% in Polysaccharides, Acidity regulators: Sodium Lactate sol. 60%, Citric Acid, Açai (Euterpe Oleracea M.) fruit D.E. D/E 4:1, Mangosteen (Garcinia Mangostana L.) pulp (fruit) D.E., Noni (Morinda Citrifolia L.) lyophilized fruit juice, Green Tea (Camellia Sinensis L.) leaves D.E. titrated 95% in polyphenols, Bilberry (Vaccinium Myrtillus L.) fruit D.E. titrated 1% in Anthocyanosides, Passion Fruit Aroma, Preservative: Potassium Sorbate, Thickener: Xanthan Gum, Sweetener: Stevia.

*NRV: Nutrient reference values.



Slim Detox

Algem Slim Detox is a supplement in capsules, containing a balanced mixture of plant extracts as Artichoke and Milk Thistle, which promote the body's natural detox functions and the regularization of digestion and liver function.

cod: 0014

30 capsules - 400 mg each



vegan

gluten free

lactose free

SUPPLEMENT FACTS PER SERVING (2 CPS)

| | QTY. | NRV* |
|--------------------------------|--------|------|
| Artichoke D.E. tit 2% | 160 mg | - |
| Dandelion D.E. tit 2% | 160 mg | - |
| Turmeric D.E. 4:1 | 160 mg | - |
| Milk Thistle D.E. E.S. tit 70% | 160 mg | - |
| Burdock D.E.. tit 20% | 80 mg | - |
| Goji D.E. tit 50% | 80 mg | - |

RECOMMENDED USE

Take 1 - 2 capsules daily, at breakfast or with your main meal.

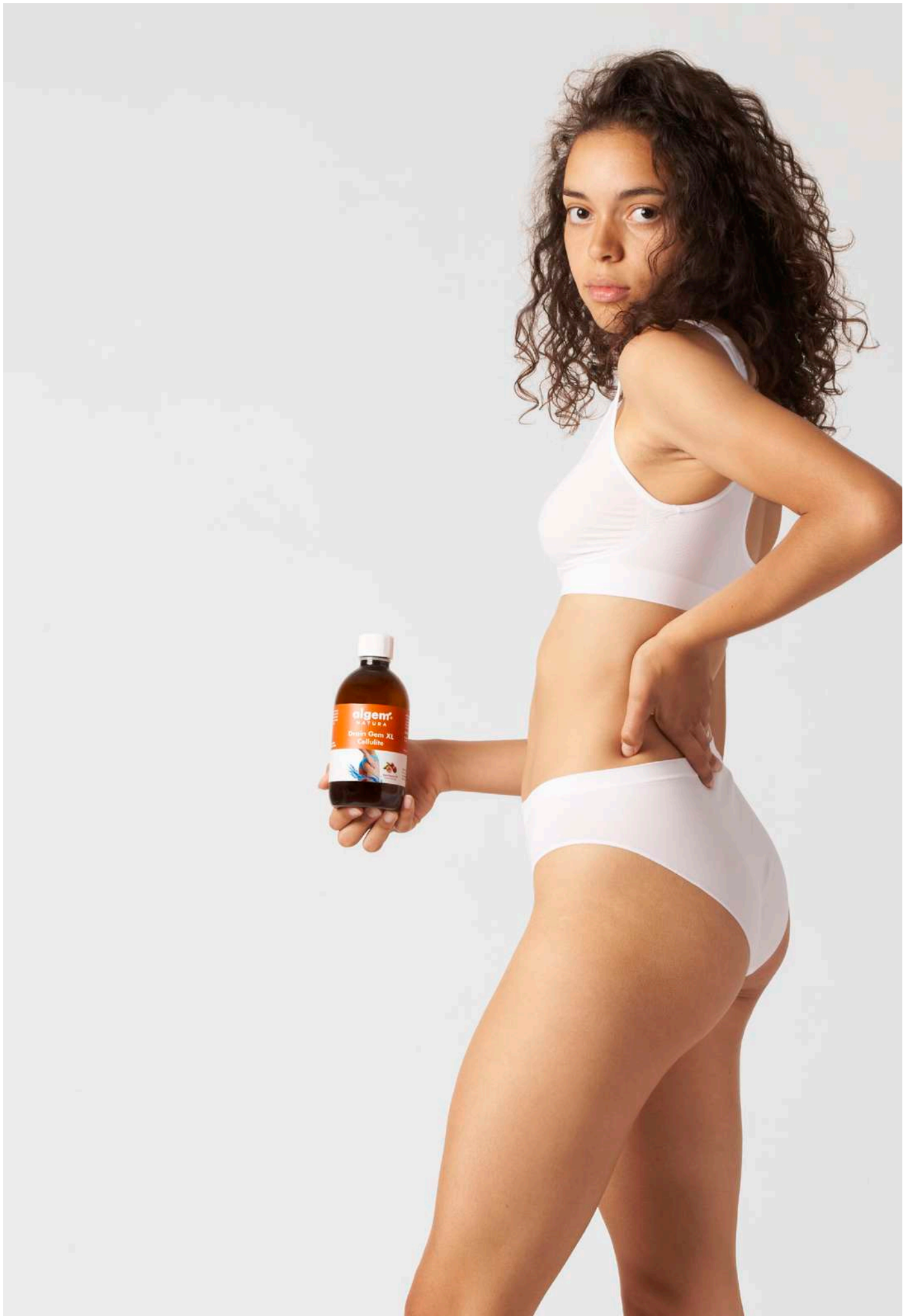
INGREDIENTS

Artichoke (Cynara Scolymus L.) leaves dry extract Tit. 2% in cynarin, Dandelion (Taraxacum Officinale W.) root dry extract Tit. 2% in inulin, Turmeric (Curcuma Longa L.) rhizome dry extract 4:1, Milk Thistle (Silybum Marianum G.) fruits dry extract Tit. 70% in silymarin, Burdock (Arctium Lappa L.) root dry extract Tit. 20% in inulin, Goji (Lycium Barbarum L.) fruits dry extract Tit. 50% in polysaccharides, capsules of plant origin (hypromellose).

*NRV: Nutrient reference values.



A970524563



Drain Gem XL Cellulite

Drain Gem XL Cellulite is a food supplement in liquid form containing a combination of plant extracts with specific active ingredients that help reduce cellulite by improving microcirculation in order to facilitate the elimination of excess fluids. Aloe Vera extract helps detoxifying the organism, Horsetail and Hawkweed favor the drainage of body fluids, Pineapple and Gotu Kola, along with Blueberry, promote microcirculation and help reduce cellulite. Sweet Clover, besides promoting the drainage of body fluids, improves venous circulation. Potassium and Magnesium help maintain normal levels of electrolytes.

COD: 0041

Bottle of 500 ml

Passion Fruit Flavour

SUPPLEMENT FACTS PER SERVING (40 ML)

| | QTY. | NRV* |
|--------------------------------|--------|------|
| Aloe Vera Gel tit 10 % | 8 g | - |
| Ananas D.E. tit 0,3 % | 160 mg | - |
| Centella Asiatica E.S. tit 20% | 160 mg | - |
| Sweet Clover D.E. tit 20 % | 160 mg | - |
| of which coumarin | 32 mg | - |
| Horsetail D.E. tit 7 % | 120 mg | - |
| Hawkweed D.E. tit 1 % | 120 mg | - |
| Blueberry D.E. tit 1 % | 120 mg | - |
| Magnesium | 60 mg | 15% |
| Potassium | 300 mg | 15% |



vegan

sugar free

gluten free

lactose free

RECOMMENDED USE

Dilute 20 ml in a full glass of water once or twice a day or dilute 40 ml in half liter of water.

INGREDIENTS

Water, Aloe Vera Extract (Aloe barbadensis Mill.) Gel tit. 10% polysaccharides, Potassium citrate tribasic, Magnesium citrate tribasic, Acidity regulator: sodium lactate sol. 60%. Lactic acid. Pineapple (Ananas comosus L.) stem tit. 0.3% bromelain, Gotu kola (Centella asiatica L.) aerial parts tit. 20% terpenes, Sweet Clover (Melilotus P. officinalis) flowering tops tit. 20% Coumarin, Horsetail (Equisetum arvense) aerial parts tit. 7% silicon, Hawkweed (Hieracium pilosella L.) aerial parts tit. 1% vitexin, Blueberry (Vaccinium myrtillus L.) fruits tit.1% anthocyanosides, Flavour: Passion Fruit, Preservative: potassium sorbate. Sweetener: Stevia.

*NRV: Nutrient reference values.



Drain Gem XL Cellulite

Drain Gem XL Cellulite is a food supplement in liquid form containing a combination of plant extracts with specific active ingredients that help reduce cellulite by improving microcirculation in order to facilitate the elimination of excess fluids. Aloe Vera extract helps detoxifying the organism, Horsetail and Hawkweed favor the drainage of body fluids, Pineapple and Gotu Kola, along with Blueberry, promote microcirculation and help reduce cellulite. Sweet Clover, besides promoting the drainage of body fluids, improves venous circulation. Potassium and Magnesium help maintain normal levels of electrolytes.

COD: 0081

Bottle of 500 ml

Red Fruits Flavour

SUPPLEMENT FACTS PER SERVING (40 ML)

| | QTY. | NRV* |
|--------------------------------|--------|------|
| Aloe Vera Gel tit 10 % | 8 g | - |
| Ananas D.E. tit 0,3 % | 160 mg | - |
| Centella Asiatica E.S. tit 20% | 160 mg | - |
| Sweet Clover D.E. tit 20 % | 160 mg | - |
| of which coumarin | 32 mg | - |
| Horsetail D.E. tit 7 % | 120 mg | - |
| Hawkweed D.E. tit 1 % | 120 mg | - |
| Blueberry D.E. tit 1 % | 120 mg | - |
| Magnesium | 60 mg | 15% |
| Potassium | 300 mg | 15% |

*NRV: Nutrient reference values.



vegan

sugar free

gluten free

lactose free

RECOMMENDED USE

Dilute 20 ml in a full glass of water once or twice a day or dilute 40 ml in half liter of water.

INGREDIENTS

Water, Aloe Vera Extract (Aloe barbadensis Mill.) Gel tit. 10% polysaccharides, Potassium citrate tribasic, Magnesium citrate tribasic, Acidity regulator: sodium lactate sol. 60%. Lactic acid. Pineapple (Ananas comosus L.) stem tit. 0.3% bromelain, Gotu kola (Centella asiatica L.) aerial parts tit. 20% terpenes, Sweet Clover (Melilotus P. officinalis) flowering tops tit. 20% Coumarin, Horsetail (Equisetum arvense) aerial parts tit. 7% silicon, Hawkweed (Hieracium pilosella L.) aerial parts tit. 1% vitexin, Blueberry (Vaccinium myrtillus L.) fruits tit.1% anthocyanosides, Flavour: Red fruits, Preservative: potassium sorbate. Sweetener: Stevia.



Drain Gem XL Tabs

Drain Gem XL Tabs is a supplement in tablets which promotes the elimination of excess liquids. With magnesium and potassium that promote hydrosaline balance.

cod: 0074

45 tablets - 1 g each

SUPPLEMENT FACTS PER SERVING (2 CPR)

| | QTY. | NRV* |
|----------------------------|---------|------|
| Lespedeza D.E. tit. 4% | 300 mg | - |
| of which rutin | 12 mg | - |
| Pilosella D.E. tit. 1% | 300 mg | - |
| of which vitexin | 3 mg | - |
| Bearberry D.E. tit. 10% | 150 mg | - |
| of which arbutin | 15 mg | - |
| Green Tea D.E. | 150 mg | - |
| of which polyphenols | 147 mg | - |
| of which EGCG | 60 mg | - |
| Magnesium | 56,3 mg | 15% |
| Orthosiphon D.E. tit. 0,2% | 100 mg | - |
| of which sinensetine | 0,2 mg | - |



vegan

gluten free

lactose free

RECOMMENDED USE

Take 2 tablets daily, preferably in the morning.

INGREDIENTS

Bulking agent: microcrystalline cellulose; lespedeza aerial parts (*Lespedeza capitata* Mich.) d.e. tit. 4% in rutin, pilosella whole plant (*Hieracium pilosella* L.) d.e. titrated to 1% in vitexin, bearberry leaves (*Arctostaphylos uva-ursi* (L.) Spreng.) d.e. titrated to 10% in arbutin, Green tea (*Camellia sinensis* L. Kuntze) leaves d.e. tit. 98% in polyphenols and 40% in epigallocatechine gallate (EGCG), marine magnesium (magnesium oxide, magnesium hydroxide, magnesium carbonate, magnesium sulfate and magnesium chloride, total magnesium content 45%), orthosiphon leaves (*Orthosiphon stamineus* Benth) d.e. titrated to 0.2% in sinensetine, potassium carbonates, anti-caking agents: magnesium salts of fatty acids and silicon dioxide.

*NRV: Nutrient reference values.



A975877414



XL Bruciagrassi

XL bruciagrassi is a liquid food supplement containing Guinea Pepper that stimulates thermogenesis, Guar and Griffonia that promote appetite control and plant extracts that are active on weight control.

cod: 0100

Bottle of 500 ml

Peach Flavour



vegan

sugar free

gluten free

lactose free

SUPPLEMENT FACTS (30 ML)

QTY.

NRV*

| | | |
|---------------------------------|--------|---|
| Griffonia D.E.25% tit. in 5-HTP | 450 mg | - |
| Guar tit. 80% | 240 mg | - |
| Orthosiphon D.E. tit. 1.5% | 450 mg | - |
| Guinea Pepper | 210 mg | - |
| Mate D.E. tit. 4% | 450 mg | - |
| Nopal Powder | 300 mg | - |
| Phaseolamin | 300 mg | - |
| Cassia Nomame D.E. tit. 8% | 360 mg | - |

RECOMMENDED USE

Dilute 1 or 2 measuring cups (30 ml) in water, once daily. Take preferably before your main meal.

INGREDIENTS

Griffonia D.E. (Griffonia simplicifolia (DC)) 25% tit. in 5-HTP, Guar (Cyamopsis tetragonoloba) tit. 80% in galactomannan, Orthosiphon (Orthosiphon aristatus), Guinea Pepper (Pepe malagueta), Mate D.E. (Ilex paraguariensis) tit. 4% in caffeine, Nopal (Opuntia ficus indica) powder, Phaseolamin (Phaseolus vulgaris), Cassia Nomame D.E. (Cassia Mimosoides L.) tit. 8% Water, Stevia rebaudiana. Stabilizing agent: Glycerol, Flavour: Peach.

*NRV: Nutrient reference values.



Lino-Carnitine Diet

Lino-Carnitine Diet is a supplement containing Açai, Matè, Apple cider vinegar, Flaxseed and L-carnitine that promote body weight control, the reduction of water retention and fat metabolism.

cod: 0090

45 Capsules - 610 mg each



vegan

gluten free

lactose free

SUPPLEMENT FACTS PER SERVING (2 CPS)

| | QTY. | NRV* |
|--------------------------------|--------|------|
| Açai D.E. tit. 10% | 300 mg | - |
| Dehydrated apple cider vinegar | 200 mg | - |
| Matè D.E. tit. 4% | 200 mg | - |
| of which caffeine | 8 mg | - |
| L-carnitine tartrate | 200 mg | - |
| Flaxseed D.E. tit. 25% | 100 mg | - |

RECOMMENDED USE

Take 2 capsules daily, preferably before breakfast and lunch.

INGREDIENTS

Açai (*Euterpe oleracea* Mart.) fruits D.E. tit. 10% polyphenols; dehydrated apple cider vinegar; Matè (*Ilex Paraguariensis* A. St.-Hil.) leaves D.E. tit. 4% in caffeine; L-carnitine tartrate; hydroxypropyl methylcellulose, flaxseed (*Linum usitatissimum* L.) D.E. tit. 25% in linolenic acid. Anti-caking agents: magnesium salts of fatty acids and silicon dioxide.

*NRV: Nutrient reference values.



Eidos Slim Shape

Eidos Slim Shape is a food supplement containing vegetarian proteins and dry extracts of Griffonia and Galega:

- Proteins: they contribute to the maintenance of normal muscles and normal bones.
- Griffonia: promotes hunger control.
- Galega: promotes carbohydrate metabolism and body weight balance.

cod: 0079

Jar of 400g

Cocoa Flavour

SUPPLEMENT FACTS PER MAX DAILY DOSAGE (20 G)

QTY.

NRV*

| Energy | 318,92 kJ/ 75,52 kcal | |
|--------------------------------|--------------------------|---|
| Fats | 1,4 g | - |
| of which saturated fatty acids | 0,57 g | - |
| Carbohydrates | 9,27 g | - |
| of which sugars | 7,64 g | - |
| Fiber | 0,58 g | - |
| Protein | 6,17 g | - |
| Salt | 0,048 g | - |
| Griffonia D.E. tit 20% | 250 mg | - |
| of which 5-HTP | 50 mg | - |
| Galega D.E. | 250 mg | - |



vegan

gluten free

lactose free

RECOMMENDED USE

Mix 2 measuring cups (20 g) of product in 250 - 300 ml of water or other suitable liquid once a day, shake vigorously.

INGREDIENTS

Fructose; Rice protein; Lupine protein; Dutch cocoa powder; Thickener: sodium alginate; Griffonia (*Griffonia simplicifolia* (DC.) BailL) Seed d.e. tit. 20% in 5-hydroxytryptophan; Galega (*Galega officinalis* L.) grass with flowers d.e. 4/1; Cocoa aroma; Anti-caking agent: Silicon dioxide.

*NRV: Nutrient reference values.



Eidos Slim Shape

Eidos Slim Shape is a food supplement containing vegetarian proteins and dry extracts of Griffonia and Galega:

- Proteins: they contribute to the maintenance of normal muscles and normal bones.
- Griffonia: promotes hunger control.
- Galega: promotes carbohydrate metabolism and body weight balance.

cod: 0080

Jar of 400g

Vanilla Flavour

TENORI MEDI PER PORZIONE (20 G)

QTA.

VNR*

| | | 311,6 kJ 73,68 kcal |
|-------------------------------|--------|------------------------|
| Fats | 0,87 g | - |
| of wich saturated fatty acids | 0,16 g | - |
| Carbohydrates | 10,2 g | - |
| of which sugars | 8,83 g | - |
| Fiber | 0,67 g | - |
| Protein | 5,92 g | - |
| Salt | 3,5 mg | - |
| Griffonia D.E. tit 20% | 250 mg | - |
| of which 5-HTP | 50 mg | - |
| Galega D.E. | 250 mg | - |



vegan

gluten free

lactose free

RECOMMENDED USE

Mix 2 measuring cups (20 g) of product in 250 - 300 ml of water or other suitable liquid once a day, shake vigorously.

INGREDIENTS

Fructose; Rice protein; Lupine protein; Thickener: sodium alginate; Griffonia (Griffonia simplicifolia (DC.) Baill.) Seed d.e. tit. 20% in 5-hydroxytryptophan; Galega (Galega officinalis L.) grass with flowers d.e. 4/1; Vanilla aroma; Anti-caking agent: Silicon dioxide.

*NRV: Nutrient reference values.



i

CURCUMIN, WHAT IS IT?

Turmeric is one of the most studied spices in the world. In particular, its main active ingredient known as "curcumin" has important biological and pharmacological properties as antioxidant, detox, anti-inflammatory and neuroprotective. It is also studied and used in treatments against cardiovascular disorders.



Piperina & Curcuma

Piperina & Curcuma is a supplement in capsules containing dry extracts of Pepper that has tonic properties and Turmeric which favors the functionality of the digestive system, liver function and has antioxidant properties.

cod: 6011

60 capsules - 400 mg each



vegan

gluten free

lactose free

SUPPLEMENT FACTS PER SERVING (1 CPS)

QTY.

NRV*

Long pepper D.E. tit 90%

300 mg

-

Turmeric D.E. 4:1

300 mg

-

RECOMMENDED USE

Take 1 - 2 capsules daily, preferably before meals.

INGREDIENTS

Long Pepper (Piper Longum) fruit dry extract Tit 90% piperine, Turmeric (Curcuma Longa L.) root dry extract 4:1. Bulking agent: maltodextrin. Anti-caking agent: micronized silica. Capsules of plant origin (hypromellose).

*NRV: Nutrient reference values.



Garcinia Cambogia

Garcinia Cambogia is a supplement in tablets that supports fat metabolism, the balance of body weight and helps to control hunger.

cod: 6000

60 tablets - 650 mg each



vegan

gluten free

lactose free

SUPPLEMENT FACTS PER SERVING (2 TABLETS)

QTY.

NRV*

Garcinia Cambogia D.E.

800 mg

-

tit. 60% HCA

480 mg

-

RECOMMENDED USE

Take 1 - 2 tablets daily, preferably before meals.

INGREDIENTS

Garcinia Cambogia (Garcinia Cambogia D.) fruits dry extract
Tit 60% Hca, bulking agents: maltodextrin, microcrystalline cellulose, isomalt, anti-caking agents: vegetable magnesium stearate, micronized silica.

*NRV: Nutrient reference values.



Manuka Honey

We all know that honey has many beneficial properties.

However there is one specific type of honey known as "Manuka Honey" from the plant *Leptospermum Scoparium* originally from New Zealand, that has incredible properties.

In 2008 Professor Thomas Henle research group from Dresden University, discovers the Methylglyoxal (MGO), responsible for the anti-bacterial activity of Manuka Honey.

Manuka Honey is the only food in which methylglyoxal is naturally occurring in high concentration. Our honey is from New Zealand and is available all year round.



Manuka Sed Tosse

Manuka Sed Tosse is a supplement containing Manuka Honey and plant extracts that promote the function of the respiratory system in case of dry or wet cough.

| | |
|---------------|------------------|
| cod: 0027 | Bottle of 200 ml |
| Lemon Flavour | |



| | |
|-------------|--------------|
| gluten free | lactose free |
|-------------|--------------|

SUPPLEMENT FACTS PER SERVING (30 ML)

| | QTY. | NRV* |
|----------------------|--------|------|
| Manuka Honey | 915 mg | - |
| Marshmallow D.E. 4:1 | 900 mg | - |
| Plantain E.S. 4:1 | 450 mg | - |
| Thyme E.S. 1:4 | 450 mg | - |
| Grapefruit E.S. 4:1 | 180 mg | - |

RECOMMENDED USE

The recommended dosage is a measuring cup of 5/10 ml, two or three times a day. As this is a natural product, sediment may form at the bottom of the bottle.

INGREDIENTS

Water, Fructose, Acidity regulator: Sodium lactate sol. 60%, Manuka Honey, Marshmallow (*Althea officinalis*) root dry extract tit. 4:1, Thyme (*Thymus vulgaris*) leaves dry extract tit. 1: 4, Plantain (*Plantago major* L.) plant dry extract tit. 4: 1, Grapefruit (*Citrus x Paradisi Macfad*) seed dry extract tit. 4:1, Acidity regulator: Vitamin C (Ascorbic Acid), Preservative: potassium sorbate. Flavour: Lemon.

*NRV: Nutrient reference values.



Manuka Sed Tosse Junior

Manuka Sed Tosse Junior is a supplement for children containing Manuka Honey and plant extracts that promote the function of the respiratory system in case of dry or wet cough.

cod: 0028

Bottle of 200 ml

Red Fruits Flavour



gluten free

lactose free

SUPPLEMENT FACTS PER SERVING (30 ML)

| | QTY. | NRV* |
|--------------------------------|--------|------|
| Manuka Honey | 915 mg | - |
| Marshmallow D.E. 4:1 | 375 mg | - |
| Adhatoda Vasica D.E. tit 0,5 % | 300 mg | - |
| Plantain D.E. 4:1 | 150 mg | - |
| Thyme D.E. 1:4 | 150 mg | - |

RECOMMENDED USE

The recommended dosage is a measuring cup of 5/10 ml, two or three times a day. As this is a natural product, sediment may form at the bottom of the bottle.

INGREDIENTS

Water, Fructose, Sodium lactate sol. 60%, Manuka Honey, Marshmallow (*Althea officinalis*) root dry extract tit. 4:1, Adhatoda vasica (*Adhatoda vasica* nees) leaves dry extract tit 0.5% alkaloids, Thyme (*Thymus vulgaris*) leaves dry extract tit. 1:4, Plantain (*Plantago major* L.) plant dry extract tit. 4:1, Acidity regulator: Vitamin C (Ascorbic Acid), Flavour red fruits, Preservative: potassium sorbate.

*NRV: Nutrient reference values.



Manuka Spray Gola

Manuka Spray Gola is a supplement containing Manuka Honey, Resveratrol, Beta Glucan, Sodium Hyaluronate and grapefruit seed extract. Moreover, the presence of Propolis HRD®, promotes the well-being of the nose and throat and the body's natural defenses.

cod: 0029

Bottle of 30 ml

Peppermint and Lemon Flavour



gluten free

lactose free

SUPPLEMENT FACTS FOR 100 ML

| | QTY. | NRV* |
|------------------------|---------|------|
| Manuka honey | 900 mg | - |
| Beta Glucan | 1000 mg | - |
| Polygonum D.E. tit 98% | 102 mg | - |
| of which Resveratrol | 100 mg | - |
| Sodium Hyaluronate | 90 mg | - |
| Propolis HRD® | 20 mg | - |
| Grapefruit D.E. 4:1 | 20 mg | |

RECOMMENDED USE

Two sprays, two or three times a day.

INGREDIENTS

Water, Fructose, Acidity regulator: Sodium lactate sol. 60%, Manuka Honey, Beta Glucan, Acidity regulator: citric acid, Preservative: potassium sorbate, Polygonum cuspidatum root dry extract tit 98% in resveratrol, Sodium Hyaluronate, Propolis HRD® tit. 10% in galangin and 2% quercetin, Grapefruit (Citrus x Paradisi Macfad) seed dry extract tit. 4:1, essential oils: peppermint and lemon.

*NRV: Nutrient reference values.



Manuka Spray Gola Junior

Manuka Spray Junior is a supplement for children containing Manuka Honey, Resveratrol, Beta Glucan and Sodium Hyaluronate. The honey comes from specific New Zealand's remote areas, has a methylglyoxal index of 500 and an activity of 15+, corresponding to a high antibacterial activity.

cod: 0030

Bottle of 30 ml

Strawberry Flavour



gluten free

lactose free

SUPPLEMENT FACTS FOR 100 ML

| | QTY. | NRV* |
|------------------------|--------|------|
| Manuka honey | 900 mg | - |
| Beta Glucan | 500 mg | - |
| Polygonum D.E. tit 98% | 51 mg | - |
| of which Resveratrol | 50mg | - |
| Sodium Hyaluronate | 45 mg | - |
| Propolis HRD® | 10 mg | - |

RECOMMENDED USE

Two sprays, two or three times a day.

INGREDIENTS

Water, Fructose, Acidity regulator: Sodium lactate sol. 60%, Manuka Honey, Beta Glucan, Acidity regulator: citric acid, Preservative: potassium sorbate, Polygonum cuspidatum root dry extract tit 98% in resveratrol, Sodium Hyaluronate, Propolis HRD® tit. 10% in galangin and 2% quercetin, Flavour: strawberry.

*NRV: Nutrient reference values.



Manuka Gola Sed

Manuka Gola Sed is a supplement in tablets containing Manuka essential oil and plant extracts that can protect and soothe the oropharyngeal mucosa in case of sore throat. Essential oils of Mint and Eucalyptus have balsamic properties.

cod: 0054

20 tablets dof 1 g

Peppermint and Lemon Flavour



vegan

gluten free

lactose free

SUPPLEMENT FACTS FOR SERVING (2 TABLETS)

| | QTY. | NRV* |
|------------------------|--------|------|
| Sundew E.S. 1/4 | 100 mg | - |
| Mallow E.S. 1/4 | 100 mg | - |
| Marigold E.S. 1/4 | 100 mg | - |
| Aloe gel polvere 200:1 | 20 mg | - |
| Manuka E.O. | 4 mg | - |
| Mint E.O. | 2 mg | - |
| Eucalyptus E.O. | 2 mg | - |

RECOMMENDED USE

Take 1 or 2 tablets daily.

INGREDIENTS

Sweetener: xylitol, sorbitol; Marigold flowers (*Calendula officinalis* L.) dry extract 1:4, sundew herbal flower (*Drosera rotundifolia* L.) dry extract 1:4, mallow flowers and leaves (*Malva sylvestris* L.) dry extract 1:4; Anti-caking agents: magnesium salts of fatty acids and silicon dioxide; Aloe vera gel (*Aloe vera* L.) 200:1 powder, Manuka essential oil, Eucalyptus (*Eucalyptus Globulus* Labill.) Essential oil, mint (*Menta x Piperita* L.) essential oil; Sweetener: sucralose.

*NRV: Nutrient reference values.



i

**MANUKA HONEY,
AN ALLY FOR YOUR
IMMUNE SYSTEM**

Methylglyoxal (MGO) is the main active ingredient of Manuka Honey. MGO has important anti-microbial properties. Moreover, thanks to the association with other molecules contained in this honey, it is capable of stimulating some immune system cells production during bacterial and viral infections.



Manuka Immuno Plus

Manuka Immuno Plus is a supplement containing Dog Rose extracts with restorative action, Manuka Essential Oil for the upper respiratory tract normal function, in addition Elderberry and Vitamin D that contribute to the normal function of the immune system.

| | |
|----------------|------------------------|
| cod: 0096 | 15 sachets - 4,5g each |
| Orange Flavour | |



| | | |
|------------|-------------|--------------|
| sugar free | gluten free | lactose free |
|------------|-------------|--------------|

SUPPLEMENT FACTS PER SERVING (1 SACHET)

| | QTY. | NRV* |
|---------------------------|---------|-------|
| Dog rose D.E. tit. 70% | 1430 mg | - |
| of which vitamin C | 1000 mg | 1250% |
| Elderberry D.E. tit. 0,3% | 500 mg | - |
| of which flavonoids | 1,5 mg | - |
| Manuka E.O. | 1 mg | - |
| Vitamin D | 50 µg | 1000% |

RECOMMENDED USE

Take 1 sachet diluted in 150 - 200 ml of water.

INGREDIENTS

Dog Rose (*Rosa Canina* L.) fruit D.E. tit. 70% in Vitamin C; Bulking Agent: Maltodextrin; Elderberry (*Sambucus nigra* L.) flower E.S. tit. 0.3% in flavonoids; Sweetener: Erythritol; Acidifier: Citric Acid; Acidity Regulator: sodium hydrogen carbonate; Orange Flavour; Bulking Agent: silicon dioxide; Vitamin D (Cholecalciferol); Sweetener: Steviol glycosides; Natural dye: Beta-carotene; Manuka (*Leptospermum scoparium* J.R. Forst & G. Forst.) essential oil.

*NRV: Nutrient reference values.



Manuka Ricostituente Forte

Manuka Ricostituente Forte is a supplement containing Manuka essential oil and honey in association with plant extracts and vitamins useful in case of lack of energy or flu-related fatigue. Moreover, Manuka honey has antibacterial activity.

cod: 0052

10 vials - 10 ml each

Lemon Flavour

SUPPLEMENT FACTS PER SERVING (20 ML)

| | QTY. | NRV* |
|--------------------------------|---------|------|
| Manuka honey | 1000 mg | - |
| Acacia honey | 1000 mg | - |
| Rose D.E. tit 70 % | 230 mg | - |
| of which Vitamin C | 160 mg | 200% |
| Royal jelly | 200 mg | - |
| of which 10-HDA | 8 mg | - |
| Eleutherococcus | 200 mg | - |
| of which eleutherosides | 1,6 mg | - |
| Manuka E.O. | 2 mg | - |
| Pantothenate calcium (Vit. B5) | 12 mg | 200% |
| Riboflavin (Vit. B2) | 2,8 mg | 200% |
| Vitamin D | 20 µg | 400% |
| Vitamin B12 | 5 µg | 200% |



gluten free

lactose free

RECOMMENDED USE

Adults: 1 or 2 vials daily.
Children: 1 vial daily (with water, if preferred).

INGREDIENTS

Water, Fructose, Manuka honey, Acacia honey; stabilizer: glycerol; Dog Rose fruits (*Rosa canina* L.) dry extract tit. 70% vitamin C, royal jelly lyophilized powder 4% in 10-HDA, Eleutherococcus root (*Eleutherococcus senticosus* (Rupr. et Maxim.) Maxim (*Acanthopanax senticosus* (Rupr. et Maxim.) Harms)) dry extract tit. 0.8% in eleutherosides; acidifier: citric acid; preservative: potassium sorbate; flavour, vitamin B5 (Calcium Pantothenate), vitamin B2 (riboflavin), manuka (*Leptospermum scoparium*) essential oil, vitamin D3 (Cholecalciferol), vitamin B12 (Cyanocobalamin).

*NRV: Nutrient reference values.



Manuka Flu Relief Urto

Manuka Flu Relief Urto is a food supplement containing Manuka essential oil, Vitamin C and Zinc with plant extracts of White Willow, Rhodiola and Andrographis for the body's natural defenses and the normal function of the upper respiratory tract.

cod: 0089

15 Capsules of 600 mg



vegan

gluten free

lactose free

SUPPLEMENT FACTS PER SERVING (3 CPS)

| | QTY. | NRV* |
|----------------------------|--------|------|
| Andrographis D.E. tit. 10% | 500 mg | - |
| of which andrographolides | 50 mg | - |
| White Willow D.E. tit. 15% | 500 mg | - |
| of which salicin | 75 mg | - |
| Rhodiola D.E. tit. 3% | 150 mg | - |
| of which salidroside | 4,5 mg | - |
| Vitamin C | 120 mg | 150% |
| Zinc | 15 mg | 150% |
| Manuka E.O. | 3 mg | - |

RECOMMENDED USE

Take 3 capsules daily during main meals.

INGREDIENTS

Andrographis (*Andrographis paniculata* (Burm. f. Nees) summit D.E. Tit. 10% in andrographolides; White Willow (*Salix alba* L.) bark of the branches D.E. Tit. 15% in salicin; Hydroxypropyl methylcellulose; Vitamin C (L-Ascorbic acid); Rhodiola (*Rhodiola rosea* L.) root D.E. Tit. 3% in salidroside; Zinc gluconate; Bulking agent: Maltodextrin; Anti-caking agents: Silicon dioxide; Magnesium salts of fatty acids; Manuka (*Leptospermum scoparium* J. R. Forst. & G. Forst.) essential oil.

*NRV: Nutrient reference values.



Manuka Flu Relief

Manuka Flu Relief is a supplement in liquid form containing Manuka honey and plant extracts that promote respiratory tract wellbeing in case of cold and flu. It must be diluted with hot or cold water. The combination of Manuka essential oil and tea tree essential oil confers the product antimicrobial properties.

cod: 0053

Bottle of 50 ml

Peppermint Flavour



gluten free

lactose free

SUPPLEMENTS FACTS PER SERVING (5 ML)

| | QTY. | NRV* |
|-----------------------|--------|------|
| Manuka honey | 200 mg | - |
| Elder D.E. tit 10% | 100 mg | - |
| of which anthocyanins | 10 mg | - |
| Manuka E.O. | 3 mg | - |
| Eucalyptus E.O. | 2 mg | - |
| Tea tree E.O. | 2 mg | - |

RECOMMENDED USE

Dilute 5 ml (two teaspoons) of product with one glass of hot or cold water. Add sweetener if you wish. As this is a natural product, sediment may form at the bottom of the bottle. SHAKE BEFORE USE.

INGREDIENTS

Water, Fructose, stabilizer: glycerol; Manuka Honey, Elder fruits (*Sambucus nigra* L.) dry extract tit. 10% anthocyanins; acidifier: citric acid; preservative: potassium sorbate; flavor; manuka (*Leptospermum scoparium* J.R.Forst. & Myrtaceae G.Forst.) essential oil, eucalyptus (*Eucalyptus Globulus* Labill.) essential oil, tea tree (*Melaleuca Alternifolia* Chell) essential oil.

*NRV: Nutrient reference values.





i

**MANUKA HONEY, GASTRITIS
AND ACID REFLUX.**

The anti-bacterial action combined with anti-inflammatory properties of Manuka Honey, make them a useful product against gastrointestinal problems, thanks to the presence of phenols and flavonoids. An oral administration is often suggested in case of gastritis, reflux, gastric ulcer and other related digestive problems.

Miele di Manuka

Manuka Honey 100 MGO
Origin: New Zealand

cod: 0071

Jar of 250 g



SUPPLEMENT FACTS FOR 100 G

QTY. NRV*

| | QTY. | NRV* |
|-----------------|--------|----------------------|
| Energy | | 326 Kcal/ 1360 KJ |
| Carbohydrates | 80,0 g | - |
| of which sugars | 80,0 g | - |
| Fats | 0 g | - |
| Protein | 0 g | - |
| Fiber | 0 g | - |
| Salt | 0 g | - |

RECOMMENDED USE

Take one or two tablespoons of Manuka Honey daily.

*NRV: Nutrient reference values.



Manuka Oral Complex Gel

Manuka Oral Complex Gel is a food supplement containing Manuka Honey and Manuka essential oil which have antimicrobial and anti-inflammatory properties. The product contains Aloe, Malva which has a soothing effect (oropharyngeal mucosa) and Tea Tree essential oil.

cod: 0066

15 Stick - 7 ml each

Peppermint Flavour



sugar free

gluten free

lactose free

SUPPLEMENT FACTS PER SERVING (2 STICK)

| | QTY. | NRV* |
|--------------------------|--------|------|
| Aloe gel tit. 10% | 1,5 g | - |
| of which polysaccharides | 150 mg | - |
| Malva D.E. 4:1 | 750 mg | - |
| Manuka honey | 500 mg | - |
| Sodium Hyaluronate | 90 mg | - |
| Tea Tree E.O. | 6 mg | - |
| Manuka E.O. | 6 mg | - |

RECOMMENDED USE

Take 1 or 2 sticks daily as needed.
Dissolve the gel directly in the mouth.

INGREDIENTS

Water; Aloe (Aloe vera L.) gel sine cute tit. 10% in polysaccharides; Acidifier: citric acid; Malva (Malva sylvestris L.) leaves D.E. 4:1; Manuka honey; Thickener: sodium alginate; Acidity regulator: sodium lactate; Sodium Hyaluronate; Preservative: potassium sorbate; Aroma; Tea Tree (Melaleuca alternifolia Cheel) essential oil; Manuka (Leptospermum scoparium J. R. Forst. & G. Forst.) essential oil; Sweetener: Sucralose.

*NRV: Nutrient reference values.



Manuka Gastro HP

Manuka Gastro HP is a food supplement containing Manuka Honey which has antimicrobial, healing and anti-inflammatory properties. Turmeric promotes the function of the digestive system whereas Althea has a soothing effect.

cod: 0065

15 Stick - 10 ml each



sugar free

gluten free

lactose free

SUPPLEMENT FACTS FOR 1 STICK

| | QTY. | NRV* |
|------------------|--------|------|
| Althea D.E. 4/1 | 750 mg | - |
| Manuka honey | 500 mg | - |
| Curcuma D.E. 4:1 | 250 mg | - |

RECOMMENDED USE

Take 1 stick daily, preferably at night after dinner.

INGREDIENTS

Water; Althea (*Althæa officinalis* L.) root D.E. 4:1; Acidifier: citric acid; Manuka honey; Curcuma (*Curcuma longa* L.) D.E. 4:1; Thickener: sodium alginate; Preservative: potassium sorbate; Acidity regulator: sodium lactate; Aroma. Sweetener: Sucralose.

*NRV: Nutrient reference values.



Manuka Coli Act

Manuka Coli Act is a food supplement containing artichoke and fennel that promote digestive function and the elimination of intestinal gas. Manuka essential oil has antimicrobial and anti-inflammatory properties whereas Passion Flowers promotes regular gastrointestinal motility and relaxation.

cod: 0064

45 capsules - 500 mg each



vegan

gluten free

lactose free

SUPPLEMENT FACTS PER SERVING (3 CPS)

| | QTY. | NRV* |
|------------------------------|----------|------|
| Artichoke D.E. tit 2,5% | 500 mg | - |
| of which chlorogenic acid | 12,5 mg | - |
| Fennel D.E. tit 1% | 375 mg | - |
| of which essential oil | 3,75 mg | - |
| Passion flower D.E. tit 3,5% | 333 mg | - |
| of which vitexin | 11,66 mg | - |
| Manuka E.O. | 6 mg | - |

RECOMMENDED USE

Take 2 - 3 capsules daily, at breakfast or before your main meals.

INGREDIENTS

Artichoke (*Cynara scolymus* L.) leaves D.E. tit. 2.5% chlorogenic acid; Fennel (*Foeniculum vulgare* Mill.) Fruits D.E. tit. 1% essential oil; Passion Flowers (*Passiflora incarnata* L.) grass with flowers D.E. tit. 3.5% vitexin; hydroxypropyl methylcellulose; Maltodextrin; Anti-caking agents: silicon dioxide, magnesium salts of fatty acids; Manuka (*Leptospermum scoparium* J. R. Forst. & G. Forst.) essential oil.

*NRV: Nutrient reference values.



Manuka Activ Em

Manuka Activ Em is a dietary supplement containing Diosmin and plant extracts including Butcher's-broom and Yellow Sweet Clover which promotes venous circulation (hemorrhoidal plexus function). Manuka essential oil has antimicrobial and anti-inflammatory properties.

cod: 0063 30 capsule - 500 mg each



vegan gluten free lactose free

SUPPLEMENT FACTS PER SERVING (2 CPS)

| | QTY. | NRV* |
|-----------------------------------|--------|------|
| Diosmin | 300 mg | - |
| Butcher's-broom D.E. tit 10% | 200 mg | - |
| of which ruscogenin | 20 mg | - |
| Yellow Sweet Clover D.E. tit. 20% | 25 mg | - |
| of which coumarin | 5 mg | - |
| Manuka E.O. | 4 mg | - |

RECOMMENDED USE

Take 2 capsules daily for the first 5 days and 1 capsule daily for the next 20 days

INGREDIENTS

Diosmin; Maltodextrin; Butcher's-broom (*Ruscus aculeatus* L.) root D.E. tit. 10% ruscogenin; hydroxypropyl methylcellulose; Yellow Sweet Clover (*Melilotus officinalis* Pallas) grass with flowers D.E. tit. 20% in coumarin; Anti-caking agents: silicon dioxide, magnesium salts of fatty acids; Manuka (*Leptospermum scoparium* J. R. Forst. & G. Forst.) essential oil.

*NRV: Nutrient reference values.



Manuka Uri Len

Manuka Uri Len is a food supplement containing D-mannose, Manuka essential oil and plant extracts of Bearberry, Goldenrod and Cranberry that help urinary tract function.

cod: 0087

10 sachets - 3 g each

Red Fruits Flavour



vegan

sugar free

gluten free

lactose free

SUPPLEMENT FACTS FOR 1 SACHET

| | QTY. | NRV* |
|----------------------------|--------|------|
| D-Mannose | 500 mg | - |
| Bearberry D.E. tit 20% | 250 mg | - |
| of which arbutin | 50 mg | - |
| Cranberry D.E. tit. 25% | 100 mg | - |
| of which proanthocyanidins | 25 mg | - |
| Goldenrod D.E. 4/1 | 100 mg | - |
| Manuka E.O. | 1 mg | - |

RECOMMENDED USE

Take 1 sachet daily dissolved in a glass of water, preferably on an empty bladder, in the morning just after waking up or at night before bedtime.

INGREDIENTS

Bulking agent: Maltodextrin; D-mannose; Acidifier: Citric acid; berry flavour; Bearberry (*Arctostaphylos uva ursi* L. Spreng.) Leaves D.E. tit. 20% in arbutin; Cranberry (*Vaccinium macrocarpon* Aiton) fruits D.E. tit. 25% in proanthocyanidins; Goldenrod (*Solidago virgaurea* L.) aerial parts with flowers D.E. 4/1; Anti-caking agent: Silicon dioxide; Sweetener: steviol glycosides; Manuka (*Leptospermum scoparium* J. R. Forst. & G. Forst.) Essential oil.

*NRV: Nutrient reference values.





Manuka honey and urinary tract.

Manuka Honey is very effective against urinary tract infections.

A Southampton University study shows the incredible **antiaggregant action** on bacteria found on hospital's urinary catheters which are the main cause of post-operative infections.

Washing catheters with water+manuka honey allowed an important **decrease in bacteria** concentration and, therefore, less infections.

Other studies at Dresda University underlined **antiseptic properties** of Methylglyoxal (MGO) contained in Manuka Honey.

In the urological field, its oral intake seems to prevent a lot of typical urinary tract infections like cystitis, calculi and bladder infections.

Urinary tract diseases are often recurrent. Antibiotics usually prescribed to contrast these problems became gradually less efficient because of bacteria resistance, making them ineffective.

Manuka honey doesn't have this limit, becoming capable to solve problem that antibiotic can't. Natural food supplements based on this honey are useful to fight **chronic urinary tract infections**. They are also important to prevent these problems in sensitive subjects.

Vitamins, Minerals and Energy.

Practicing sports, whether at an amateur or competitive level, is subject to moderate or high muscular work, intense sweating and energy consumption which can be doubled compared to other days.

The loss of minerals, vitamins and proteins, requires nutrient integration which cannot always be increased with food.

That's why it's really important to work on minerals integration to restore the correct hydro balance and ensure an intake of nutrients able to support high sports performances.

It's also very important to work on athletes mental efficiency, by administering energizing plant extracts that can increase focus.



Vitamina D3 Vegan - 1000 UI

Vitamina D3 Vegan - 1000 UI is a food supplement in capsules containing Vitamin D3 that contributes to the maintenance of normal bones, normal muscle function, normal function of the immune system and regulates cell division.

COD: 0061

60 capsules - 470 mg each



vegan

gluten free

lactose free

SUPPLEMENT FACTS PER SERVING (2 CPS)

QTY.

NRV*

Vitamin D

50 µg
2000 UI

1000%

RECOMMENDED USE

Take 1 or 2 capsules daily, preferably with meals.

INGREDIENTS

Bulking agent: cellulose, coating agent: hydroxypropylmethylcellulose (capsule shell), anticaking agents: magnesium salts of fatty acids and silicon dioxide, vitamin D3 from vegetable source (cholecalciferol).

*NRV: Nutrient reference values.



A974016747

Vitamina D3 Vegan - 2000 UI

Vitamina D3 Vegan - 2000 UI is a food supplement containing Vitamin D3 that contributes to the maintenance of normal bones, normal muscle function, normal function of the immune system and regulates cell division.

COD: 0062

Bottle of 50 ml



vegan

gluten free

lactose free

SUPPLEMENT FACTS PER SERVING (24 DROPS)

QTY.

NRV*

Vitamin D

50 µg
2000 UI

1000%

RECOMMENDED USE

Take the product during meals as follows:
Children aged 3-10 years: max. 12 drops (1000 UI) daily
Adolescents and adults: max. 24 drops (2000 UI) daily.
For newborns, pregnant and breastfeeding women ask advice to your healthcare practitioner.

INGREDIENTS

Sunflower oil, vitamin D3 from vegetable source (cholecalciferol).

*NRV: Nutrient reference values.



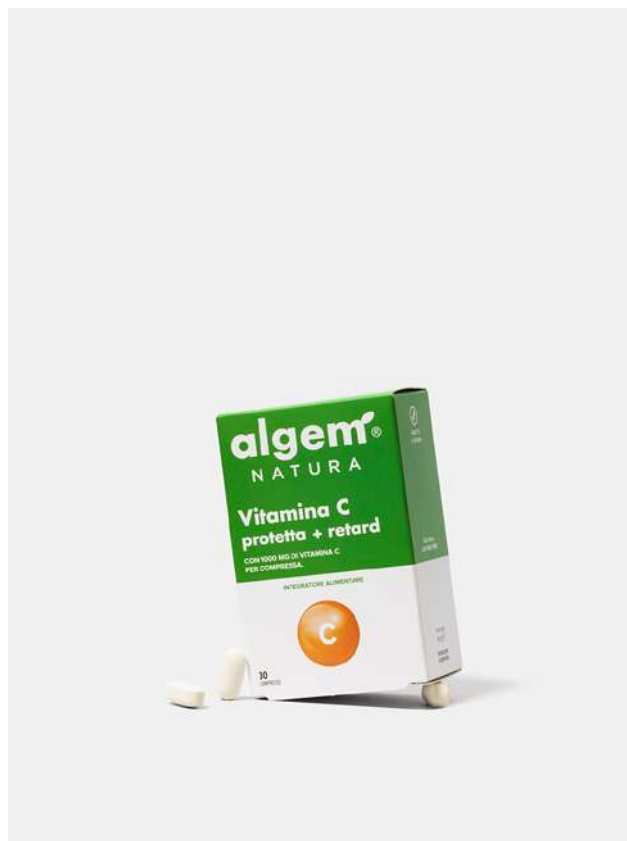
A974016750

Vitamina C Protetta + Retard

Vitamina C Protetta + Retard is a supplement of ethylcellulose-coated Vitamin C and Acerola, gradually released. Slow-released vitamin C improves its absorption by the body. High levels of Vitamin C contribute to the protection of cells from oxidative stress and to the normal function of the immune system.

cod: 0049

30 tablets - 1400 mg each



vegan

gluten free

lactose free

SUPPLEMENT FACTS PER SERVING (1 TABLET)

| | QTY. | NRV* |
|--------------------|---------|-------|
| Vitamin C protect | 975 mg | - |
| of which Vitamin C | 950 mg | - |
| Acerola | 100 mg | - |
| of which Vitamin C | 50 mg | - |
| Vitamin C total | 1000 mg | 1250% |

RECOMMENDED USE

Take 1 tablet daily, preferably in the morning.

INGREDIENTS

Vitamin C (Ethylcellulose-coated L-Ascorbic acid);
Bulking agent: cellulose, Acerola (Malpighia punicifolia L.)
dry extract tit. 50% Vitamin C; anti-caking agents: magnesium
salts of fatty acids and silicon dioxide; coating agent:
hydroxypropyl methylcellulose and cellulose.

*NRV: Nutrient reference values.



Vitamina C 1000 mg

Vitamina C 1000 mg is a supplement of Vitamin C that contributes to the protection of cells from oxidative stress and to the normal function of the immune system.

cod: 0095

Jar of 120 g

Lemon Flavour



vegan

sugar free

gluten free

lactose free

SUPPLEMENT FACTS PER SERVING (4 G)

QTY.

NRV*

Vitamin C total

1000 mg

1250%

RECOMMENDED USE

Solve one scoop of 4 g in 150 ml of water daily, preferably in the morning.

INGREDIENTS

Bulking agent: maltodextrin; Vitamin C (Ascorbic Acid); Sweetener: Erythritol. Flavor: lemon; Anti-caking Agent: silica dioxide; Sweetener: Stevia.

*NRV: Nutrient reference values.



Multivitamin Multimineral

Multivitamin Multimineral is a supplement containing 13 vitamins and 9 minerals supporting various physiological functions and useful in all cases of increased nutritional need or reduced dietary intake (in accordance with recommended daily intake).

cod: 0022

60 tablets - 700 mg each

Orange Flavour

SUPPLEMENT FACTS PER SERVING (2 TABLETS)

| | QTY. | NRV* |
|-----------------------------------|--------|-------|
| Vitamin A | 1 mg | 125% |
| Vitamin B1 (Thiamine) | 2,2 mg | 200% |
| Vitamin B2 (Riboflavin) | 2,8 mg | 200% |
| Vitamin B3 (Nicotinamide) | 32 mg | 200% |
| Vitamin B5 (Calcium Pantothenate) | 12 mg | 200% |
| Vitamin B6 (Pyridoxine) | 2,8 mg | 200% |
| Vitamin B12 (Cyanocobalamin) | 5 µg | 200% |
| Vitamin C (Ascorbic Acid) | 160 mg | 200% |
| Vitamin D | 10 µg | 200% |
| Vitamin E | 24 mg | 200% |
| Vitamin K | 100 µg | 133% |
| Folic Acid | 400 µg | 200% |
| Biotin | 100 µg | 200% |
| Calcium | 160 mg | 20% |
| Phosphorus | 82 mg | 11,7% |
| Chromium | 40 µg | 100% |
| Copper | 2 mg | 200% |
| Iron | 14 mg | 100% |
| Magnesium | 16 mg | 4% |
| Manganese | 4 mg | 200% |
| Selenium | 80 µg | 145% |
| Zinc | 10 mg | 100% |



sugar free

gluten free

lactose free

RECOMMENDED USE

Take 1 or 2 tablets daily with your main meals.

INGREDIENTS

Calcium Phosphate Tribasic, Bulking agent: Isomalt, Ascorbic Acid (Vitamin C), microcrystalline cellulose, Magnesium Citrate, Zinc Gluconate, Maltodextrin, Iron Sulfate, Manganese Gluconate, Nicotinamide (Vitamin B3), Vitamin E acetate, Copper Gluconate, Calcium Pantothenate (Vitamin B5), orange aroma, Sweetener: Sucralose, Anti-caking agents: vegetable magnesium stearate, micronized silica, Pyridoxine hydrochloride (Vitamin B6), Thiamine hydrochloride (Vitamin B1), Riboflavin (Vitamin B2), Vitamin A acetate, Vitamin K1, Folic Acid, Chromium Picolinate, Sodium selenite, Biotin (Vitamin H or B8), Cholecalciferol (Vitamin D), Cyanocobalamin (Vitamin B12).

*NRV: Nutrient reference values.





Mineral Energy

Mineral Energy is a supplement containing maltodextrin and minerals useful to support the body during and after physical activity.

cod: 0040

10 sachets - 20 g each

Orange Flavour



vegan

gluten free

lactose free

SUPPLEMENT FACTS PER SERVING (1 SACHET)

| | QTY. | NRV* |
|-----------|---------|------|
| Sodium | 280 mg | - |
| Cloro | 180 mg | - |
| Potassium | 127 mg | - |
| Magnesium | 23,1 mg | - |
| Vitamin E | 15 mg | 125% |
| Vitamin C | 80 mg | 100% |

RECOMMENDED USE

Take 1 sachet diluted in half liter of water to drink during or after physical activity.

INGREDIENTS

Fructose, maltodextrin, acidifier: tartaric acid and citric acid, sodium bicarbonate, potassium citrate, sodium chloride, orange flavour, sodium citrate, ascorbic acid, magnesium citrate, Vitamin E acetate, sweetener: Stevia. Anti-caking agents: micronized silica.

*NRV: Nutrient reference values.



Magnesio + Vit. B6

Magnesio + Vit.B6 is a supplement in tablets containing 3 different sources of Magnesium: marine, citrate and pidolate associated with Vitamin B6. The supplement helps reduce fatigue and tiredness, contributes to the normal functioning of the nervous system and to the normal muscular function.

cod: 0050

45 tablets - 1 g each



vegan

gluten free

lactose free

SUPPLEMENT FACTS PER SERVING (2 TABLETS)

QTY.

NRV*

Magnesium

450mg

120%

from Marine Magnesium

441 mg

-

Vitamin B6

9,5 mg

678,5%

RECOMMENDED USE

Take 1 or 2 tablets daily, preferably on an empty stomach.

INGREDIENTS

Marine Magnesium (magnesium oxide, magnesium hydroxide, magnesium carbonate, magnesium sulfate, magnesium chloride; containing 45% of magnesium); bulking agents: cellulose and dibasic calcium phosphate; magnesium citrate, magnesium pidolate; anti-caking agents: magnesium salts of fatty acids and silicon dioxide; Vitamin B6 (pyridoxine hydrochloride).

*NRV: Nutrient reference values.



Ferro & Acido Folico

Ferro & Acido Folico is a supplement in capsules containing Iron Bisglycinate highly bioavailable and Ferroplant™, a plant source of iron stored in the intestine and released slowly into the blood. Folic acid promotes normal hematopoiesis and coated Vitamin C enhances iron absorption. The product is recommended in case of increased need of iron, such as persistent fatigue, during pregnancy, while breastfeeding and during menstruation.

cod: 0051 30 capsules - 485 mg each



vegan gluten free lactose free

SUPPLEMENT FACTS PER SERVING (1 CPS)

| | QTY. | NRV* |
|---------------------------|--------|------|
| Iron | 30 mg | 214% |
| from ferrous bisglycinate | 25 mg | - |
| from Ferroplant | 5 mg | - |
| Folic Acid | 400 µg | 200% |
| Vitamin C | 80 mg | 100% |

RECOMMENDED USE

Take 1 capsule daily, preferably on an empty stomach.

INGREDIENTS

Ferroplant™ (curry leaves (*Murraya koenigii* (L.) Spreng.) dry extract 80:1), ferrous bisglycinate, external coating: hydroxypropyl methylcellulose vegetarian capsule; vitamin C (L-A-scorbic Acid, coating agent: ethylcellulose); bulking agent: cellulose; anti-caking agents: magnesium salts of fatty acids and silicon dioxide; Folic Acid.

*NRV: Nutrient reference values.



Spirulina 600

Spirulina 600 is a food supplement containing Spirulina Maxima which has multiple benefits: restorative function, antioxidant, tonic and immunostimulant.

cod: 6008

200 tablets - 600 mg each



vegan

gluten free

lactose free

SUPPLEMENT FACTS PER SERVING (4 TABLETS)

QTY.

NRV*

Spirulina powder

2400 mg

-

of wich phycocyanin

144 mg

-

RECOMMENDED USE

Take 2-4 tablets daily, before main meals.

INGREDIENTS

Spirulina maxima (Setchell & Gardner) powder; anti-caking agents: silica dioxide and magnesium salts of fatty acids.

*NRV: Nutrient reference values.

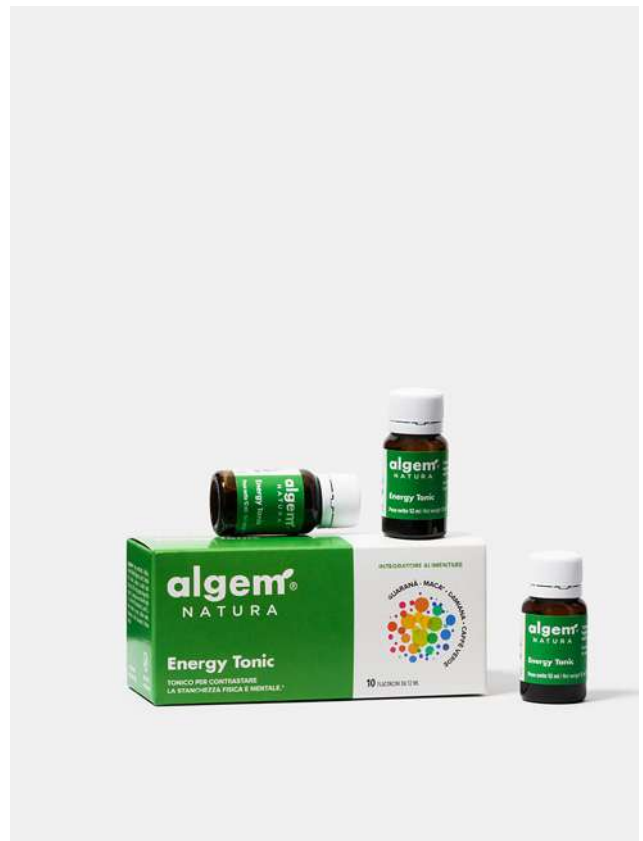


Energy Tonic

Energy Tonic is a supplement containing plant extracts such as Maca, Damiana, Green Coffee and Guarana known for their tonic action, helping reduce physical and mental fatigue.

cod: 0023

10 vials - 12 ml each



vegan

sugar free

gluten free

lactose free

SUPPLEMENT FACTS PER SERING (1 VIAL)

| | QTY. | NRV* |
|---------------------------|--------|------|
| Guarana D.E. tit 10% | 300 mg | - |
| Maca D.E. tit 4:1 | 200 mg | - |
| Damiana D/E 4:1 | 200 mg | - |
| Green coffee D.E. tit 10% | 200 mg | - |
| Anhydrous caffeine | 40 mg | - |

RECOMMENDED USE

Take one vial daily.

INGREDIENTS

Osmotic water, Fructose, Guarana (Paullinia Cupana K.) seeds dry extract titrated 10% caffeine, Acidity regulators: sodium lactate sol. 60%, Maca (Lepidium Meyenii W.) root dry extract, Damiana (Turnera Widespread W.) leaves dry extract, Green Coffee (Coffea arabica L.) seeds dry extract, anhydrous caffeine, anhydrous caffeine. Sweetener: Stevia, Preservative: Potassium sorbate.

*NRV: Nutrient reference values.



A970524599

Gastrointestinal wellbeing

Many studies show that an efficient and healthy gastrointestinal tract is the most powerful self-defense weapon of our body. It can help the correct function of 80% of our body metabolic processes.

In particular, a healthy intestinal barrier plays a key role in maintaining a correct liver, immune and cardiovascular function. That's the reason why we decided to increase the efficacy of our probiotics by adding nucleotides, able to restore a healthy intestinal mucosa.

Nucleotides take part in the majority of metabolic processes and are strictly related to the good functioning of organs having high cellular turnover as, for example, the liver and the intestines.

i

NUCLEOTIDES AND INTESTINE. WHY ARE THEY SO IMPORTANT?

Nucleotides represent DNA and RNA elements, which are present into all our body cells. Many scientific publications show that dietary supplements with nucleotides help restore a healthy microbiota and stimulate Bifidobacteria growth.



Nucleo Plus

Nucleo Plus is a supplement in gastro-resistant capsules containing nucleotides, FOS and 10 billion probiotics that promote a healthy digestive tract in case of gastrointestinal disorders.

cod: 0059

10 capsules - 705 mg each

10 BLN/capsule



gluten free

SUPPLEMENT FACTS PER SERVING (1 CPS)

| | QTY. | NRV* |
|---------------------------|--------|------|
| Nucleotides | 200 mg | - |
| Total live probiotics | 10 MLD | - |
| of which: | | |
| bacillus coagulans | 6 MLD | - |
| lactobacillus acidophilus | 2 MLD | - |
| saccharomyces boulardii | 2 MLD | - |
| FOS | 50 mg | - |

RECOMMENDED USE

Take 1 capsule daily, preferably not with meals.

INGREDIENTS

Nucleotides (from *S. Cerevisiae*, bulking agent: gum arabic), live bacteria: *Saccharomyces boulardii* MTCC5375, *Bacillus coagulans* BC513, *Lactobacillus acidophilus* SGL11; fructo - oligosaccharides (FOS), bulking agent: cellulose; anti-caking agent: magnesium salts of fatty acid and silica dioxide.

*NRV: Nutrient reference values.



Nucleo Immuno

Nucleo Immuno is a supplement in single-dose vials containing nucleotides, FOS and tinalized bacteria that promote a healthy digestive tract and immune system function.

COD: 0060

10 vials - 10 ml each

6 BLN/vial

SUPPLEMENT FACTS PER SERVING (10 ML)

| | QTY. | NRV* |
|----------------------------------|----------|------|
| Nucleotides | 150 mg | - |
| Tyndallized probiotics | 6 MLD | - |
| of which: | | |
| lactobacillus acidophilus lisato | 2.08 MLD | - |
| lactobacillus rhamnosus lisato | 2.08 MLD | - |
| lactobacillus lactis lisato | 0,46 MLD | - |
| bifidus bifidum lisato | 0,46 MLD | - |
| bifidus longum lisato | 0,46 MLD | - |
| bifidus infantis lisato | 0,46 MLD | - |
| FOS | 50 mg | - |



gluten free

RECOMMENDED USE

Take 1 vial daily, preferably not with meals.
For children aged 3 to 12 years dilute the product in fresh water.

INGREDIENTS

Water, fructose, stabilizer: glycerol; nucleotides (from *S. Cerevisiae*, bulking agent: gum Arabic), fructo-oligosaccharides (FOS), bacterial lysate (may contain traces of milk and milk derivatives): *Lactobacillus acidophilus* SGL11, *Lactobacillus rhamnosus* SGL06, *Lactobacillus lactis* SGLc01, *Bifidus bifidum* SGB 02, *Bifidus longum* SGB05, *Bifidus infantis* SGB 03; acidifier: citric acid; preservative: potassium sorbate; flavor.

*NRV: Nutrient reference values.



A975431533

Eidos Fibre

Eidos Fibre is a food supplement containing inulin and apple fiber.

cod: 0077

Jar of 120 g

Green Apple Flavour



vegan

sugar free

gluten free

lactose free

SUPPLEMENT FACTS PER SERVING (4 G)

QTY.

NRV*

Inulin

3 g

-

Apple fiber

900 mg

-

RECOMMENDED USE

Mix 4 g of product (2 measuring cups) in water or another suitable liquid, once a day.

INGREDIENTS

Inulin; Apple fiber; Flavour;
Anti-caking agent: Silicon dioxide.

*NRV: Nutrient reference values.



Laxy Gem Forte

Laxy Gem Forte is a supplement containing fibers and natural herbal extracts that help promote regular intestinal transit.

cod: 0083

45 tablets - 500 mg each



vegan

gluten free

lactose free

SUPPLEMENT FACTS PER SERVING (2 TABLETS)

| | QTY. | NRV* |
|--|--------|------|
| Senna D.E. tit 20% | 200 mg | 214% |
| of which sennosides | 40 mg | - |
| Frangula D.E. tit 7,5% | 200 mg | - |
| of which hydroxyanthracene heterosides | 15 mg | - |
| Angelica archangelica D.E. | 150 mg | - |
| Caraway D.E. | 150 mg | - |

RECOMMENDED USE

Take 1 - 2 tablets at night before bedtime.

INGREDIENTS

Bulking agent: microcrystalline cellulose; senna leaves (*Cassia angustifolia* M. Vahl.) dry extract tit. 20% in sennosides, frangula bark (*Rhamnus frangula* L.) dry extract tit. 7.5% in hydroxyanthracene heterosides, angelica archangelica fruits (*Angelica archangelica* L.) dry extract, caraway fruit (*Carum carvi* L.) dry extract; anti-caking agents: magnesium salts of fatty acids and silicon dioxide.

*NRV: Nutrient reference values.



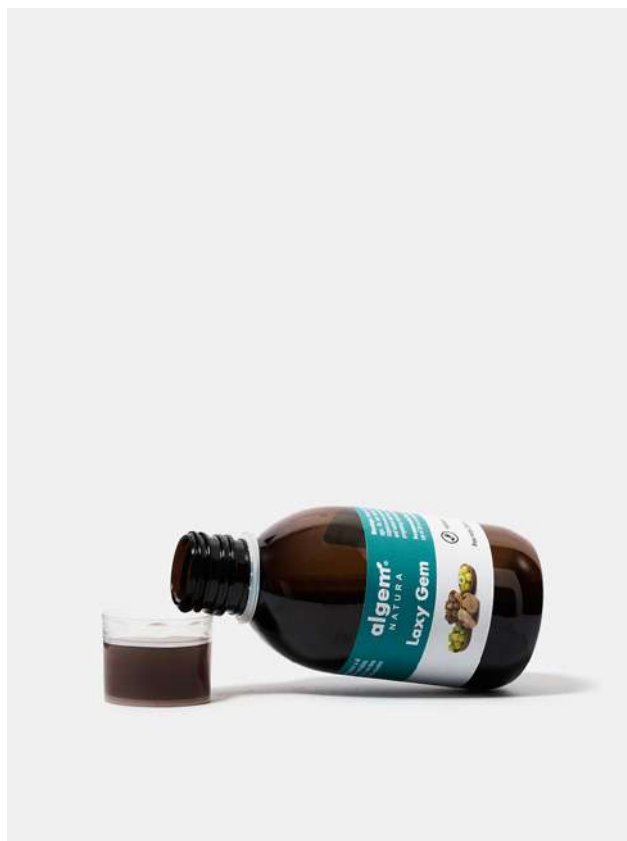
A975981794

Laxy Gem

Laxy Gem is a liquid supplement containing fibers and dry extracts of herbs that promote intestinal transit.

cod: 0038

Flacone da 200 ml



vegan

sugar free

gluten free

lactose free

SUPPLEMENT FACTS PER SERVING (20 ML)

| | QTY. | NRV* |
|----------------------|---------|------|
| Inuline | 2000 mg | - |
| Acacia fiber | 2000 mg | - |
| Terminalia Chebula | 400 mg | - |
| Indian gooseberry | 200 mg | - |
| Terminalia Bellerica | 200 mg | - |

RECOMMENDED USE

Take 1 measuring cup of 20 ml at night before bedtime.

INGREDIENTS

Water, Inuline, Acacia fiber, Terminalia chebula R. fruits dry extract tit 40% tannins, Indian gooseberry (Phyllanthus emblica L.) fruits dry extract tit 20% tannins, Terminalia bellerica R. fruits dry extract tit 30% tannins, Acidity regulators: Citric Acid, Sodium lactate sol. 60%, Preservative: Potassium Sorbate, Sweetener: Stevia.

*NRV: Nutrient reference values.



Anti Reflux

Algem Anti Reflux is a supplement containing Sodium alginate and plant extracts of Meadowsweet and Plantain that contribute to the well being of the digestive tract. Chamomile has an emollient and soothing effect on the digestive system.

cod: 0036

12 stick - 10 ml each



vegan

sugar free

gluten free

lactose free

SUPPLEMENT FACTS PER SERVING (2 STICKS)

| | QTY. | NRV* |
|---------------------------|--------|------|
| Plantain D.E. 4:1 | 120 mg | - |
| Meadowsweet D.E. tit 0,2% | 120 mg | - |
| Chamomile D.E. tit 1% | 120 mg | - |

RECOMMENDED USE

Take 1 or 2 sticks daily when needed.

INGREDIENTS

Water, Sodium Alginate, Plantain (*Plantago major* L.) plant extract 4:1, Meadowsweet (*Filipendula Ulmaria* max) summit dry extract tit 0,2% salicylic acid, Chamomile (*Matricaria Chamomilla* L.) flowers dry extract 1% apigenine, Acidity regulator: sodium lactate sol. 60%, Preservative: Potassium sorbate, sweetener: Stevia. Flavour: apricot.

*NRV: Nutrient reference values.



Nucleo Enzyvit

Nucleo Enzyvit is a dietary supplement in tablets containing enzymes, nucleotides and chicory extract that promotes digestive and hepatobiliary function.

cod: 0085

30 tablets - 620 mg each

SUPPLEMENT FACTS PER SERVING (2 TABLETS)

| | QTY. | NRV* |
|-------------------|---------|------|
| Nucleotides | 200 mg | - |
| Enzymatic complex | 200 mg | - |
| Protease | 1200 PC | - |
| Amilase | 4800 DU | - |
| Lipase | 40 FIP | - |
| Lactase | 800 ALU | - |
| Cellulase | 220 CU | - |
| Bromelain | 200 mg | - |
| equal to | 500 GDU | - |
| Chicory D.E. 1/4 | 200 mg | - |



vegan

gluten free

lactose free

RECOMMENDED USE

Take 1 tablet before lunch and 1 tablet before dinner.

INGREDIENTS

Bulking agent: cellulose, enzymatic complex (Protease, Amilase, Lipase, Lactase, Cellulase), Nucleotides, Bromelain 2500 GDU / g from Pineapple (Ananas Comosus (L.) Merr.), Chicory (Cichorium intybus L.) root d.e. 1/4, anti-caking agents: magnesium salts of fatty acids and silicon dioxide.

*NRV: Nutrient reference values.



Nausea Control

Nausea Control is a supplement containing plant extracts of Ginger, Anise and Fennel which contribute to the normal digestive function and gastrointestinal motility. Moreover, Ginger has anti-nausea properties.

cod: 0037

30 capsules - 400 mg each



vegan

gluten free

lactose free

SUPPLEMENT FACTS PER SERVING (2 CPS)

| | QTY. | NRV* |
|--------------------|--------|------|
| Ginger D.E. tit 5% | 600 mg | - |
| Anise D.E. 4:1 | 100 mg | - |
| Fennel D.E. tit 1% | 100 mg | - |

RECOMMENDED USE

Take 1 - 2 capsules up to 3 times a day for digestive and gastric disorders. For travel sickness, take 2 capsules 30 minutes before travelling.

INGREDIENTS

Ginger (*Zingiber Officinalis* R.) rhizome dry extract tit 5% gingerols, Anise (*Illicium Verum* Hooker) fruit dry extract 4:1, Fennel (*Foeniculum Vulgaris* Mill.) fruit dry extract tit 1% Essential oil. Capsules of plant origin (hypromellose).

*NRV: Nutrient reference values.



Muscles, bones and joints.

It is estimated that musculoskeletal pain affects 91% of the Italian population, making it the first cause of pain before headache.

Musculoskeletal pain can appear at all ages even if the most common is after 50 years as a consequence of disorders of different type that can happen to bones, joints, muscles and related nervous tissues, with consequent movement limitations and stiffness.

The most common are: back pain, cervical pain, tendinitis, osteoarthritis, myalgia and rheumatism. Musculoskeletal pain may be acute or chronic and can manifest in focal mode, located in a specific point, or in a diffuse form, extended to a body area which can be more or less wide.



i

**DO YOU KNOW THAT
MAGNESIUM CAN BE
ABSORBED BY THE SKIN?**

Lots of studies show that transdermic magnesium can be a valid ally and a specific remedy against cramps and muscles spasms, without causing typical magnesium side effects as nausea and intestinal problems.

Lenimag®

Lenimag® cream, is dermatologically tested for sensitive skin and fragrance-free. It contains Magnesium, Aloe Vera, Bisabolol, Beta-Glucan, Devil's Claw, Panthenol, Rice starch, Allantoin, Avocado Oil, Shea Butter. The complementary action of magnesium with the other ingredients makes Lenimag® cream helpful in situations where an immediate soothing effect is required.

cod: 0055

Tube of 100 ml



vegan

nickel free

dermatologically tested for sensitive skin

RECOMMENDED USE

Apply to the affected area, on your body and/or face 2 or 3 times daily, until complete absorption.

INGREDIENTS

Aloe barbadensis leaf juice (*), Aqua, Magnesium chloride, Cetearyl alcohol, Persea gratissima oil, Ethylhexyl stearate, Glyceryl stearate, Propanediol, Behenyl alcohol, Cetearyl glucoside, Olea europæa oil unsaponifiables, Oryza sativa starch, Panthenol, Allantoin, Harpagophytum procumbens root extract, Bisabolol, Butyrospermum parkii butter, Olus oil, Betaglucan, Xanthan gum, Glycerin, Candelilla cera, Lecithin, Tocopherol, Hydrogenated vegetable oil, Tetrasodium glutamate diacetate, Ascorbyl palmitate, Ethylhexylglycerin, Citric acid, Potassium sorbate, Sodium benzoate, Benzyl alcohol.

*ingredients from organic farming

*NRV: Nutrient reference values.



Dol Gem

Dol Gem is a supplement containing vegetarian Glucosamine and plant extracts of Devil's Claw and Boswellia that are useful in case of joint pain. Vitamin C from Dog Rose contributes to the normal synthesis of collagen that supports the normal functions of cartilage. Ginger helps to release localized tension and Turmeric, in addition to its beneficial effect on joints, has important antioxidant properties.

cod: 0031

60 capsules - 400 mg each



vegan

gluten free

lactose free

SUPPLEMENT FACTS PER SERVING (2 CPS)

| | QTY. | NRV* |
|--------------------------|--------|------|
| Glucosamine | 300 mg | - |
| Devil's Claw D.E. tit 1% | 200 mg | - |
| Turmeric D.E. 1/4 | 120 mg | - |
| Boswellia D.E. tit 65% | 60 mg | - |
| Dog rose D.E. tit 70% | 60 mg | - |
| Ginger D.E. tit 5% | 60 mg | - |

RECOMMENDED USE

Take 1 capsule, twice a day.

INGREDIENTS

Glucosamine Sulfate, Devil's Claw (*Harpagophytum procumbens*) root dry extract tit 1% harpagoside, Turmeric (*Curcuma Longa L.*) rhizome dry extract 1/4, Boswellia (*Boswellia serrata R.*) resin dry extract tit 65% boswellic acid, Ginger (*Zingiber R. officinalis*) root dry extract tit 5% gingerol, Dog Rose (*Rosa Canina L.*) fruit dry extract tit 70% vitamin C, Anti-caking agents: magnesium stearate, micronized silica. Capsules of plant origin (hypromellose).

*NRV: Nutrient reference values.





algenm[®]
NATURA

Con Acido Ialuronico
e Collagene

Eidos Mobility
MUSCOLI, ARTICOLAZIONI E OSSA

Proteine
di Riso e
Lattine
60%

INTEGRATORE ALIMENTARE

Forma
Naturale

Gusto
Vaniglia

Netto 300 g e

GLICINA
LACTINA

Eidos Mobility

Eidos Mobility is a supplement containing proteins of plant origin, vitamins, minerals, hyaluronic acid and collagen.

cod: 0078

Jar of 300 g

Vanilla Flavour

SUPPLEMENT FACTS PER SERVING (20 G)

QTY. NRV*

| | | |
|--------------------------------|--------------------------|------|
| Energy | 313,01 kJ/ 73,95 kcal | |
| Fats | 0,79 g | - |
| of which saturated fatty acids | 0,136 g | - |
| Carbohydrates | 8,82 g | - |
| of which sugars | 8 g | - |
| Fiber | 0,58 g | - |
| Protein | 7,6 g | - |
| Salt | 0,03 g | - |
| Vitamin B6 | 1,4 mg | 100% |
| Vitamin B12 | 2,5 µg | 100% |
| Calcium | 120 mg | 15% |
| Manganese | 0,3 mg | 15% |
| Collagen | 1,2 g | - |
| Dog Rose D.E. tit 70% | 23 mg | - |
| of which Vitamin C | 16 mg | 20% |
| Sodium hyaluronate | 54 mg | - |



gluten free

lactose free

RECOMMENDED USE

Mix 2 measuring cups (20 g) of product once a day in a large glass of water or other suitable liquid, shake vigorously.

INGREDIENTS

Fructose; Rice protein; Lupine protein; Hydrolyzed collagen; Thickener: sodium alginate; Calcium phosphate; Vanilla flavor; Sodium hyaluronate; Dog Rose (*Rosa canina* L.) fruit d.e. tit. 70% in vitamin C; Anti-caking agent: silicon dioxide; Manganese gluconate; Vitamin B6 (Pyridoxine hydrochloride); Vitamin B12 (Cyanocobalamin).

*NRV: Nutrient reference values.

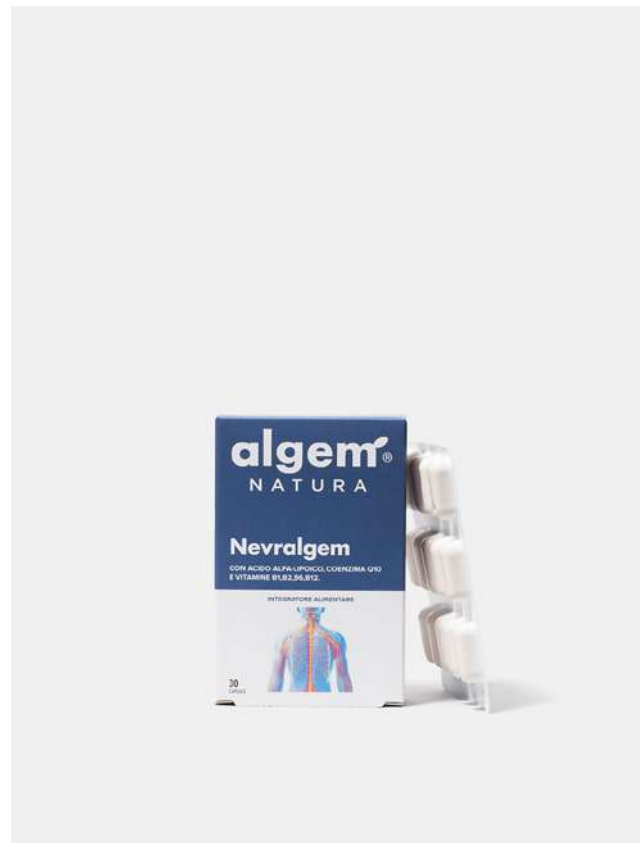


Nevralgem

Nevralgem is a supplement containing alpha lipoic acid, Coenzyme Q10 and extract of turmeric that can be used in case of peripheral neuropathy. The product contains B-complex vitamins that contribute to the normal function of the nervous system.

cod: 0039

30 capsules - 420 mg each



gluten free

lactose free

SUPPLEMENT FACTS PER SERVING (1 CPS)

| | QTY. | NRV* |
|-------------------|--------|------|
| Alpha lipoic acid | 300 mg | - |
| Turmeric D.E. 4:1 | 100 mg | - |
| Coenzyme Q10 | 10 mg | - |
| Vitamin B6 | 4,2 mg | 300% |
| Vitamin B2 | 2,8 mg | 200% |
| Vitamin B1 | 2,2 mg | 200% |
| Vitamin B12 | 5 µg | 200% |

RECOMMENDED USE

Take one capsule daily.

INGREDIENTS

Alpha lipoic acid, Turmeric (*Curcuma Longa L.*) root dry extract 4:1, Coenzyme Q10, Vitamin B6 (pyridoxine chlorhydrate), Vitamin B2 (riboflavin), Vitamin B1 (thiamine chlorhydrate), Anti-caking agents: micronized silica, Vitamin B12 (cyanocobalamin). Capsules of plants origin (hypromellose).

*NRV: Nutrient reference values.



Benessere Ossa

Benessere Ossa is a supplement in capsules containing Calcium, plant extracts of Horsetail, Green Tea, Borage oil and vitamins K and D that promote bone health. Calcium, extracted by Lithotamnium Calcareum, is necessary for the maintenance of normal bones. Horsetail contains high levels of minerals and silica, thus promoting connective tissue trophism. Borage contributes to normal joint function and contains omega 6 fatty acid, while vitamins K and D together can significantly promote bone health.

COD: 0094

30 capsules - 755 mg each

SUPPLEMENT FACTS PER SERVING (2 CPS)

| | QTY. | NRV* |
|-------------------------------|---------|------|
| Calcium | 160 mg | 20% |
| Horsetail D.E. tit 1% | 300 mg | - |
| of which silica | 3 mg | - |
| Green Tea D.E. | 300 mg | - |
| of which polyphenols | 294 mg | - |
| of which EGCG | 120 mg | - |
| Borage oil | 150 mg | - |
| of which palmitic acid | 10 mg | - |
| of which stearic acid | 2 mg | - |
| of which oleic acid | 14 mg | - |
| of which linoleic acid | 34 mg | - |
| of which eicosanoic acid | 3 mg | - |
| of which gamma linolenic acid | 22 mg | - |
| Vitamin K2 | 52,5 µg | 70% |
| Vitamin D3 | 5 µg | 100% |



vegan

gluten free

lactose free

RECOMMENDED USE

Take 1 or 2 capsules daily, preferably with meals.

INGREDIENTS

Lithotamnion seaweed (Lithothamnium calcareum (Pallas) Areschoug) thallus powder tit 33% Calcium, Horsetail (Equisetum arvense L.) aerial parts DE tit. 1% silica, external coating: capsule of plant origin in hydroxypropyl methylcellulose; Green tea (Camellia sinensis L. Kuntze) leaves DE tit. 98% polyphenols and 40% epigallocatechin gallate (EGCG), Borage oil (Borrigo officinalis L.) powder, menaquinone-7 (Vitamin K); anti-caking agents: magnesium salts of fatty acids and silicon dioxide; cholecalciferol (Vitamin D).

*NRV: Nutrient reference values.



Only Ladies

Moms, wives, daughters, businesswomen, sprint grandmas...
This line is entirely dedicated to the female world and to its
needs. Specific formulations that work on biochemical
processes and female bodies at every age.

i

DIOSMIN IN HEAVY LEGS TREATMENT

Diosmin is commonly used to treat microcirculatory issues by improving capillary blood flow and vascular tone.



Lightlegs

Algem Lightlegs is a supplement containing Diosmin and plant extracts. Diosmin is a naturally occurring flavonoid that can support healthy capillary function and is therefore useful for the proper function of the microcirculation. All the plant extracts contained in the product are useful to promote microcirculatory function thus alleviating the feeling of heaviness in the legs; Yellow sweet clover is also useful to reduce water retention and improve venous circulation.

cod: 0017

30 capsules - 400 mg each



vegan

gluten free

lactose free

SUPPLEMENT FACTS PER SERVING (1 CPS)

| | QTY. | NRV* |
|----------------------------------|--------|------|
| Diosmin | 200 mg | - |
| Yellow sweet clover D.E. tit 20% | 50 mg | - |
| of which coumarin | 10 mg | - |
| Horse chestnut D.E. tit 10% | 50 mg | - |
| Centella Asiatica D.E. tit 40% | 50 mg | - |
| Blueberry D.E. tit 30% | 50 mg | - |

RECOMMENDED USE

Take 1 capsule daily.

INGREDIENTS

Diosmin, Yellow sweet clover (*Melilotus Officinalis* P.) flowering tops dry extract titrated at 20% in Coumarin, Horse chestnut (*Aesculus Hippocastanum* L.) bark dry extract, Centella Asiatica (*Centella Asiatica* L.) aerial parts dry extract, European Blueberry (*Vaccinium Myrtillus* L.) fruit dry extract.

*NRV: Nutrient reference values.



Ciclo Mestruale

Ciclo Mestruale is a supplement containing Marine Magnesium, Chasteberry, Yam, Griffonia, Green Tea and Vitamin B6 useful for women suffering from PMS and period symptoms. Marine Magnesium contributes to the reduction of mental and physical fatigue and has a beneficial effect on cramping of the uterine muscle. Chasteberry and Yam help reduce period symptoms whereas Griffonia promotes normal mood, relaxation and helps control appetite. Green Tea has tonic properties and helps reduce water retention. Vitamin B6 promotes normal psychological function and contributes to the regulation of hormonal activity.

cod: 0048

30 tablets - 650 mg each

SUPPLEMENT FACTS PER SERVING (1 TABLET)

| | QTY. | NRV* |
|----------------------------|---------|------|
| Chasteberry D.E. tit 2,5 % | 100 mg | - |
| of which agnuside | 2,5 mg | - |
| Marine magnesium | 93,8 mg | 25% |
| Dioscorea D.E. tit 20% | 60 mg | - |
| of which diosgenin | 12 mg | - |
| Griffonia D.E. tit 25% | 50 mg | - |
| of which 5-HTP | 12,5 mg | - |
| Green Tea D.E. | 50 mg | - |
| of which polifenoli | 49 mg | - |
| of which EGCG | 20 mg | - |
| Vitamin B6 | 1,4 mg | 100% |



vegan

gluten free

lactose free

RECOMMENDED USE

Take one tablet daily, for a period of 60 - 90 days without interruption.

INGREDIENTS

Marine Magnesium (magnesium content equal to 45%); Chasteberry (*Vitex agnus-castus* L.) fruits tit. 2.5% agnuside; Yam (*Dioscorea opposita* Thunb) rhizome DE tit. 20% diosgenin; Griffonia (*Griffonia simplicifolia* (DC) Baill.) seed DE tit. 25% 5-hydroxytryptophan (5-HTP); Green tea (*Camellia sinensis* L. Kuntze) leaves tit. 98% polyphenols and 40% epigallocatechin gallate (EGCG); bulking agents: cellulose and dicalcium phosphate; Vitamin B6 (pyridoxine hydrochloride); anti-caking agent: magnesium salts of fatty acids and silicon dioxide.

*NRV: Nutrient reference values.



Benessere vie Urinarie

Benessere Vie Urinarie is a supplement in gastroresistant capsules containing Cranberry, Oregano essential oil, N-acetylcysteine and D-Mannose. Cranberry is known to promote urinary health and works along with the other ingredients of the product in case of UTI (Urinary Tract Infection). The supplement can be used to help prevent UTI.

cod: 0044

20 capsules - 710 mg each



gluten free

lactose free

SUPPLEMENT FACTS PER SERVING (2 CPS)

| | QTY. | NRV* |
|------------------------|--------|------|
| D-mannose | 380 mg | - |
| N-acetylcysteine | 300 mg | - |
| Cranberry D.E. tit 25% | 288 mg | - |
| of which PAC | 72 mg | - |
| Oregano E.O. | 6 mg | - |

RECOMMENDED USE

If needed, take 2 capsules daily (preferably before bedtime).
As prevention and for maintenance, take one capsule daily (preferably before bedtime).

INGREDIENTS

D-mannose, N-acetylcysteine, Cranberry (*Vaccinium macrocarpon* Aiton) fruit DE 25% proanthocyanidins (PAC); external coating: enteric coated capsules of plant origin (hydroxypropyl methylcellulose, thickener: gellan gum and dye: titanium dioxide); bulking agent: cellulose, Oregano (*Origanum vulgare* L.) essential oil aerial parts 10% microencapsulated (coating: maltodextrin, Arabic gum and silicon dioxide); anti-caking agents: magnesium salts of fatty acids and silicon dioxide.

*NRV: Nutrient reference values.



Menopausa

Menopausa is a supplement in capsules containing plant extracts of Chasteberry, Black Cohosh, Vervain, Sage, Green Tea, Yam and Dong Quai that promote mental and physical wellbeing during menopause. Green Tea has tonic properties and helps reduce water retention. Black Cohosh, Vervain, Sage, Yam and Dong Quai help reduce menopause symptoms such as hot flushes, mood changes, vaginal dryness.

cod: 0046

30 capsules - 490 mg each

SUPPLEMENT FACTS PER SERVING (2 CPS)

| | QTY. | NRV* |
|------------------------------|----------|------|
| Chasteberry D.E. tit 2,5% | 200 mg | - |
| of which agnuside | 5 mg | - |
| Black Cohosh D.E. tit 2,5% | 140 mg | - |
| of which triterpenglicosides | 3,5 mg | - |
| Green Tea D.E. | 140 mg | - |
| of which polyphenols | 137,2 mg | - |
| of which EGCG | 56 mg | - |
| Dong Quai D.E. tit 1% | 120 mg | - |
| of which ligustilide | 1,2 mg | - |
| Vervain D.E. D/E 4:1 | 80 mg | - |
| Sage D.E. D/E 4:1 | 50 mg | - |
| Yam D.E. tit 20% | 50 mg | - |
| of which diosgenin | 10 mg | - |



vegan

gluten free

lactose free

RECOMMENDED USE

Take 1 or 2 capsules daily, preferably with meals.

INGREDIENTS

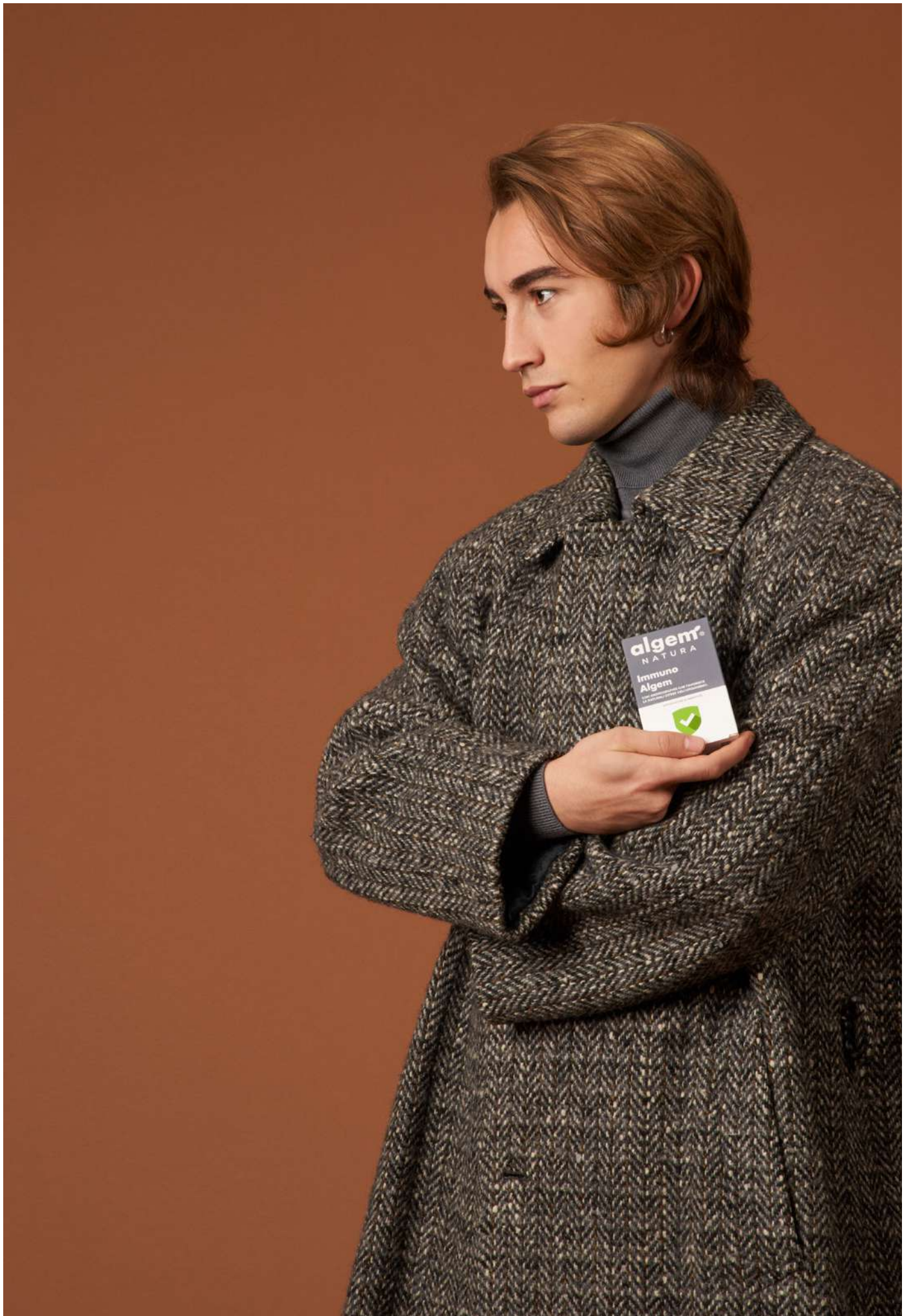
Chasteberry (*Vitex agnus-castus* L.) fruits DE tit. 2.5% agnuside; external coating: capsules of plant origin in hydroxypropyl methylcellulose; Black Cohosh (*Cimicifuga racemosa* (L.) Nutt.) rhizome DE tit. 2.5% triterpenglicosides, Green Tea (*Camellia sinensis* (L.) Kuntze) leaves DE tit. 98% polyphenols and 40% epigallocatechin gallate (EGCG), Dong Quai (*Angelica Sinensis* L.) root DE tit 1% ligustilide, Vervain (*Verbena officinalis* L.) aerial parts dry extract D/E 4:1, Sage (*Salvia officinalis* L.) leaves dry extract D/E 4:1, Yam (*Dioscorea opposita* Thum) rhizome DE tit. 20% diosgenin; anti-caking agents: magnesium salts of fatty acids and silicon dioxide.

*NRV: Nutrient reference values.



Algem total

For those looking for an effective solution to a specific problem, with a wide range of products for different kind of conditions.



Immuno Algem

Immuno Algem is a supplement containing a mixture of three species of Echinacea (Purpurea, Pallida and Angustifolia), Pau d'Arco, Andrographis and Cat's Claw, that contribute to the normal function of the immune system thanks to an immunostimulating action, thus promoting the body's natural defenses. Moreover, the Dog Rose contained in Immuno Algem plays a supportive and restorative role.

cod: 0011

30 capsules - 400 mg each



vegan

gluten free

lactose free

SUPPLEMENT FACTS PER SERVING (2 CPS)

| | QTY. | NRV* |
|---------------------------|--------|------|
| Echinacea Mix D.E. tit 4% | 300 mg | - |
| Pau d'Arco D.E. D/E 4:1 | 200 mg | - |
| Andrographis D.E. tit 10% | 100 mg | - |
| Dog Rose D.E. tit 70% | 100 mg | - |
| Cat's Claw D.E. tit 3% | 100 mg | - |

RECOMMENDED USE

Take 1 - 2 capsules daily, at breakfast or with your main meal.

INGREDIENTS

EBE Echinacea Mix (Echinacea Purpurea (Echinacea Purpurea M.) herb (aerial parts) dry extract, Echinacea Pallida (Echinacea Pallida B.) root dry extract, Echinacea Angustifolia (Echinacea Angustifolia Dc.) root dry extract, Maltodextrin, colloidal anhydrous silica), Pau d'Arco (Tabebuia Avellanedae L.) bark dry extract, Cat's Claw (Uncaria Tomentosa W.) bark dry extract, Andrographis (Andrographis Paniculata N.) top dry extract, Dog Rose (Rosa Canina L.) fruit dry extract. Capsules of plant origin (hypromellose).

*NRV: Nutrient reference values.



Immuno Algem Junior

Immuno Algem Junior is a supplement containing a mix of Echinacea microgreens from vertical farming and zero residue certified; Vitamin D3 and Zinc help support the body's natural defenses in association with Dog rose, Elderberry, Black Currant and Astragalus.

cod: 0012

Bottle of 200 ml

Red Fruits Flavour



gluten free

lactose free

SUPPLEMENT FACTS PER SERVING (20 ML)

| | QTY. | NRV* |
|----------------------------|-----------------|-------|
| Echinacea Mix D.E. Tit 4% | 200 mg | - |
| Astragalus D.E. Tit 70% | 100 mg | - |
| Dog rose D.E. Tit 70% | 40 mg | - |
| Black currant D.E. Tit 1 % | 40 mg | - |
| Elderberry D.E. Tit 0.3% | 40 mg | - |
| Zinc | 10 mg | 100 % |
| Vitamin D | 10 µg 400 UI | 200% |

RECOMMENDED USE

Children 3 years to 6 years: 10ml/day.
Children > 6 years: 15 - 20ml/day.

INGREDIENTS

Water, Fructose, Honey, Echinacea mix (Echinacea Purpurea (Echinacea purpurea (L.) Moench.) aerial parts D.E., Echinacea Pallida (Echinacea pallida (Nutt.) Nutt.) roots D.E.) tit. 2% in polyphenols and 0,4% echinacosides, Acidity regulators: Citric Acid, Sodium lactate sol. 60%, Astragalus (Astragalus membranaceus Bung.) root dry extract, Zinc Gluconate, Dog Rose (Rosa Canina L.) fruit dry extract, Elderberry (Sambucus nigra L.) flowers dry extract, Black Currant (Ribes nigrum L.) leaves dry extract, red fruit flavors, Cholecalciferol (Vitamin D).

*NRV: Nutrient reference values.



NAC

Algem NAC is a food supplement containing the maximum daily dosage (600mg) of N-acetylcysteine per tablet. N-acetylcysteine contributes to the endogenous production of glutathione, a powerful antioxidant that contributes to the protection the immune system and has very important anti-inflammatory properties.

COD: 6009

60 tablets - 1000 mg each



vegan

gluten free

lactose free

SUPPLEMENT FACTS (1 TABLET)

QTY.

NRV*

N-acetylcysteine

600 mg

-

RECOMMENDED USE

Take 1 tablet daily, during your main meal.

INGREDIENTS

N-acetylcysteine; magnesium stearate; talc; maltodextrin; Natural Dye: Blue Gardenia; Microcrystalline Cellulose.

*NRV: Nutrient reference values.



Glucomannano FORTE

Glucomannan Forte is a dietary supplement containing glucomannan from the root of the konjac plant and Chromium. The product contributes to weight loss, macronutrient metabolism and the maintenance of normal blood glucose levels. The maximum beneficial effect is obtained with the daily intake of 3 grams of glucomannan (1 tablet, 3 times a day).

cod: 0127

60 tablets - 1400 mg each

RECOMMENDED USE

Take 1 tablet, 2 or 3 times daily, about 30 minutes before main meals with a full glass of water.

SUPPLEMENT FACTS (3 TABLETS)

| | QTY | NRV* |
|-------------|---------|------|
| Glucomannan | 3000 mg | - |
| Cromo | 200 mcg | 500% |

INGREDIENTS

Glucomannan (Amorphophallus konjac K. Koch), bulking agent: cellulose; anti-caking agents: mono and diglycerides of fatty acids, magnesium salts of fatty acids, Bamboo (Bambusa bambos (L.) Voss) young stem d.e.; chromium picolinate.



vegan ok

gluten free

lactose free

USAGE PRECAUTIONS

Glucomannan can reduce the absorption of drugs if taken simultaneously; take the product at least 1 hour before or 2 hours after any medication.

WHY YOU SHOULD CHOOSE GLUCOMANNANO FORTE BY ALGEM?

| | GLUCOMANNAN FORTE ALGEM | GLUCOMANNAN 1 | GLUCOMANNAN 2 | GLUCOMANNAN 3 |
|--------------------------------------|-------------------------|---------------|---------------|---------------|
| Treatment duration | 20/30 gg | 12/16 gg | 10/20 gg | 8 gg |
| Daily price/ maximum daily dosage | 1,24€ | 1,66€ | 1,53€ | 2,85€ |
| Glucomannan mg/tbt | 1000 | 500 | 459 | 500 |
| Daily tablets quantity | 2 or 3 | 6 or 8 | 3 or 6 | 6 |

*NRV: Nutrient reference values.



Glutathione ACE

Algem Glutathione ACE is a supplement containing the maximum daily dosage allowed of natural reduced L-glutathione, with vitamins A, C and E that are involved in protecting cells from the adverse effects of oxidative stress. Vitamin C also promotes the normal function of the immune system and Vitamin A contributes to eyes and skin protection.

cod: 3006

60 tablets of 1000mg each

SUPPLEMENT FACTS PER SERVING (1 TABLET)

| | QTY. | NRV* |
|-----------------------|--------|------|
| Reduced L-Glutathione | 250 mg | - |
| Acerola tit. 25% | 400 mg | - |
| of which Vitamin C | 100 mg | 125% |
| Vitamin E | 12 mg | 100% |
| Vitamin A | 800 µg | 100% |



vegan

gluten free

lactose free

RECOMMENDED USE

1 tablet daily, preferably on an empty stomach.

RECOMMENDED FOR

Those who are willing to maintain the normal function of their immune system during stressful conditions and fatigue or for those who are looking for a natural solution to prevent oxidative stress caused by viral and bacterial infections.

INGREDIENTS

Acerola (*Malpighia punicifolia* L.) fruit d.e. tit. 25% in vitamin C; reduced L-glutathione from bio-fermentation; maltodextrins; stearate magnesium; vitamin E acetate; microcrystalline cellulose; vitamin A acetate.

*NRV: Nutrient reference values.



Setria® Glutathione & Vitamins A, C, E.

Glutathione is a natural tripeptide formed from the aminoacids L-Cysteine, Glycine and glutamic acid. It is naturally produced by our body and it is the predominant intracellular antioxidant involved in many metabolic processes, from tissue repair to protein synthesis and other immune and detox functions.

Setria® glutathione used in Algem Glutathione ACE is clinically tested, obtained from bio-fermentation and easily absorbed by the body thanks to its particular characteristics.

What are the causes of glutathione deficiency?

Poor diet

A general health status can often be improved by keeping a balanced diet; eating vegetables like asparagus, avocado, spinach and cabbage can increase the levels of glutathione.

Long-term drug therapies

Some drugs can compromise the levels of glutathione over time, leading to more frequent viral infections.

Stress and infections

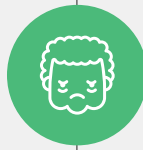
When feeling stressed and tired, infections and other diseases can have a negative impact on glutathione levels, increasing the risk of relapses.

Effects of glutathione deficiency



Increased exposure to viruses and infections

Clinical studies have shown how low levels of glutathione are frequently associated with diseases like viral infections, immune disorders (e.g. allergies) and inflammation.



Oxidative stress and premature skin aging

During summer, glutathione antioxidant function is useful to protect the skin and the eyes against UV rays damages.



Toxin overload and liver dysfunction

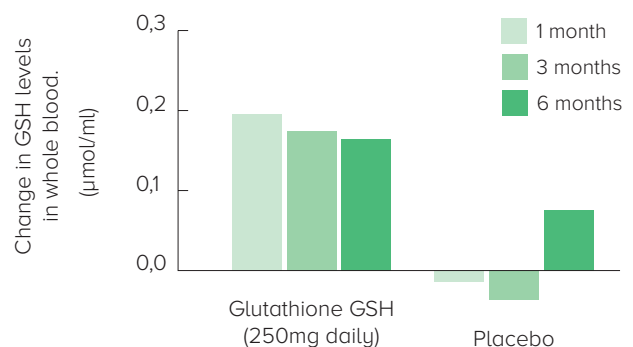
Toxin and free radicals' accumulation can compromise the correct function of the liver.



Highly bioavailable

A double-blind clinical study¹ on 54 adult patients, has shown an increase in glutathione levels in whole blood, plasma, erythrocytes, lymphocytes and buccal cells after daily oral supplementation of 250mg **Setria® glutathione**.

¹ Richie JP Jr, Nichenametta S, Neidig W, Calcagnotto A, Haley JS, Schell TD, Muscat JE. Randomized controlled trial of oral glutathione supplementation on body stores of glutathione. Eur J Nutr. 2015 Mar;54(2):251-63. doi: 10.1007/s00394-014-0706-z. Epub 2014 May 5. PMID: 24791752.



Cholesterol Plus

Cholesterol Plus is a supplement containing Red Yeast Rice, Holy Basil from Vertical Farm, Folic Acid, Berberine and Cassia Nomame which helping cholesterol metabolism.

cod: 0109

30 capsules - 380 mg each

Citrine free, respecting the EU Reg. n. 212/2014



Warning

Product for sale in EU countries in accordance with 2022/860 EU regulation.



vegan

gluten free

lactose free

residue free

SUPPLEMENT FACTS PER SERVING (1 CPS)

| | QTY. | NRV* |
|--------------------------------------|---------|------|
| Berberine | 100 mg | - |
| Holy Basil | 100 mg | - |
| Total Monacolins from Red Yeast Rice | 2,97 mg | - |
| Cassia Nomame | 12,5 mg | - |
| Vitamin E | 12 mg | 100% |
| Folic Acid | 200 µg | 100% |

RECOMMENDED USE

Take 1 tablet daily, preferably on a full stomach.

INGREDIENTS

Ingredients: Berberis (Berberis Aristata DC) bark D.E. tit. 85% berberine; Cultipharm Sanctoral (Holy Basil (Ocimum tenuiflorum L.) aerial part powder), Holy Basil (Ocimum sanctum L.) aerial part D.E. tit. 4% in Eugenol; hydroxy-propyl-methylcellulose coating; Red Yeast Rice (Oryza sativa L., Monascus purpureus W.), Vitamin E acetate; Cassia nomame (Cassia mimosoides L. var. nomame m.) leaves D. E.S. tit. 8% flavonoids. Antiagglomeranti: Magnesium Salt of Fatty Acids, Folic Acid.

*NRV: Nutrient reference values.



Algem Cholesterol

Algem Cholesterol is a supplement containing Red Yeast Rice, plant extracts, Folic Acid and Vitamin E. Monacolin K from red yeast rice helps to maintain normal cholesterol levels and the synergic action of the other plant extracts contained in the product (Berberis, Milk Thistle, Nomame) promotes digestive and hepatic functions and triglyceride metabolism.

cod: 0109

30 capsules - 380 mg each

Citrine free, respecting the EU Reg. n. 212/2014



Warning

Product not available in EU countries in accordance with EU Regulation 2022/860.



vegan

gluten free

lactose free

SUPPLEMENT FACTS PER SERVING (1 CPS)

| | QTY. | NRV* |
|---------------------------------|---------|------|
| Red yeast rice D.E. tit 3% | 333 mg | - |
| of which Monacolin K | 10 mg | - |
| Berberis D.E. tit 97% berberina | 50 mg | - |
| Milk Thistle D.E. tit 70% | 12,5 mg | - |
| Nomame D.E. tit 8% | 12,5 mg | - |
| Vitamin E | 12 mg | 100% |
| Folic acid | 200 µg | 100% |

RECOMMENDED USE

Take 1 capsule daily, preferably with food.

INGREDIENTS

Red Yeast Rice (*Oryza sativa* L., *Monascus purpureus* W., seeds) dry extract 3% Monacolin, Berberis (*Berberis Aristata* DC) bark dry extract titrated 97% berberine, Bulking agents: Maltodextrin, Milk Thistle (*Silybum Marianum* G.) fruits dry extract 70% silymarin, Nomame (*Cassia mimosoides* L. var. *nomame* m.) leaves dry extract titrated 8% flavonoids, Vitamin E acetate, Anti-caking agents: vegetable magnesium stearate, micronized silica, Folic Acid.

*NRV: Nutrient reference values.



Omega 3

Supplement rich in Omega-3 fatty acids (35% EPA and 25% DHA) and mixture of tocopherols (Vitamin E) with antioxidant effects. EPA and DHA contribute to the normal function of the heart and DHA contributes to the maintenance of normal brain function and to the maintenance of normal vision (the beneficial effect is obtained with a daily intake of 250mg DHA and EPA, i.e. 2 capsules).

cod: 0093 120 softgels - 500 mg each



gluten free lactose free

SUPPLEMENT FACTS PER SERVING (4 SOFTGELS)

| | QTY. | NRV* |
|----------------|---------|-----------------------|
| Energy | | 89,92 KJ 21,4 Kcal |
| Fats | 2,012 g | - |
| of which EPA** | 700 mg | - |
| of which DHA** | 500 mg | - |
| Carbohydrates | 204 mg | - |
| Sugars | 0 mg | - |
| Protein | 624 mg | - |
| Salt | 0 mg | - |

RECOMMENDED USE

Take four softgels daily preferably at breakfast or with your main meal.

INGREDIENTS

Fish oil (35% EPA and 25% DHA), Gelatin, Glycerin, Antioxidant: mixture of tocopherols (Vitamin E).

*NRV: Nutrient reference values.



Glycem Control

Glycem Control is a supplement containing extracts of Gymnema, Olive Tree, Galega and Fenugreek that promote carbohydrates metabolism. The presence of Vitamin E contributes to the protection of cells from oxidative stress.

COD: 0034

60 tablets - 650 mg each



vegan

gluten free

lactose free

SUPPLEMENT FACTS PER SERVING (2 TABLETS)

| | QTY. | NRV* |
|-------------------------|--------|------|
| Gymnema D.E. tit 25% | 400 mg | - |
| Olive tree D.E. tit 15% | 200 mg | - |
| Galega D.E. D/E 4:1 | 150 mg | - |
| Fenugreek D.E. tit 50% | 150 mg | - |
| Vitamin E | 24 mg | 200% |

RECOMMENDED USE

Take 2 tablets daily, preferably before the main meals.

INGREDIENTS

Gymnema (*Gymnema sylvestre* R.) leaves dry extract tit 25% gymnemic acids, Olive tree (*Olea Europea* L.) leaves dry extract tit 15% oleuropein, Bulking agents: Maltodextrin, microcrystalline cellulose, Isomalt, Galega (*Galega officinalis* L.) flower heads dry extract D/E 4:1, Fenugreek (*Trigonella foenum-græcum* L.) seeds dry extract tit 50% saponins, Vitamin E Acetate, Anti-caking agents: vegetable magnesium stearate, micronized silica.

*NRV: Nutrient reference values.



Moringa Oleifera

Moringa Oleifera of Algem Natura is a food supplement in capsules of plant origin, made of pure Moringa powder which promotes digestive function, the fluidity of bronchial secretions, normal blood circulation, lipid metabolism and weight balance.

cod: 6007

30 capsules - 450 mg each



vegan

gluten free

lactose free

SUPPLEMENT FACTS PER SERVING (2 CPS)

| | QTY. | NRV* |
|----------------|--------|------|
| Moringa seeds | 440 mg | - |
| Moringa leaves | 440 mg | - |

RECOMMENDED USE

Take 1-2 capsules daily, preferably on full stomach.

INGREDIENTS

Moringa Oleifera seeds, Moringa Oleifera leaves, Anti-caking agent: micronized silica. Capsules of vegetable origin (hypromellose).

*NRV: Nutrient reference values.



Ansyogem

Ansyogem is a supplement in capsules containing plant extracts that promote relaxation and mental well-being.

cod: 0072

30 capsules - 450 mg each



gluten free

lactose free

SUPPLEMENT FACTS PER SERVING (2 CPS)

| | QTY. | NRV* |
|---------------------------|--------|------|
| Bluenesse® (Melissa D.E.) | 300 mg | - |
| of which rosmarinic acid | 18 mg | - |
| Sensoril® (Withania D.E.) | 150 mg | - |
| of which withanolides | 15 mg | - |
| Protizen® | 100 mg | - |
| Griffonia D.E. | 100 mg | - |
| of which 5-HTP | 25 mg | - |

RECOMMENDED USE

Take 1 or 2 capsules daily.

INGREDIENTS

Bluenesse® (Melissa officinalis L. leaves D.E. tit. 6% in rosmarinic acid, tapioca starch); coating agent: vegetable capsule hydroxypropylmethylcellulose; Sensoril® (Withania somnifera (L.) dunnal root D.E. tit. 10% withanolides), Protizen® (protein hydrolysate from fish, maltodextrin, anti-caking agent: magnesium carbonates, aroma), Griffonia (Griffonia simplicifolia (DC) Bail. seeds D.E. tit. 25% 5-hydroxytryptophan (5-HTP)) bulking agents: microcrystalline cellulose; anti-caking agent: magnesium salts of fatty acids and silicon dioxide.

*NRV: Nutrient reference values.



Relax Night

Algem Relax Night is a supplement containing dried extracts of Withania and Lemon Balm that promote relaxation and mental well-being. Moreover, Passion flower helps relaxing and sleeping in case of stress.

cod: 0032

30 capsules - 420 mg each



vegan

gluten free

lactose free

SUPPLEMENT FACTS PER SERVING (1 CPS)

QTY.

NRV*

Withania E.S. tit 2,5 %

140 mg

-

Melissa E.S. tit 12%

140 mg

-

Passiflora E.S. tit 3,5%

140 mg

-

RECOMMENDED USE

Take 1 capsule daily, preferably just before bedtime.

INGREDIENTS

Withania (Withania Sumnifera L.) root dry extract tit. 2.5% withanolides, Lemon Balm (Melissa officinalis L.) leaves dry extract tit 12% rosmarinic acid, Passionflower (Passiflora Edulis sims) herb dry extract tit 3.5% vitexin. Capsules of plant origin (hypromellose).

*NRV: Nutrient reference values.



Memory

Algem Memory is a supplement containing plant extracts of Ginkgo, Bacopa, Centella and B-complex vitamins that support cognitive functions and memory. Vitamins B1, B2, B3, B6 and Vitamin B12 contribute to the normal functioning of the nervous system. Pantothenic acid (vitamin B5) contributes to the efficiency of mental performance and helps reduce tiredness and fatigue.

cod: 0033

45 tablets - 850 mg each



vegan

gluten free

lactose free

SUPPLEMENT FACTS PER SERVING (2 TABLETS)

| | QTY. | NRV* |
|--------------------------|--------|------|
| Ginkgo D.E. tit 3 % | 300 mg | - |
| Bacopa D.E. tit 20% | 300 mg | - |
| Centella A. D.E. tit 20% | 300 mg | - |
| Vitamin B1 | 1,1 mg | 100% |
| Vitamin B2 | 1,4 mg | 100% |
| Vitamin B3 | 16 mg | 100% |
| Vitamin B5 | 6 mg | 100% |
| Vitamin B6 | 1,4 mg | 100% |
| Vitamin B12 | 2,5 µg | 100% |

RECOMMENDED USE

Take 1 tablet twice a day.

INGREDIENTS

Ginkgo (Ginkgo Biloba L.) leaves dry extract tit 3% ginkgo flavonoids, Bacopa (Bacopa Monnieri L. Pennel) herb dry extract tit. 20% bacosides, Centella (Centella Asiatica L.) aerial parts dry extract tit 20% asiaticoside, Bulking agents: microcrystalline cellulose , isomalt. Nicotinamide (Vitamin B3), Calcium pantothenate (Vitamin B5), anti-caking agents: vegetable magnesium stearate, micronized silica, pyridoxine hydrochloride (Vitamin B6), Thiamine Hydrochloride (Vitamin B1), Riboflavin (Vitamin B2), Cyanocobalamin (Vitamin B12).

*NRV: Nutrient reference values.



Hairloss

Algem Hairloss is a supplement containing Horsetail, L-Methionine, L-Cysteine, Millet, Minerals and Vitamins. Millet and Horsetail promote healthy hair and nails, while Selenium and Biotin contribute to the maintenance of normal hair. Moreover, Copper plays an important role in melanin production, a pigment that gives color to hair.

cod: 0020

30 tablets - 650 mg each

SUPPLEMENT FACTS PER SERVING (1 TABLET)

| | QTY. | NRV* |
|------------------------------|---------|------|
| Horsetail D.E. tit 10% | 115 mg | - |
| L-Methionine | 100 mg | - |
| L-Cysteine | 100 mg | - |
| Millet D.E. D/E 4:1 | 100 mg | - |
| Zinc | 7,5 mg | 75% |
| Copper | 1 mg | 100% |
| Vit. B1 Thiamine | 1,1 mg | 100% |
| Vit. B5 Calcium pantothenate | 10 mg | 166% |
| Vit. B6 Pyridoxine | 2 mg | 142% |
| Vit. B12 Cyanocobalamin | 2,5 µg | 100% |
| Vit. C Ascorbic acid | 80 mg | 100% |
| Folic acid | 300 mcg | 150% |
| Biotin | 400 µg | 800% |
| Selenium | 80 µg | 145% |



vegan

gluten free

lactose free

RECOMMENDED USE

Take 1 tablet daily, preferably on a full stomach.

INGREDIENTS

Horsetail (*Equisetum arvense*) herb dry extract titrated 10% silica, L-Methionine, L-Cysteine, Millet (*Panicum Miliaceum L.*) fruits dry extract titrated D/E 4:1, Bulking agents: Maltodextrin, Microcrystalline Cellulose, Ascorbic Acid (Vitamin C), Calcium Pantothenate (Vitamin B5), Zinc Gluconate, pyridoxine hydrochloride (vitamin B6), Thiamine (Vitamin B1), Copper Gluconate, Anti-caking agents: vegetable magnesium stearate, micronized silica, Biotin, Folic Acid, Sodium selenite, Cyanocobalamin (Vitamin B12).

*NRV: Nutrient reference values.



Mela Annurca

Mela Annurca of Algem Natura is a food supplement in capsules containing Annurca apple which has strong antioxidants properties against aging skin, hair loss and high cholesterol levels.

cod: 6005 45 capsules - 550 mg each



vegan gluten free lactose free

SUPPLEMENT FACTS PER SERVING (2 CPS)

| | QTY. | NRV* |
|------------------------|--------|------|
| Annurca apple D.E. 4/1 | 800 mg | - |

RECOMMENDED USE

Take 1 - 2 capsules daily.

INGREDIENTS

Annurca apple (*Malus domestica* Borkh.) fruit D.E. 4/1; hydroxypropyl methylcellulose; Bulking agent: Maltodextrin; Anti-caking agent: Silicon dioxide.

*NRV: Nutrient reference values.

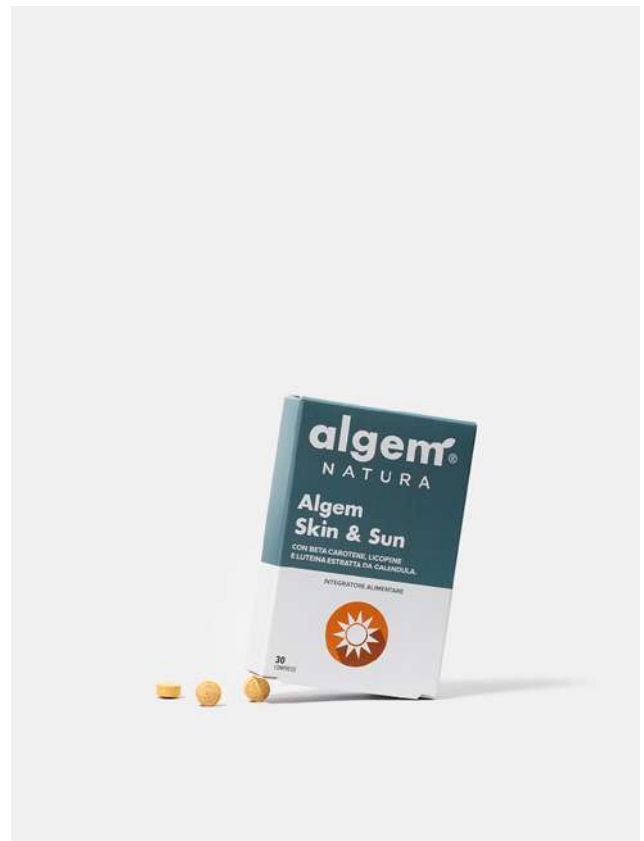


Skin & Sun

Algem Skin & Sun is a β -Carotene, Lycopene and Lutein supplement. β -Carotene and Lycopene help protect the skin against UV rays reducing the risk of burns and promoting suntan. Moreover, lutein protects the skin and the eyes from oxidative stress caused by exposure to sunlight.

COD: 0021

30 tablets - 700 mg each



vegan

gluten free

lactose free

SUPPLEMENT FACTS PER SERVING (1 TABLET)

QTY.

NRV*

β -carotene

7,5 mg

-

Lycopene

6 mg

-

Lutein

6 mg

-

RECOMMENDED USE

Take 1 tablet once daily with your main meal. Start 30-60 days prior to sun exposure and continue taking the tablets for all the duration of sun exposure.

INGREDIENTS

Bulking agents: maltodextrin, microcrystalline cellulose, isomalt, tomato lycopene (*Lycopersicon esculentum* Mill) powder (excipients: maltodextrin, modified starch, acacia gum, esters of sucrose, soy lecithin) starch), β -carotene, Anti-caking agents: vegetable magnesium stearate, micronized silica. Lutein from Marigold flowers (*Calendula Officinalis* L.) (excipients: maltodextrin, colloidal silica).

*NRV: Nutrient reference values.



Prostalgem

Prostalgem is a supplement containing extracts of Saw Palmetto, Pumpkin and Bearberry that help promote prostate health and support urinary function. Moreover, Selenium has antioxidant properties and contributes to normal spermatogenesis.

cod: 0035

30 capsules - 400 mg each

SUPPLEMENT FACTS PER SERVING (1 CPS)

| | QTY. | NRV* |
|---------------------------|--------|------|
| Saw palmetto D.E. tit 40% | 300 mg | - |
| Pumpkin D.E. tit 20% | 50 mg | - |
| Bearberry D.E. tit 20% | 50 mg | - |
| Selenium | 55 µg | 100% |



vegan

gluten free

lactose free

RECOMMENDED USE

Take 1 capsule daily.

INGREDIENTS

Saw Palmetto (*Serenoa Repens* Batram small) fruits dry extract tit 40% fatty acids, Pumpkin (*Cucurbita maxima*) seeds dry extract tit 20% fatty acids, Bearberry (*Arctostaphylos uva-ursi*) leaves dry extract tit 20% into arbutin. Sodium Selenite. Capsules of plant origin (hypromellose).

*NRV: Nutrient reference values.

