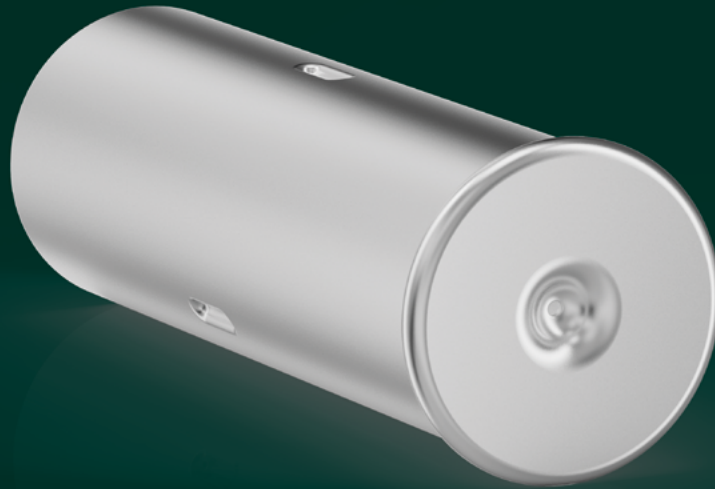


PRESS **ECK**



Medical applications

Deep drawn SMI cartridges

pressteckspa.com

Experience meets innovation.



Design

Standard or customized

Material

Aluminium

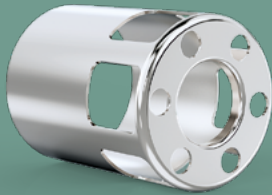
Versions

w/wo sealing sticker

Combining our long-standing experience and technical know-how with a profound philosophy of customer service, we are a strategic partner to some of the world's leading pharmaceutical companies. Our SMI cartridges are produced in cGMP and ISO 15378 certified state-of-the-art production facilities.

Our expertise for your success.

SMI cartridges are only one of many applications of the deep-drawing technology in the medical sector. We have a broad range of deep drawing presses as well as secondary operations allowing us to custom manufacture to all of your needs.



Deep drawing

Through innovation and commitment, we optimize the deep drawing technique beyond what is currently possible. Additionally, the transfer technology allows us to integrate further forming techniques into the press allowing us to produce complex metal components cost efficiently and with the highest precision.

We are able to manufacture complex assemblies by combining our parts with other components. According to your requirements, we develop semi or fully automatic assembly processes using high-performance systems and innovative solutions.



Assemblies

Let's talk about your project.

Marc Steiner
m +49 172 348 48 41
marc.steiner@pressteckspa.com



Visit us for more
information on
pressteckspa.com

Pressteck S.p.A.
Via Meucci 19-25
09040 San Vito, Italy