

The tie-bar-less universal injection moulding machine

victory



ENGEL
be the first



engelglobal.com/victory

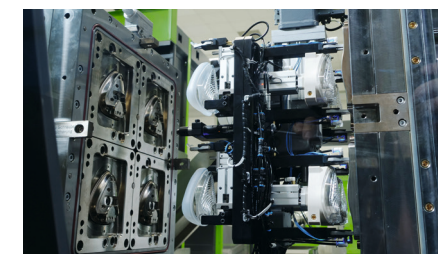
Available machine sizes of the victory

Injection unit	70	130	210	320	460	660	860	1060	1560	2460	3660	5160	8160
Screw diameter mm	15 18 20	22 25 30	25 30 35	30 35 40	35 40 45	40 45 50	45 50 55	50 55 60	55 60 70	60 70 80	70 80 90	80 90 105	90 105 120
Clamping unit	US tons	kN											
victory 30	35	300											
victory 40	45	400											
victory 50	55	500											
victory 60	70	600											
victory 80	90	800											
victory 100	110	1000											
victory 120	130	1200											
victory 140	160	1400											
victory 160	180	1600											
victory 180	200	1800											
victory 200	220	2000											
victory 220	240	2200											
victory 260	290	2600											
victory 300	340	3000											
victory 350	400	3500											
victory 400	450	4000											
victory 450	500	4500											
victory 500	560	5000											

Prepared for almost any application

Areas of application

The tie-bar-less victory is particularly advantageous for multi-cavity applications and multi-colour injection moulding. Since there are no tie-bars limiting the space, there is no need to switch to machines with greater clamping force.



Automation

At ENGEL you get complete production cells in all degrees of complexity from a single source. You benefit from a complete solution with perfectly matched components and save time and money.



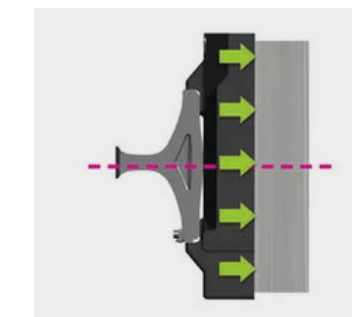
Stock machines

With our stock machine programme, you do not lose any valuable time. You will receive your victory injection moulding machine shortly after ordering. This gives you the flexibility you need in times of rapidly changing economic conditions.

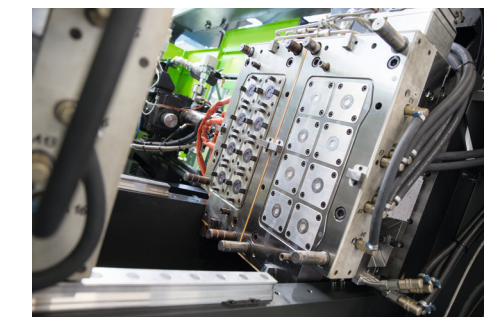


The tie-bar-less clamping unit. Best conditions for your moulds.

Each tie-bar-less clamping unit is precisely set up before delivery via the highly sensitive platen parallelism adjustment. This guarantees a long service life for the machine and moulds. When the clamping force is built up, the platen parallelism of the ENGEL victory automatically adjusts to the mould parallelism. This unique advantage is realised by the innovative Flex-Link system. Regardless of whether the cavities are located in the centre or at the very edge of the clamping platen - they all experience exactly the same clamping force. This is ensured by the patented Force Divider, which distributes the clamping force evenly over the entire clamping surface. This guarantees consistently high part quality even with multi-cavity moulds.



Uniform clamping force distribution



Learn more here



After extensive tests, Gerresheimer relies on the optimum platen parallelism of ENGEL tie-bar-less machines

Gerresheimer produces over 100 million inhalers a year. Each of these consists of a large number of sophisticated injection moulded parts. e-victory injection moulding machines from ENGEL ensure high efficiency for the company. The Gerresheimer decision-makers have previously worked hard to gain confidence in the tie-bar-less injection moulding machines. Read more here:

“We have been able to prove with the sound tests that the guiding accuracy on tie-bar-less machines is at least as good as on tie-bar machines.”



Peter Felber, Global Senior Director Operational Excellence at Gerresheimer, Germany

More about this story



ENGEL
be the first

ENGEL AUSTRIA GmbH | Ludwig-Engel-Straße 1 | 4311 Schwertberg, Austria
Tel. +43 50 620 0 | Fax +43 50 620 3009 | sales@engel.at | www.engelglobal.com

The information, product features and pictures contained in this brochure are intended exclusively as a technical guide. ENGEL is not responsible for any technical changes or print/typographical errors. Reproduction in whole or in part is prohibited without the prior written consent of ENGEL AUSTRIA GmbH.



engelglobal.com/victory



Maximum space in the mould mounting area.

Thanks to the tie-bar-less design, you can produce efficiently and purposefully with our victory.

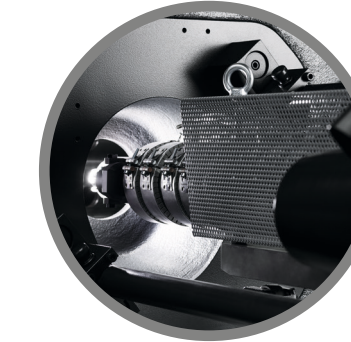
- For large moulds with low clamping force requirements
- Ergonomic access to the tool
- Rapid tool change



Easy integration of automation.

Maximum freedom of movement for robots with fast, side-entry into the machine.

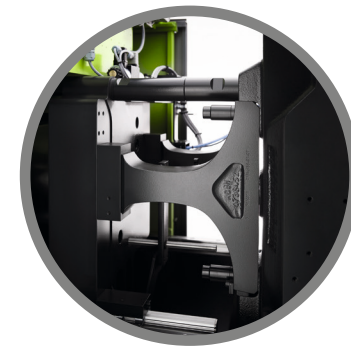
- Compact automation with low overall height
- Higher productivity thanks to short intervention times
- Extensive part manipulation can be easily realised



Powerful injection units.

Process many materials without any problems thanks to the wide range of plasticising components with either hydraulically or electrically driven injection units.

- High repeatability
- Space-saving, compact design
- Easy change of the plasticising unit



The first choice for multi-cavity applications.

Our patented Force Divider ensures consistently high part quality in all cavities.

- Excellent clamping force distribution
- Excellent plate parallelism
- Optimum tool protection



Efficient servo-hydraulic drives.

You can also produce hydraulically in an energy-saving way with the ENGEL ecodrive system.

- Low power loss and minimal cooling water requirement
- Hardly any heat and noise emission
- Parallel movements also possible as an option



Your production staff directly on board.

Our victory series has the latest control version CC300.

- Intuitive operation
- Intelligent assistance systems
- Central control of all units