



**COLD CHAIN
PACKAGING
SOLUTIONS**



Innoplus is a global specialist in the development and delivery of advanced cold chain packaging solutions (reusable and single-use) and smart trackers capable of tracking any shipment data stored, tracked and managed through its "Resilyera" Supply Chain Visibility platform.

Focused mainly on the biotechnology, life sciences and pharmaceutical sectors, the company has developed a range of thermal packaging providing control across the full spectrum of temperatures: from controlled ambient (+15°C/+25°C) through refrigerated (+2°C/+8°C) to frozen; at either -20°C or -80°C. Innoplus is part of the PHSE Group, a leading company in pharmaceutical logistics.

Discover more about us



REUSABLE SOLUTIONS



LIFE+ SERIES

reusable cold chain solutions



Innovative, high-performance, reusable and validated packaging according to ISTA 7D quality standards for the shipments of temperature-sensitive pharmaceutical products in the range between + 2/+ 8 °C, + 15/+ 25 °C and -15/-25 °C for a maximum 168 hours (7 days). This modular advanced isothermal technology is composed of an external box in printed cardboard, an internal polypropylene container, vacuum insulating panels (VIP) and phase change refrigerant eutectic plates (PCM + 22 °C, PCM + 5 °C, PCM -20 °C) which can be selected according to the temperature range to be controlled. The temperature-sensitive labels on the back of the plates ensure the right temperature with respect to the chosen thermal range is achieved before inserting them in the container.

TYPE	Outer Size (cm) L x W x H	Inner Size (cm) L x W x H	Range Temperature Certified (Hr)						Weight (kg)			PCM Plates
			+ 2 to + 8°C		+ 15 to + 25°C		-15°C to -25°C		+ 2 to + 8°C	+ 15 to + 25°C	-15°C to -25°C	
			S	W	S	W	S	W				
LIFE+ 12L	39,3 x 34,2 x 35	22,5 x 22,5 x 22,5	85	168	168	149	63	154	10,6	11,0	13,3	9x9 PCM *6
LIFE+ 16L	42,8 x 37,2 x 38	25,5 x 25,5 x 25,5	101	168	168	165	76	168	12,5	13,0	15,3	10x10 PCM *6
LIFE+ 28L	47,3 x 42,2 x 44	30,5 x 30,5 x 30,5	103	168	168	168	81	168	17,1	17,8	21	12x12 PCM *6
LIFE+ 36L	54,3 x 42,2 x 44	38 x 30,5 x 30,5	102	168	168	168	90	168	21,3	22,1	24,5	12x12 PCM *2 12x15 PCM *4

S= Summer cycle - W= Winter cycle

Advanced insulation thermal technology

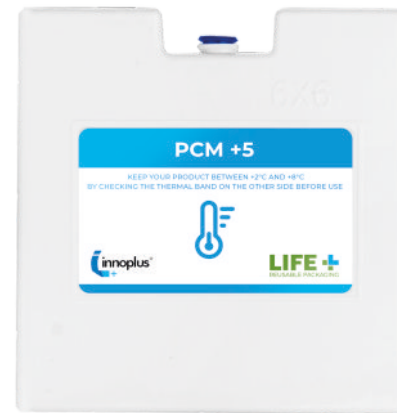
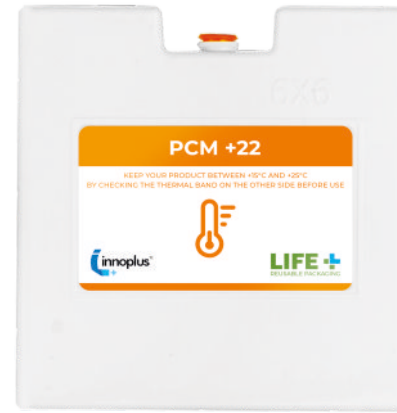
- Vacuum Insulation Panel (VIP)
- Phase Change Material (PCM)
- Exterior Temperature Monitor



The packaging is completed by an innovative exterior monitor which, thanks to the connection to a probe inside the box, offers an indication of the interior temperature without having to open the box. The capacity of these isothermal systems is between 12L and 36L (availability of other formats supplied in stock, on request). Simple to set up, they are suitable for air, sea and road transport, compliant with IATA, ADR and IMDG regulations.



ISTA 7D
CERTIFICATION
VALIDATED BY
TÜV RHEINLAND



PCM Phase Change Materials Series

The plates in PCM (innovative thermal insulating materials) present in LIFE+ thermal packaging provide the performing solution for the transport of perishable products in full compliance with the cold chain. The advantages: increased overall efficiency, improved reliability, energy storage capacity, durability, non-toxicity, reusable.



Temperature Sensitive Label

ACTIVE+ from 20 to 1300 LT

active reusable cold chain solutions



- Range Temperature Certified from -30°C to +40°C
- Power in 12V / 24 V DC or 230V AC
- Optional external LiFePO4 rechargeable power supply

COOL+ SERIES

reusable cold chain solutions



Reusable thermal bags for the safe temperature controlled transport of medicines, made with a pressure system to guarantee a better thermal seal. In several configurations, for all requirements, they contain a pocket to keep the ICE+ refrigerating devices separate from the drug. The ICE+ gel packs are available in cool versions (products 2°/8 °C and 15 °/25 ° C) and frozen (products to maintain a negative temperature).

TYPE	Outer Size (cm) L x W x H	Product Capacity (lt)	Tara Weight (kg)	Tara Weight with ICE+ Cool* (kg)
COOL+ S	25 x 35 x 2,5	1,35	0,070	0,370 (*1 X 0,300)
COOL+ M	38 x 40 x 2,5	2,40	0,125	0,725 (*1 X 0,600)
COOL+ L	50 x 50 x 2,5	3,75	0,200	1,400 (*2 X 0,600)

SINGLE USE SOLUTIONS



THERMO+ SERIES

single-use cold chain solutions



Single-use, modular and validated isothermal packaging for the shipments of temperature-sensitive pharmaceutical products in the range + 2/+ 8°C, + 15/+ 25°C and frozen (-20 °C) for up to 144 hours (6 days). The THERMO+ range includes containers of different sizes (from 7L up to 744L). These modular systems are composed of an external box in printed cardboard, an internal container of "Sintered Expanded Polystyrene" (EPS), for some formats in the more advanced, high-performance Neopor version, a completely recyclable material with excellent thermal qualities, non-toxic and cleanable, and cooling plates (ICE+ Cardboard Pack) can be interchanged according to the temperature range you want to control. Simple to set up, they are suitable for air, sea, and road transport, compliant with IATA, ADR and IMDG regulations.

TYPE	Outer Size (cm) L x W x H	Summer Range Temperature Certified (Hr)			Product Capacity (cm) and Space (lt) with DRY ICE	Product Capacity (cm) and Space (lt) with ICE + Cool	Tara Weight (kg)	Tara Weight with ICE + Cool* (kg)
		+ 2 to + 8°C	+ 15 to + 25°C	-20°C				
THERMO + 03	22,5x22,5x22,5	32	120	98	15x15x15 - 3,4lt	15x8x15 - 1,8lt	0,5	1
THERMO + 05	31x30,5x33,5	52	120	119	17,5x17,5x18 - 5,5lt	17,5x11,5x14 - 2,8lt	0,5	1,5
THERMO + 10	35,5x35,5x37,5	42	120	120	23,5x23,5x22,5 - 12,4lt	16,5x23,5x19 - 7,4lt	1,5	2,5
THERMO + 20	45x45x40	72	120	120	30x30x25 - 22,5lt	23,5x23,5x14,5 - 8lt	2	8,2
THERMO + 30	45x45x52,5	82	120	120	30x30x37 - 33,3lt	23,5x23,5x22 - 12lt	2,5	13
THERMO + 40	58x58x58	120	120	120	42x42x42 - 74lt	35x35x25,5 - 31,2lt	5	22,5
THERMO + 60	79x61x67 Pallet included H82	96	144	144	63x43x 53,5 - 144lt	53x33x33 - 57lt	5,5 Pallet included 15,5	40,5 Pallet included 50,5
THERMO + 120	120x80x67 Pallet included H82	140	144	144	103x63x53,5 - 347lt	94x54x33 - 167lt	10 Pallet included 20	85 Pallet included 95
THERMO + 120XL	120x100x110 Pallet included H125	140	144	144	103x84x94,5 - 817lt	91x71x76 - 491lt	18 Pallet included 31	116 Pallet included 147

ICE+ CARDBOARD PACK

The ICE+ Cardboard Pack line is designed according to the dimensions of THERMO+ single-use isothermal packaging. Made in cardboard boxes, they contain the ICE+ Cool gel packs, offering the following advantages: optimization of the spaces inside THERMO+ isothermal packaging, rapid packaging preparation and reduced condensation.



TYPE	Outer Size (cm) L x W x H	Tara Weight (kg)
ICE + PACK 05	14 x 15 x 3	0,5
ICE + PACK 08	26 x 15 x 3	0,8
ICE + PACK 10	21 x 21 x 3	1
ICE + PACK 15	25 x 25 x 3	1,5
ICE + PACK 20	29 x 29 x 3	2
ICE + PACK 25	37 x 29 x 3	2,5
ICE + PACK 35	40 x 40 x 3	3,5

ICE+ SERIES



ICE+ Cool



ICE+ Frozen

Completely non-toxic gel cooling devices, able to offer the maintenance of the temperature in the required thermal range. Available in two versions, ICE+ Cool and ICE+ Frozen, they manage temperature-controlled shipments in the different ranges + 2 /+ 8 °C, + 15/+ 25 °C and -20 °C. Specifically for use inside THERMO+ isothermal packaging, they guarantee excellent performance in terms of maintaining the temperature depending on the weight of the product or material transported and time. To prepare ICE+ Cool for use, simply place the bag in the freezer (below -15°C) for at least 48 hours. The ICE+ Frozen product, on the other hand, needs to be conditioned at a temperature below -25 °C for at least 48 hours.

TYPE	Outer Size (cm) L x W x H	Range Temperature Certified (Hr)	Freezing Point	Set-up Time (Hr)	Tara Weight (kg)
ICE+ Cool 0,3	16 x 15	From +2°C to +8°C	-15°C	48	0,300
ICE+ Cool 0,5	16 x 18	From +2°C to +8°C	-15°C	48	0,500
ICE+ Cool 1	16 x 27	From +2°C to +8°C	-15°C	48	1
ICE+ Frozen 0,3	16 x 15	- 20°C	-25°C	48	0,300
ICE+ Frozen 0,5	16 x 18	- 20°C	-25°C	48	0,500
ICE+ Frozen 1	16 x 27	- 20°C	-25°C	48	1



Dry Ice is made up of carbon dioxide (CO₂) in a solid state at -78.5 ° C. When dry ice comes into contact with ambient air, it sublimates ("evaporates") directly from the solid to the gaseous state. The extremely low temperature makes it ideal for temperature-controlled transport of perishable materials such as diagnostic samples, biological samples, blood and plasma, drugs, organs. Once its cooling function is exhausted, it has no toxicity, does not pollute, has no smell, does not produce residues or humidity on the products.

Innoplus Dry Ice is produced with CO₂ that possesses the necessary purity requirements provided for by current regulations.

Dry ice is sold by weight in isothermal Innoplus containers in 16 mm pellet format.

A scientist wearing a white lab coat, a blue hairnet, and a blue surgical mask is looking through a black and white microscope. The background is a laboratory with various glassware and equipment, all under a blue light. The text "BIOLOGICAL MATERIALS AND INFECTIOUS SAMPLES" is overlaid in large, bold, blue letters on the left side of the image.

**BIOLOGICAL
MATERIALS AND
INFECTIOUS SAMPLES**



The PathoPak range are strong and durable secondary containers, compliant with transport regulations for UN Class 6.2 Category A and B. Available in three sizes 1, 2 and 3 Litres.

This product can be used for:

- Infectious samples
- Diagnostic samples
- Clinical trials
- Screening programmes
- Eradication schemes

Features:

- Complete PI650/620 solution includes 95kPa tested secondary container, absorbent, bubble wrap, labels, and UN markings
- Reusable
- Ergonomically engineered bottle design for safe manual handling including 1.5 turn lid and non-tapered aperture for easy extraction of samples
- 4GU certified for the use of any primary
- Suitable for cleaning by autoclave
- Full refurbishment services available

TYPE	External Dimensions (mm) L x W x H	Payload Dimensions (Bottle opening diameter x internal height - mm)	Payload Volume	Mass (g)	Volumetric Weight L/6
InnoBioPack 1L	112 x 110 x 190	90 x 170	1 L	240	0,39 kgvolc°
InnoBioPack 2L	153 x 156 x 193	125 x 170	2 L	450	0,77 kgvolc°
InnoBioPack 3L	160 x 160 x 280	125 x 255	3 L	600	1,19 kgvolc°



95kPa Bags

Secondary packaging certified 95kPa for biological materials, category B (UN3373) - packaging instruction n. 650 - suitable for transport by air (compliant with ICAO / IATA regulations) and by road (compliant with ADR / RID regulations)

TYPE	Outer Size (cm) L x W x H	Inner Size (cm) L x W x H
BioShipper	25 x 19 x 11,5	22,5 x 18 x 11

TYPE	Description
BioShipper Kit	BioShipper + 95kPa Small + Absorbent sheet

TYPE	Outer Size (cm) L x W	Inner Size (cm) L x W
95kPa Bag S	17,5 x 28	15 x 22
95kPa Bag M	26 x 37	22,5 x 30
95kPa Bag L	36,5 x 53	33 x 46



TRACKERS & VISIBILITY PLATFORM

SMART TRACKERS

advanced datalogging devices



KELVIN M200

Multi-use cellular connected temperature datalogger with lcd display

TEMPERATURE RANGE



Logistics of critical and sensitive consignments is a multi-stage process including loading, unloading and storing in different places. Kelvin Cellular-Connected Datalogger is built with multiple sensors to make every blind spot and manual intervention visible, especially while monitoring air cargo



KELVIN M300

Multi-use cellular connected Temperature datalogger with Lcd display and probe



Temperature Monitoring



Real time location tracking



Tamper & Shock Recognition



Flight Mode (IATA, FAA Compliant)



LCD Display for Temperature Reading



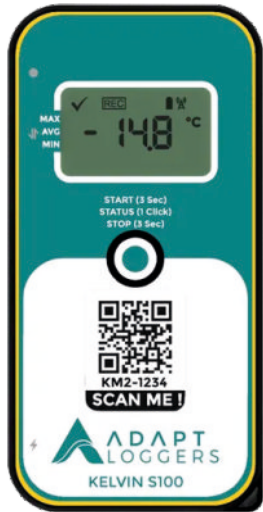
Waterproof and Food Grade Packing



Geofencing



High-Precision Digital Sensor



KELVIN S100

SINGLE-USE CELLULAR CONNECTED TEMPERATURE DATALOGGER WITH LCD DISPLAY

Logistics of critical and sensitive consignments is a multi-stage process including loading, unloading and storing in different places. Kelvin Cellular-Connected Datalogger is built with multiple sensors to make every blind spot and manual intervention visible, especially while monitoring air cargo.



PIXEL W100

REAL TIME WIRELESS TEMPERATURE & HUMIDITY DATALOGGER

Use Pixel solution to Monitor your warehouses without interruption. Charge it over night, assign it to chamber and enjoy live feed of temperature and humidity from your storage chambers for a whole year. Get all data from your warehouse network to a single screen using Pixel webportal (CFR21). Provide role based login access to your team members and clients.

Experience the seamless data flow for superior quality and hassle free compliance.

TEMPERATURE RANGE



TEMPERATURE RANGE



Temperature & Humidity Monitoring



Real time location tracking



Temperature & Humidity Monitoring



Pdf & CSV Reports



High-Precision Digital Sensor



Geofencing



Instant SMS & Email Notifications



Access anytime, anywhere through Web-App



LCD Display for Temperature Reading



Cost Effective and Reliable



24x7 remote monitoring



21 CFR Part 11 Compliant



PROTON S100

Temperature monitoring of assets in the long haul.

TEMPERATURE RANGE

-30°C to 60°C

ADAPT Single-Use Basic Datalogger has an integrated USB port & LED Indicators. No additional software is required to connect the logger to a computer and download the recorded temperature data. The temperature reading has an accuracy of $\pm 0.5^\circ\text{C}$.

- High-Precision Digital Temperature Sensor
- 2 Years Shelf-Life
- Pdf & CSV Reports
- Robust & Durable Plastic Enclosure
- Waterproof and Food Grade Packing
- Cost Effective and Reliable



PROTON S200

Reliable datalogger for monitoring your long-haul consignments

TEMPERATURE RANGE

-30°C to 60°C

The ADAPT Proton S200 has an integrated USB port and a LCD Screen. It generates CSV trip-reports on-board, no additional software is required to connect the logger to a computer and download the recorded temperature data. The temperature reading has an accuracy of $\pm 0.5^\circ\text{C}$.

- High-Precision Digital Temperature Sensor
- Cost Effective and Reliable
- Pdf & CSV Reports
- Robust & Durable Plastic Enclosure
- Waterproof and Food Grade Packing
- IP64
- LCD Display for Temperature Reading



PROTON S300

Reliable datalogger for long-haul consignments shipped in frozen temperatures

TEMPERATURE RANGE

-90°C to 30°C

Adapt's Single-Use Ultra-negative temperature datalogger is ideal for monitoring temperature ranges below -20°C . Its robust built quality ensures reliable performance. No additional software required to connect the datalogger to a computer and download the recorded temperature data.

- Temperature Monitoring (Ultra-Negative)
- 1 Years Shelf-Life
- Pdf & CSV Reports
- LCD of temperature reading indication
- Waterproof and Food Grade Packing
- Cost Effective and Reliable

RESILYERA

Real time in-transit temperature and location

The Tracker Device Adapt and the «Resilyera» Visibility Platform are designed and integrated for this purpose.



Near Real-time Location Tracking



Temperature Detection



Tamper & Shock Recognition



Flight Mode



Instant SMS Up-dates



PDF Reports



Track Everything On Our Platform



Geofencing



Protect your products with accurate tracking of location, temperature and more



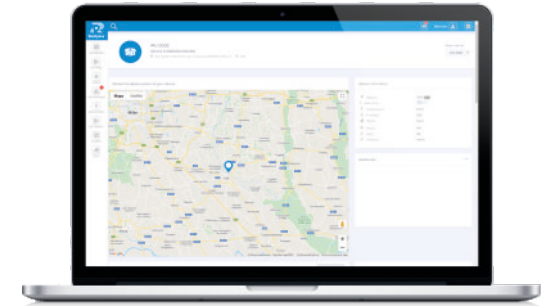
REGISTER

Register the device on the platform



SCAN

Add the device to delivery



TRACK

Track any data on the platform



Connect the Tracker Device to Resilyera visibility platform

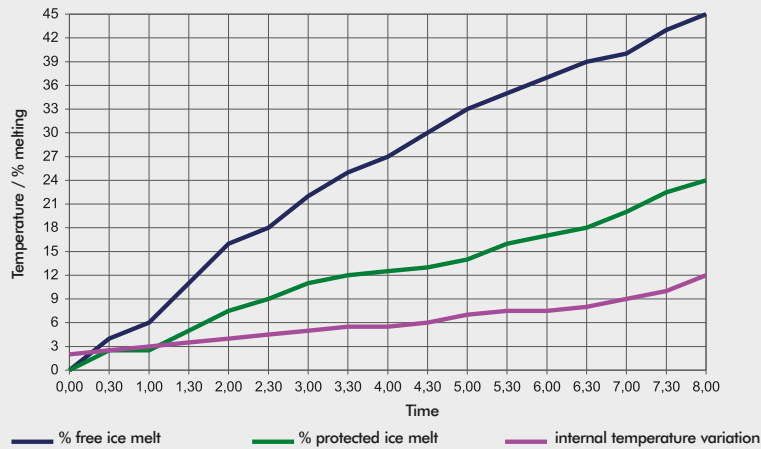
All the data recorded by the device are stored, tracked and managed through the "Resilyera" Supply Chain Visibility platform. Download and share reports for each device. Synchronize multiple tracking systems in tandem thanks to the platform and have real-time data at your fingertips.



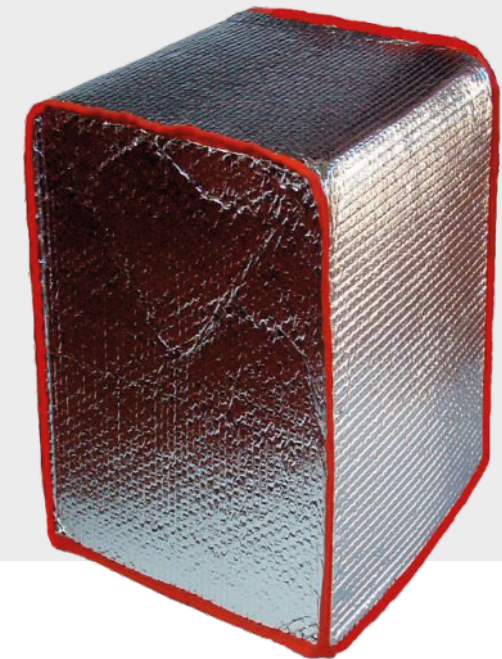
SHIPPING+ SERIES

reusable cold chain solutions

TEST CARRIED OUT IN CLIMATIC CHAMBER AT 30°C



Components:
 Outside PET met.
 Inner bubblewrap PP gr.70 bubble 10x5



SUITABLE FOR MEDIUM/LONG-TERM TRANSPORT

The composition of its insulating layers and its structure ensure good medium- to long-term thermal protection. Being waterproof, Shipping+ can be used outdoors: however, overlapping the pallets is not recommended because the crushing of the air cushion would reduce its insulating power. Ambivalent protection: against both cold and heat.

TYPE	Outer Size (cm) L x W x H	Product Weight (Gr.)	Tear Resistance (Kg)	Thermal Conductivity (W/Mk)	Weight (Gr./Mq)	Thermal Range (°C)
SHIPPING+ 50	(80X120) x 50	430	10	0,04	120	-30/60
SHIPPING+ 100	(80X120) x 100	700				
SHIPPING+ 150	(80X120) x 150	970				
SHIPPING+ 175	(70X80) x 175	770				

COOLD CHAIN PACKAGING SOLUTIONS



Follow us





Innoplus srl
Via Valtellina, 40
20027 Rescaldina (MI)

Phone: (+39) 0331 15.39.480

innoplus.it
sales@innoplus.it

**Discover
more about us**



Follow us

