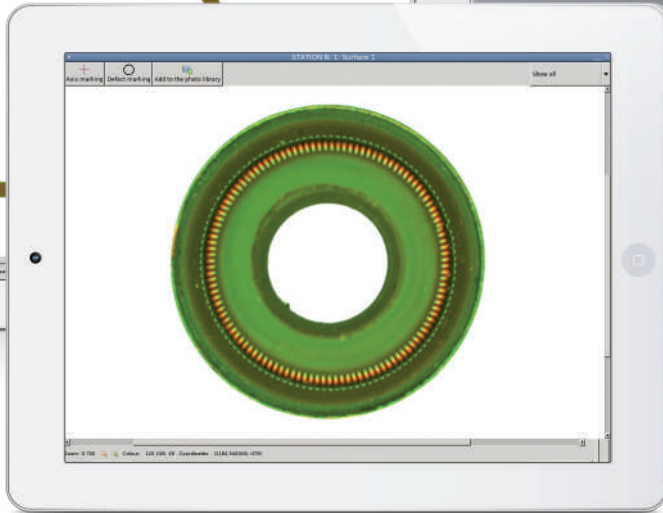
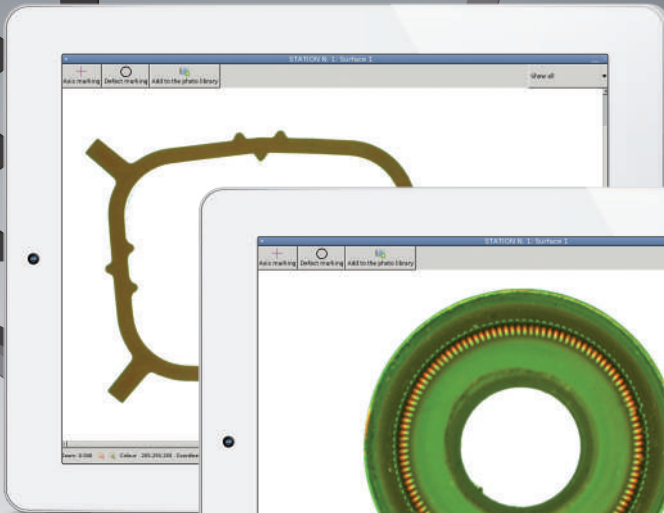


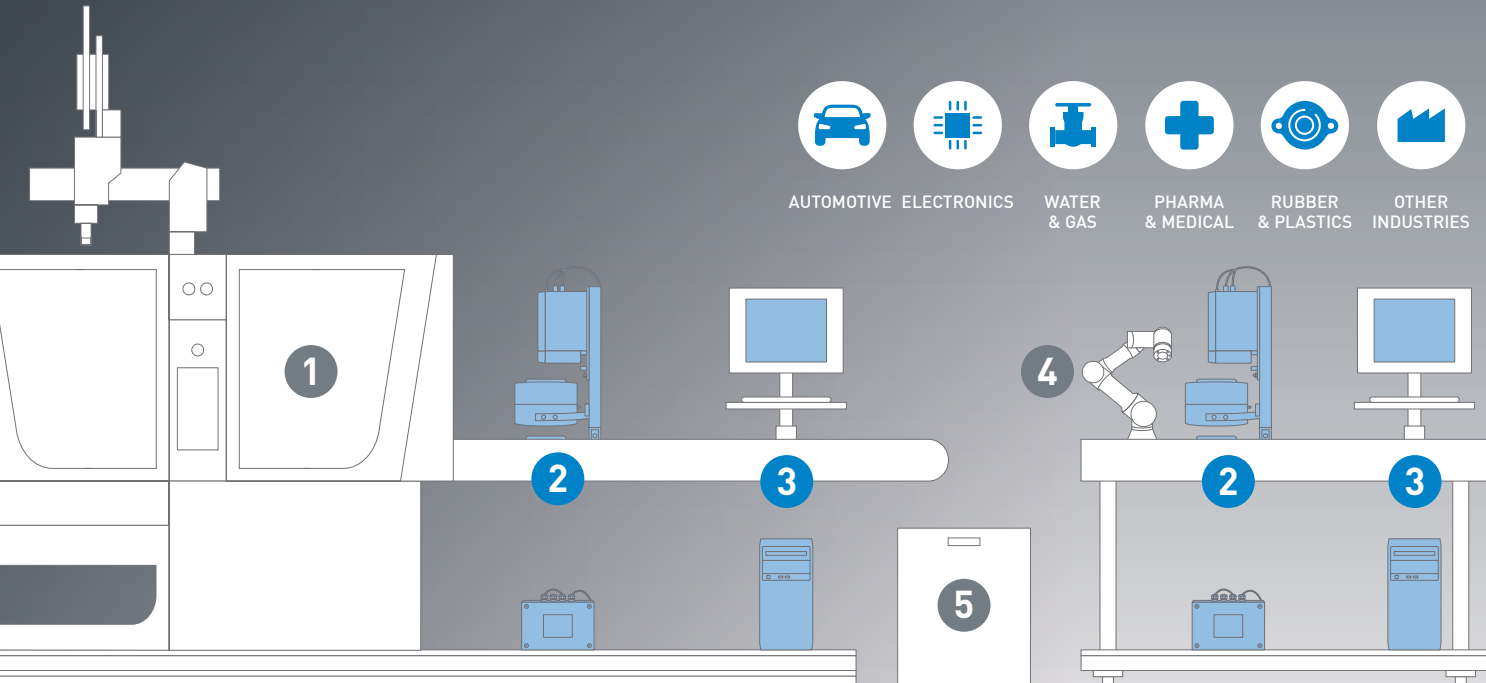


BlynX

CUSTOM-CONFIGURED VISUAL
INSPECTION SYSTEM



UTP VISION
VISUAL INSPECTION



CONFIGURATION EXAMPLES FOR HIGH PRECISION PARTS

Blynx can be supplied as a stand-alone system
or integrated directly into your production line

- 1 **PRODUCTION LINE**
- 2 **BLYNX VISUAL INSPECTION SYSTEM**
The vision module can be installed virtually anywhere thanks to the compact footprint.
- 3 **CONTROL SOFTWARE**
BlynX integrates UTPVision's proprietary inspection software. PC Included. Optional monitor available on request.
- 4 **ROBOT**
- 5 **SORTING**



LINUX



DATABASE
INTEGRATION



STATISTICS
REPORTS



COLOR VISION
PATENTED

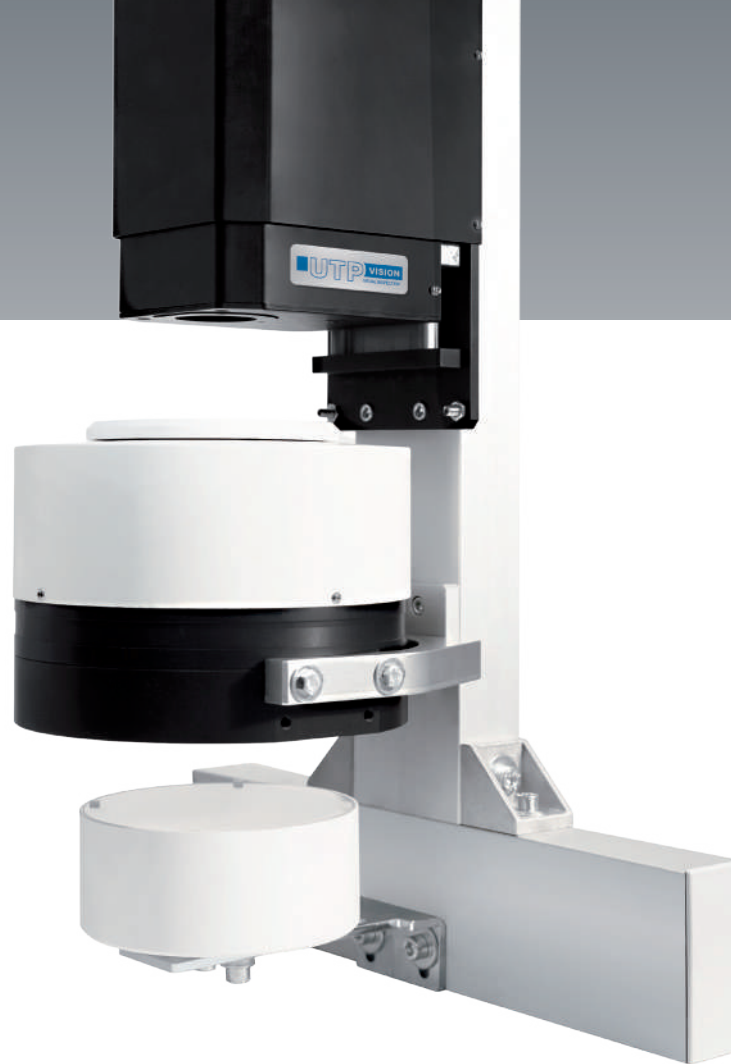


ARTIFICIAL
INTELLIGENCE

BlynX is a custom-configurable vision inspection system that can be used inline for real-time production quality monitoring or offline for statistical process control. UTPVision software is at the heart of BlynX: its cutting-edge vision algorithms that also leverage **AI tools** can quickly analyze a part and sort it based on various parameters, such as surface defects, geometrical flaws, out-of-tolerance dimensions etc.

The image on the right shows an example of a BlynX surface inspection system installed next to a machine press. BlynX can be easily configured to include various sensors for **100% part inspection**, high precision dimensional measurement and other tasks. BlynX is the result of many years of experience in machine vision technology. It can improve your productivity, ensuring consistent and reliable quality control.

UTPVision is a leading provider of vision inspection solutions with a long experience in a variety of industries worldwide. With BlynX, UTPVision can develop solutions for virtually any application, **precisely tailored to your needs**.





UTP Vision S.r.l.

via Tonale 9, 24061 Albano S.Alessandro (BG) - ITALY
+39 035 4521465 - info@utpvision.it
utpvision.com

